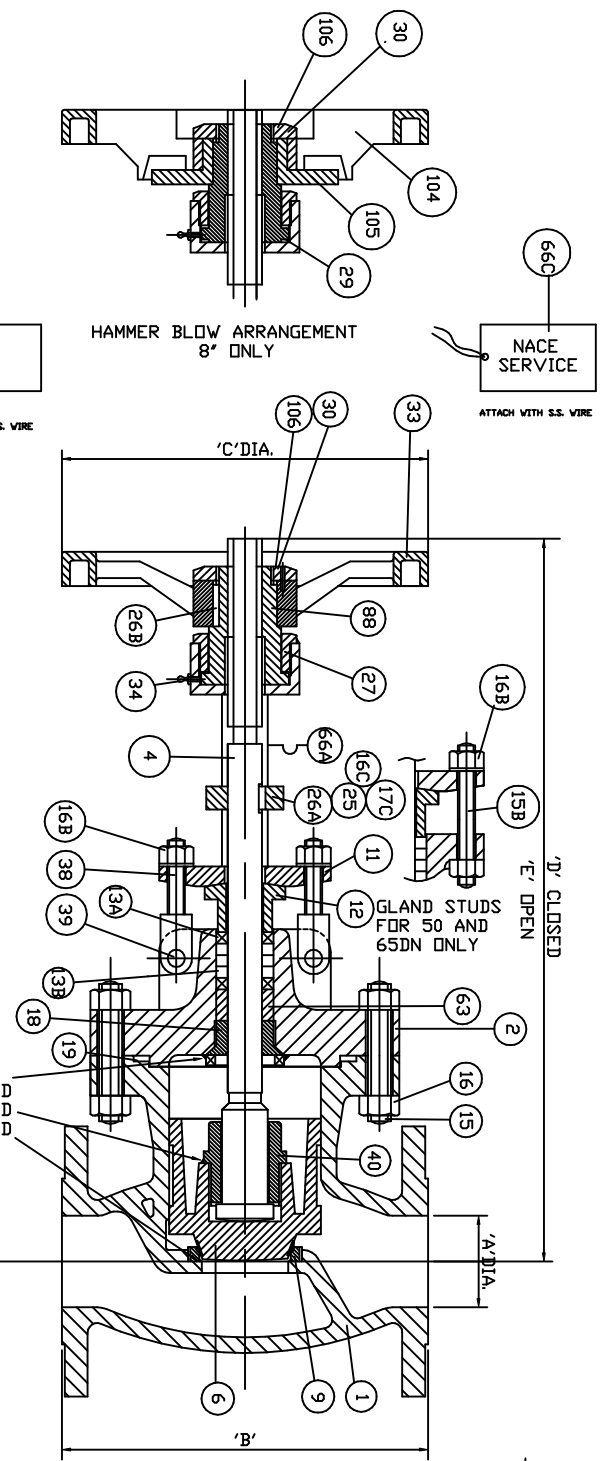


A'	B'	C'	D'	E'
50	203	203	394.2	428.0
65	216	254	400.6	434.3
80	241	254	388.6	427.2
100	292	356	443.8	491.0
150	356	610	541.3	598.4
200	495	610	579.6	648.5



- 1) VALVES DESIGNED IN ACCORDANCE WITH ASME B16.34 AND API 600 (MIN WALL TO API 600) AND BRITISH STANDARD BS 1873
- 2) VALVES MANUFACTURED TO NACE MR-01-75
- 3) DYE PENETRANT EXAMINATION OF STELLITED FACINGS IN ACCORDANCE WITH SHELL 77-302
- 4) TEMP/PRESS - 19 BAR G @38C HYDRO TEST - BDDY 29 BAR G SEAT 21 BAR G

VELAN VALVE

ITEM NO	DESCRIPTION	MATERIAL	MATERIAL SPECIFICATION	ITEM NO	DESCRIPTION	MATERIAL	MATERIAL SPECIFICATION
25	TORQUE ARM	316	ASTM A276	106	SSOR	STEEL	COMMERCIAL (GOODN ONLY)
19	GASKET	GRAPH/316L	SPIRAL WOUND	105	ANVIL	DUCTILE IRON	ASTM A536 (200DN ONLY)
18	BACKSEAT(RC22 MAX)	316L	ASTM A479 (STELL)	104	HAMMERWHEEL	DUCTILE IRON	ASTM A536 (200DN ONLY)
17C	TORQUE ARM SHCS	SS	COMMERCIAL	88	YOKE NUT	D-2C	ASTM A439 (N-RESIST)
16C	TORQUE ARM NUT	GR 8M	ASTM A194	66C	YOKE NUT	PAPER	COMMERCIAL (AL T. SS)
16B	GLAND NUT	GR 8M	ASTM A194 (60-63DN)	66B	SERVICE TAG	SS	COMMERCIAL (PTIONAL)
16	BDDY/BNNT NUT	GR 8M	ASTM A194 (RC 22 MAX)	66B	TAG PLATE	SS	COMMERCIAL
15B	GLAND STUD	GR 88M CL2	ASTM A193 (50-63DN ONLY)	66A	NAMEPLATE	SS	COMMERCIAL
15	BDDY/BNNT STUD	GR 88M CL2	ASTM A193 (RC 22 MAX)	63	PACKING SPACER	316	ASTM A276
13B	PACKING RING	GRAPH RIBBON	JC 237 (DIR EQUAL)	40	DISC UNION	316	ASTM A276
13A	PACKING RING	BRAID GRAPH	GARLDCX 1303 (DIR EQUAL)	39	EYEBOLT PIN	304	ASTM A479 (80-200DN ONLY)
12	GLAND BUSHING	316	ASTM A479	38	GLAND EYEBOLT	F316	ASTM A182
11	PACKING FLANGE	F316	ASTM A182	34	GREASE FITTING	STEEL	COMMERCIAL
9	SEAT	F316L	ASTM A182 (STELL)	33	HANDWHEEL	STST	
6	DISC (RC22 MAX)	CF8M	ASTM A182 (STELL)	30	HANDWHEEL NUT	STST	
4	STEM	CF8M	ASTM A351 (STELL)	29	BEARING	STEEL	COMMERCIAL (GOODN ONLY)
2	BNNET	CF8M	ASTM A479	27	YOKE BUSHING	316	ASTM A276
1	BDDY	CF8M	ASTM A351	26B	YOKE NUT KEY	C1040/1045	ASTM A108
		CF8M	ASTM A351	26A	TORQUE ARM KEY	316	ASTM A276

REVISIONS	ISS.	CHANGE NO. OR DESCRIPTION	DATE

REVISIONS	ISS.	CHANGE NO. OR DESCRIPTION	DATE

REMOVE ALL SHARP EDGES ALSO USED DN

IF IN DOUBT ASK DO NOT SCALE

YEAR OF FIRST PUBLICATION 2000

THIS DRAWING IS THE PROPERTY OF VALVES LTD. AND MUST NOT BE USED IN ANY WAY PREJUDICIAL TO THEIR INTERESTS

150 GLOBE VALVE

DRAWING No. 2416

ISSUE 0 A3