

DRAWING No.
2415

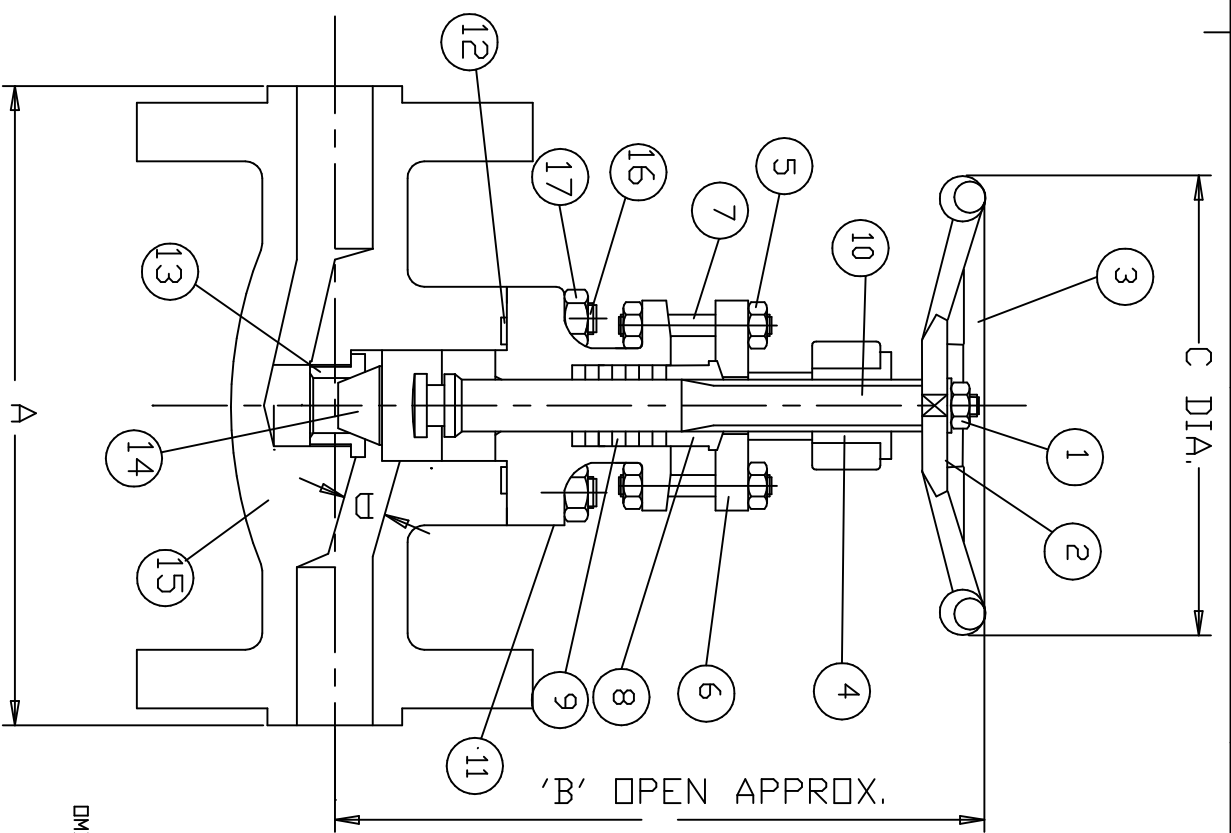
DIMENSIONS	1/2	3/4	1	1 1/2	2
END TO END A	108	118	127	165	203
OPEN HEIGHT B	180	188	220	258	270
HANDWHEEL C	90	90	110	130	180
SEAT PORT D	9	13	17.5	29.5	35
WEIGHT (approx) QTY.	Kg.	3.25	4.0	5.6	8.5
					17.5

END FLANGES TO ANSI B16.5 STANDARD,
FACE TO FACE DIMENSIONS TO ANSI B16.10

VALVES COMPLY WITH NACE MR-01-75

MATERIAL SPECIFICATION

1	WHEELNUT	ST 316
2	NAMEPLATE	ALUMINIUM
3	HANDWHEEL	ST 316
4	YDKE NUT	ASTM A582 TYPE 303
5	GLAND NUT	ASTM A194 GR.8
6	GLAND FLANGE	ASTM A182 F304
7	GLAND STUD	ASTM A193 B8
8	GLAND	ASTM A479 TYPE 304
9	PACKING	GARLDCK
10	STEM	ASTM A479 TYPE 316
11	BONNET	ASTM A182 F316
12	GASKET	316 / GRAPHITE SPIRAL WOUND
13	SEAT	ASTM A479 TYPE 316/STELL
14	DISC	ASTM A182 F316/ STELL
15	BIDDY	ASTM A182 F316
16	STUDBOLTS	ASTM A193 B8
17	STUD NUT	ASTM A194 GR 8



REMOVE ALL SHARP EDGES	ALSD USED DN	ALSD USED DN	REVISIONS		DRAWN	CJP	MACHINE WHERE INDICATED THIS V	ALL MACHINING DIMENSIONS SHOWN WITHOUT TOLERANCES TO BE MADE AS FOLLOWS:-	INCH	METRIC	TITLE
IF IN DOUBT ASK DD NOT SCALE			ISS.	CHANGE NO. OR DESCRIPTION	DATE		MAXM ROUGHNESS GRADE TO BE: (UNLESS OTHERWISE STATED)	SHAFTS: ± .000 .05 HOLES: ± .000 .05	1/16	.25	SCH. CLASS 150 GLOBE VALVE
YEAR OF FIRST PUBLICATION 2000							ALL OTHER DIMENSIONS: ± .010 .25				DRAWING No. 2415
											ISSUE 0
											A3

THIS DRAWING IS THE PROPERTY OF
VALVES LTD.
AND MUST NOT BE USED IN ANY WAY
PREJUDICIAL TO THEIR INTERESTS