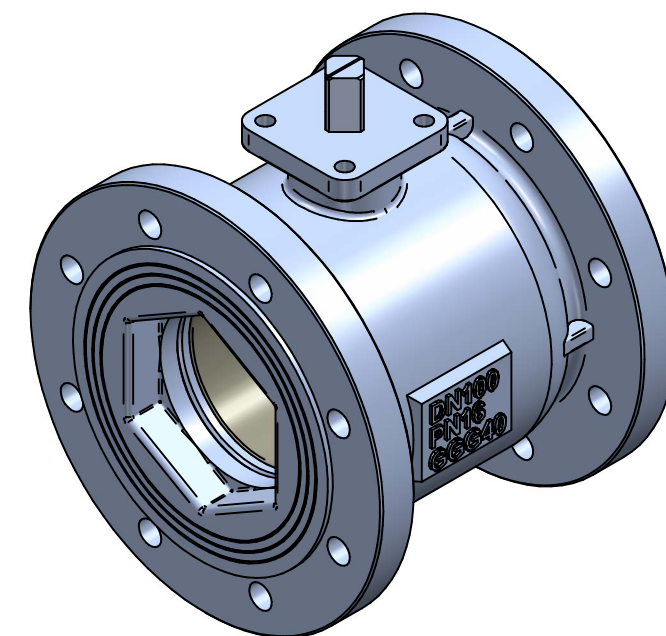
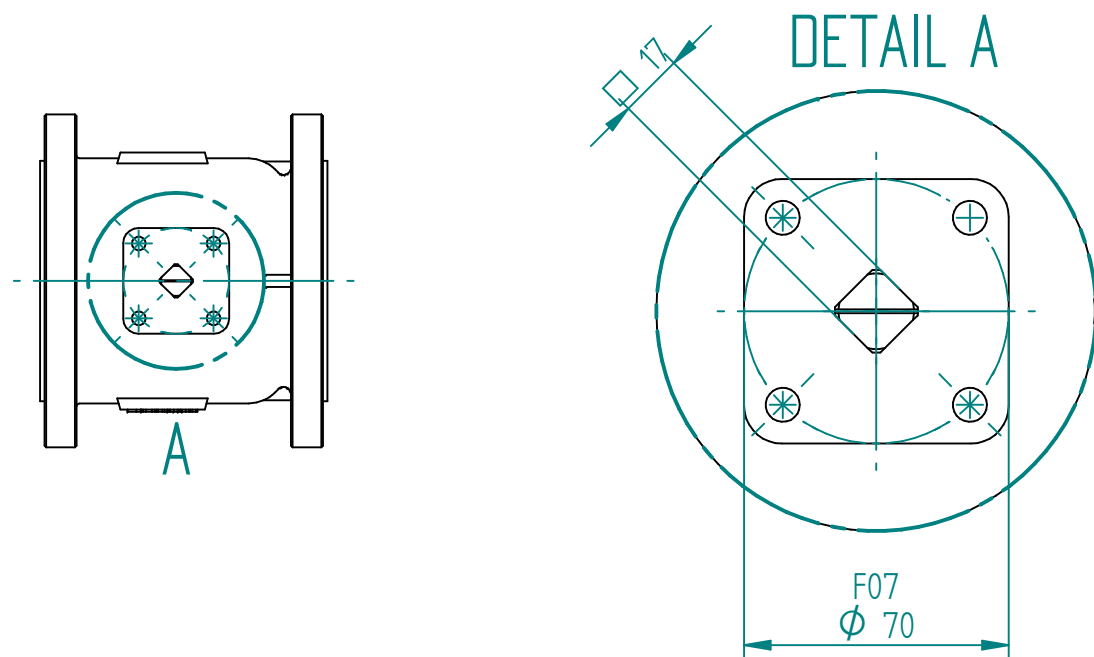


Pos	Part name	Material
1	Body	Ductile Iron (GGG40)
2	Bonnet	Ductile Iron (GGG40)
3	Ball	SS304
4	STEM	SS304
5	Seat	PTFE
6	Stem washer	PTFE
7	Gasket	PTFE
8	O-ring	Viton

Flanges according to NS2527

Ball Valve Flow CV and KV												
DN100	V-Port Angle	0% 0°	10% 9°	20% 18°	30% 27°	40% 36°	50% 45°	60% 54°	70% 63°	80% 72°	90% 81°	100% 90°
KV	90°	0.0	0.0	6.2	13.1	33.5	61.3	105.1	160.6	243.8	364.9	554.6
CV	90°	0	0	7.2	15.2	38.9	71.1	121.9	186.3	282.8	423.3	643.4



TITLE BALL VALVE V-PORT 90DEG DN100 PN16 GGG40/304/304/PTFE F07 SQR19X25 DFQ41F-16Q 140Nm

	NAME	DATE	SIZE	DWG NO
DRAWN	RAGA	11/2/2023	A3	YON-100-DFQV90-0100
CHECKED	TOCO	dd.mm.yyyy	FILE NAME: YON-100-DFQV90-0100-REV02.dft	
ENG APPR	TOCO	dd.mm.yyyy	SCALE: 1:5	REV: 02
MGR APPR	TOCO	dd.mm.yyyy	WEIGHT: 22.5kg	SHEET: 1 OF 1

UNLESS OTHERWISE SPECIFIED DIMENSIONS ARE IN MILLIMETERS AND TOLERANCES ARE +/-0,5

REV	DESCRIPTION	DATE	APPROVED
02	Corrected Stem Dimension	02.11.2023	RAGA
01	Added CV/KV, MAST and Ball dimensions.	24.10.2023	RAGA
00	ISSUED	20.10.2023	RAGA

REVISION HISTORY