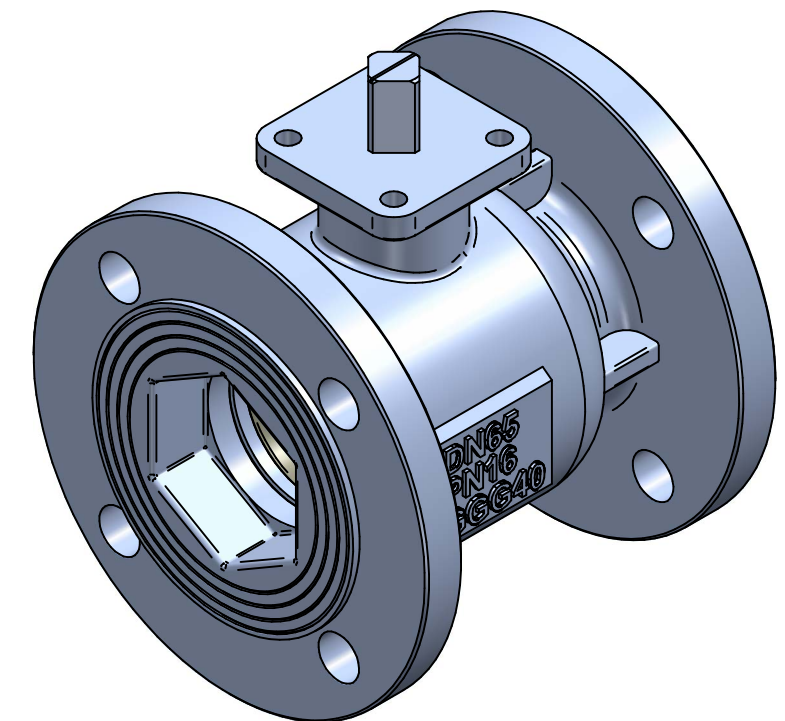
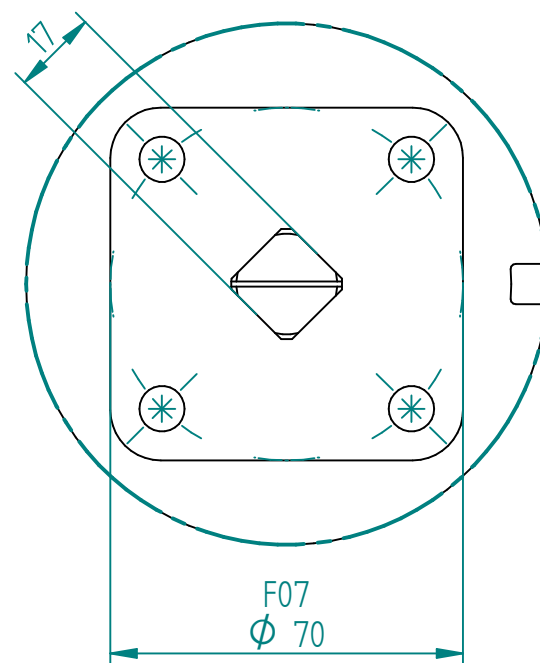
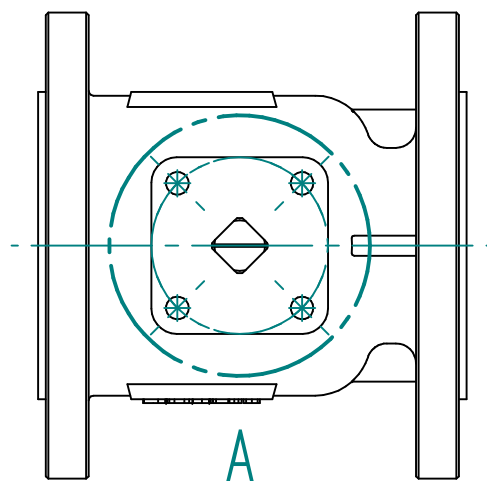


Pos	Part name	Material
1	Body	Ductile Iron (GGG40)
2	Bonnet	Ductile Iron (GGG40)
3	Ball	SS304
4	STEM	SS304
5	Seat	PTFE
6	Stem washer	PTFE
7	Gasket	PTFE
8	O-ring	Viton

Flanges according to NS2527

Ball Valve Flow CV and KV												
DN65	V-Port Angle	0% 0°	10% 9°	20% 18°	30% 27°	40% 36°	50% 45°	60% 54°	70% 63°	80% 72°	90% 81°	100% 90°
KV	90°	0.0	0.0	1.6	6.3	14.2	26.9	46.1	67.1	75.0	152.8	207.0
CV	90°	0	0	1.9	7.3	16.5	31.2	53.5	77.9	87	177.3	240.1

DETAIL A



TITLE BALL VALVE V-PORT 90DEG DN65 PN16 GGG40/304/304/PTFE F07 SQR17X25 Dfq41F-16Q 65Nm

	NAME	DATE	SIZE	DWG NO
DRAWN	RAGA	10/25/2023	A3	YON-100-DFQV90-0065
CHECKED	TOCO	dd.mm.yyyy	FILE NAME: YON-100-DFQV90-0065-REV02.dft	
ENG APPR	TOCO	dd.mm.yyyy	SCALE: 1:3	REV: 02
MGR APPR	TOCO	dd.mm.yyyy	WEIGHT: 13kg	SHEET: 1 OF 1

UNLESS OTHERWISE SPECIFIED DIMENSIONS ARE IN MILLIMETERS AND TOLERANCES ARE +/-0,5

REV	DESCRIPTION	DATE	APPROVED
02	Corrected Stem Dimension	25.10.2023	RAGA
01	Added CV/KV, MAST and Ball dimensions.	24.10.2023	RAGA
00	ISSUED	20.10.2023	RAGA

REVISION HISTORY