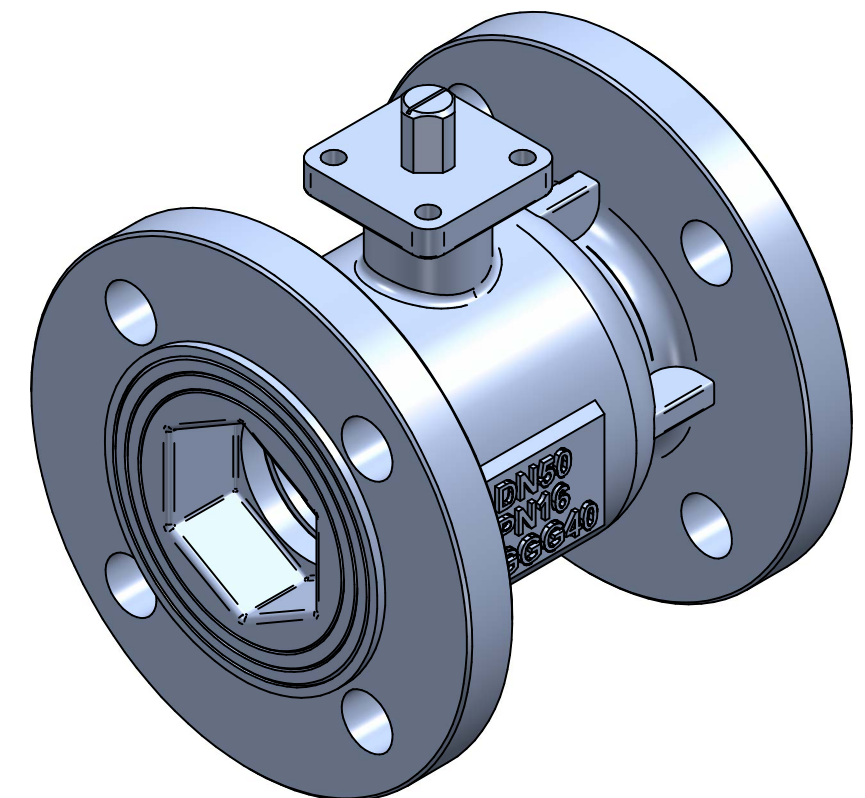
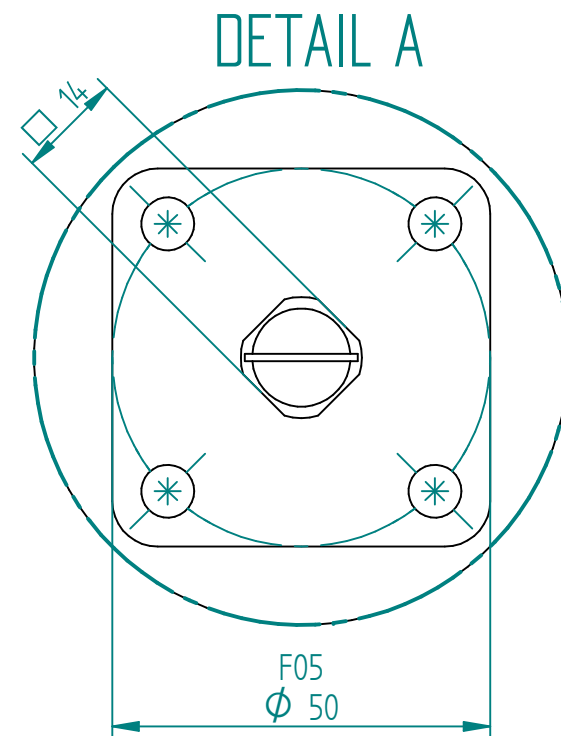
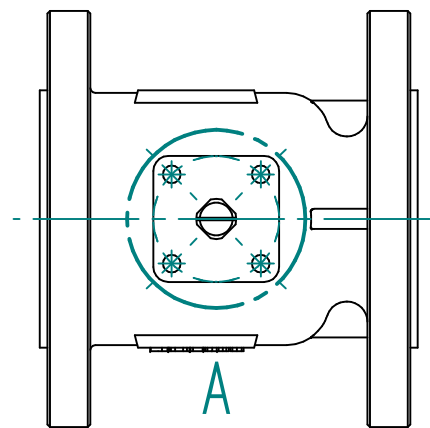


Pos	Part name	Material
1	Body	Ductile Iron (GGG40)
2	Bonnet	Ductile Iron (GGG40)
3	Ball	SS304
4	STEM	SS304
5	Seat	PTFE
6	Stem washer	PTFE
7	Gasket	PTFE
8	O-ring	Viton

Flanges according to NS2527

DN50	V-Port Angle	0% 0°	10% 9°	20% 18°	30% 27°	40% 36°	50% 45°	60% 54°	70% 63°	80% 72°	90% 81°	100% 90°
KV	90°	0.0	0.0	1.2	6.2	11.7	21.9	36.5	47.9	75.0	111.9	144.2
CV	90°	0	0	1.4	7.2	13.6	25.4	42.3	55.6	87	129.8	167.3



		NAME	DATE	SIZE	DWG NO
DRAWN	RAGA	10/24/2023	A3	YON-100-DFQV90-0050	
CHECKED	TOCO	dd.mm.yyyy	FILE NAME: YON-100-DFQV90-0050-REV01.dft		
ENG APPR	TOCO	dd.mm.yyyy	SCALE: 1:3	REV: 01	
MGR APPR	TOCO	dd.mm.yyyy	WEIGHT: 9kg	SHEET: 1 OF 1	

UNLESS OTHERWISE SPECIFIED DIMENSIONS ARE IN MILLIMETERS AND TOLERANCES ARE +/-0,5

REV	DESCRIPTION	DATE	APPROVED
01	Added CV/KV, MAST and Ball dimensions.	24.10.2023	RAGA
00	ISSUED	20.10.2023	RAGA

REVISION HISTORY

TITLE BALL VALVE V-PORT 90DEG DN50 PN16 GGG40/304/304/PTFE F05 SQR14X19 DFQ41F-16Q 45Nm