

PRODUCT NAME

Valve Monitor

MODEL NO.

ALS210M2

DESCRIPTION OF THE PRODUCT

The ALS210M2 series valve monitor is a rotary position indication device. Armed with mechanical switch this device can sense mechanical position (on/off) of valve for remote PLC or PC indication. The visual indicator on the top of the device can also clearly display the valve position for local detection.



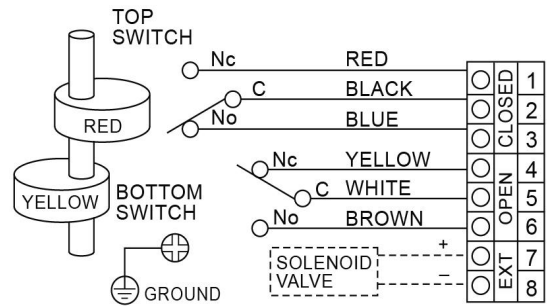
SPECIFICATIONS AND TECHNICAL DATA

| | |
|-------------------------|---|
| Enclosure | Aluminium die casting |
| O-rings | NBR |
| Environment | IP67 (Optional: IP68) |
| Fasteners | Stainless steel |
| Shaft | Stainless steel Namur |
| Conduit Entries | 2 - M20x1.5 |
| | Optional: 2 - 1/2"NPT , 2 - G1/2" |
| Terminal Strip Contacts | 8 |
| Ambient Temperature | -20°C -80°C |
| Mounting Bracket | 30 x 80, 130 H:20, 30 (Stainless Steel) |

Mechanical Switches Approved By

UL, CSA, SEMKO, SEV, EN61058-1

WIRING DIAGRAM



Sensor: Mechanical Switches

| | |
|-------------------|----------------------|
| Model No. | Omron micro switches |
| Operating Voltage | 15A , 125VAC~250VAC |

DRAWING AND DIMENSION (mm)

