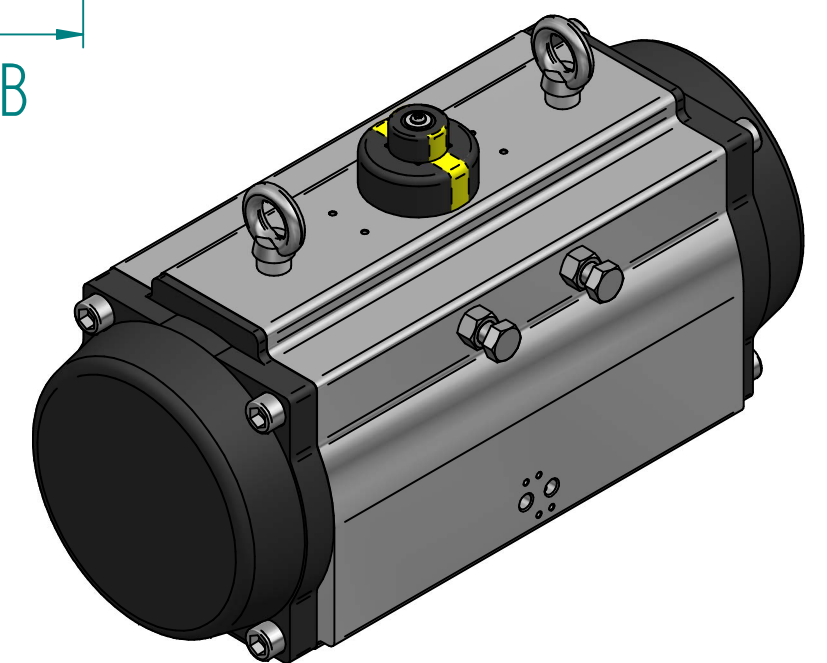
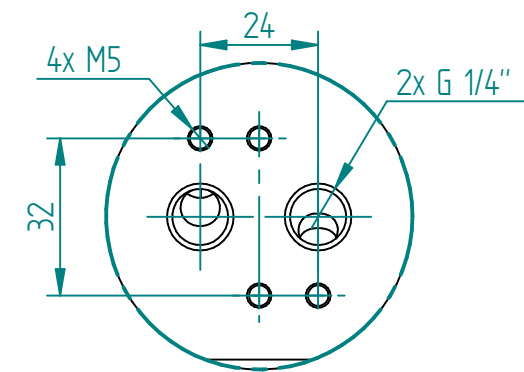


Pos	Part name	Material
1	Indicator bolt	304
2	Indicator	ABS/304
3	Circlip	304
4	Thrust washer	304
5	Outside washer	POM
6	Body	Alu 6005-T5
7	Piston guide	POM
8	O-ring (pinion top)	NBR
9	Bearing (pinion top)	POM
10	Inside wahser	POM
11	Cam	Steel #45
12	Pinion	Steel #45
13	Bearing (pinion bottom)	POM
14	O-ring (pinion bottom)	NBR
15	Spring	Spring steel
16	Bearing (piston)	POM
17	O-ring (piston)	NBR
18	Piston	Alu A380
19	Plug	NBR
20	O-ring (adjustment srew)	NBR
21	Nut (adjustment screw)	304
22	Adjustin screw	304
23	Stop bolt	304
24	Stop nut	304
25	O-ring (end cap)	NBR
26	End-cap	Alu A380
27	End-cap screw	304

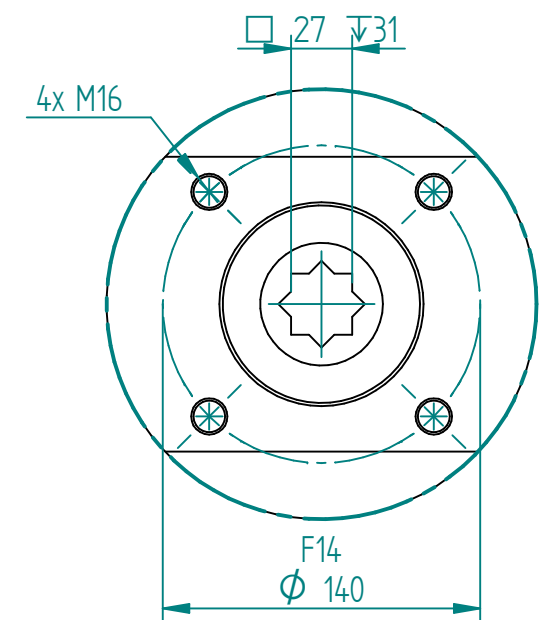
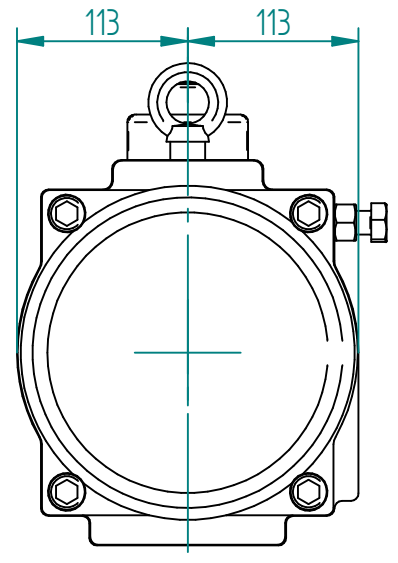
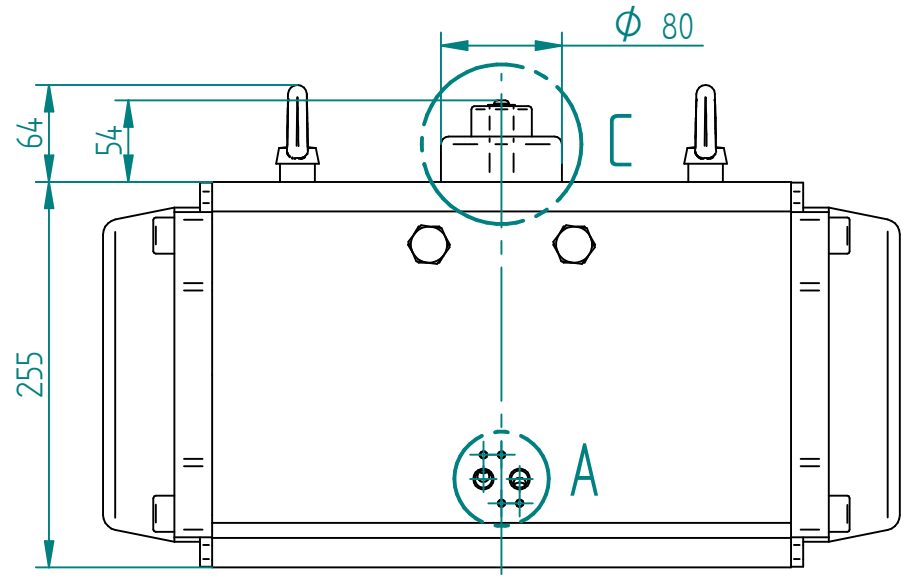
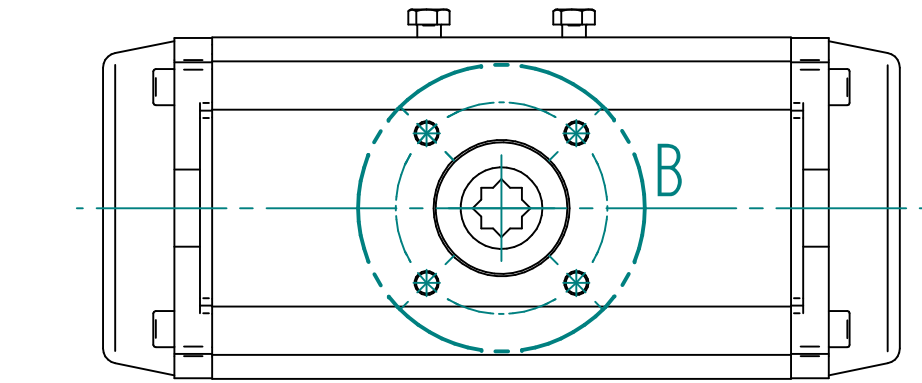
WWF / Venus spring return actuator



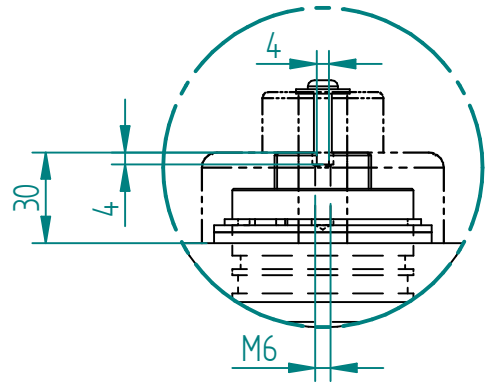
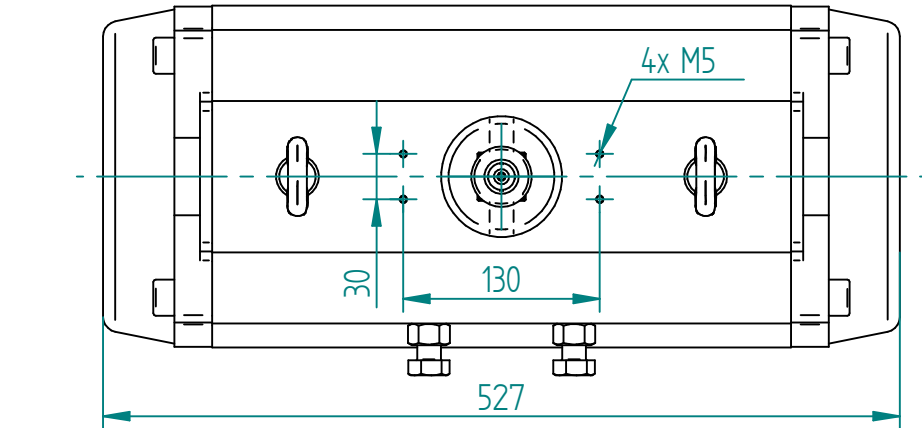
NAMUR 1/4"



DETAIL A



DETAIL B



DETAIL C



TITLE VENUS 210 ACTUATOR SR F14-SQ27X31 BODY: ALU, NBR (-20 TIL 80°C) HARD ANODIZED, 660NM @ 6BARG	NAME EMLA	DATE 16.05.2024	SIZE A3	DWG NO WWF-03VE210SR27	UNLESS OTHERWISE SPECIFIED DIMENSIONS ARE IN MILLIMETERS AND TOLERANCES ARE +/-0,5
	CHECKED EMLA	16.05.2024	FILE NAME: WWF-03VE210SR27.dft		
	ENG APPR		SCALE: 1:5	REV: 00	
	MGR APPR		WEIGHT: 53.2 kg	SHEET: 1 OF 1	

REV	DESCRIPTION	DATE	APPROVED
00	ISSUED	11.07.2024	EMLA
REVISION HISTORY			