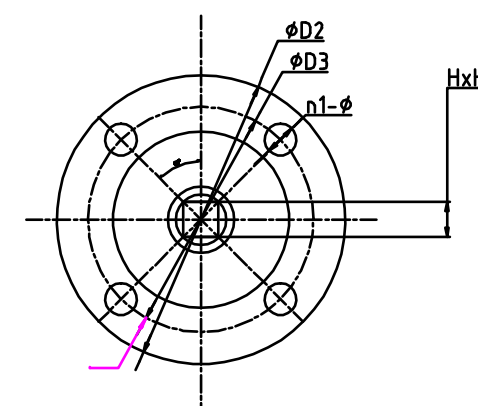


SIZE	A	B	ø2	L	HxH	ISO5211	D2	D3	n1-ø
DN50	140	75	12.6	43	9x9	F07	90	70	4-10
DN65	150	82	12.6	46	9x9	F07	90	70	4-10
DN80	160	90	12.6	46	9x9	F07	90	70	4-10
DN100	178	118	15.77	52	11x11	F07	90	70	4-10
DN125	190	131	18.92	56	14x14	F07	90	70	4-10
DN150	200	145	18.92	56	14x14	F07	90	70	4-10
DN200	240	173	22.1	60	17x17	F10	125	102	4-12



SIZE	D1	n-M	&
DN50	125	4-M16	90
DN65	145	4-M16	90
DN80	160	8-M16	45
DN100	180	8-M16	45
DN125	210	8-M16	45
DN150	240	8-M20	45
DN200	295	8-M20	45

10	Bolt	SS316	2	
9	Bushing	PIPE	1	
8	Pressing Sleeve	Stainless Steel	2	
7	Seat Energizer	Silicone	2	
6	Up Shaft	SS431	1	
5	Disc	PIPE+WCB	1	
4	Butterfly Spring	Spring Steel	8	
3	Seat	PIPE	1	
2	Down Shaft	SS431	1	
1	Body	GG40	2	
NO.	NAME	MATERIAL	QTY	
TEST PRESSURE	CWP:10Bar	SHELL	SEAL	
	HYDROSTATIC	15 bar		
	AIR		6 bar	
STAND-ARD	DESIGN CODE	EN593		
	INSPECTION & TEST	EN12266-1		
	END STANDARD	EN1092-2 PN10		
	FACE TO FACE	EN558-1		
TITLE: LUG BUTTERFLY VALVE DN50-DN200				
APPROVED		DWG NO.		REV
CHECKED				
DRAWN				
DESIGNED		SCALE	UNIT	mm

		NAME	DATE	SIZE	DWG NO	UNLESS OTHERWISE SPECIFIED DIMENSIONS ARE IN MILLIMETERS AND TOLERANCES ARE +/-0,5			
	DRAWN	MOTO	dd.mm.yyyy	A3	WOD-110-003-DN50-DN200				
	CHECKED	TOCO	dd.mm.yyyy	FILE NAME: WOD-110-003-DN50-DN200.pdf					
	ENG APPR	TOCO	dd.mm.yyyy	SCALE:	REV:				
MGR APPR	TOCO	dd.mm.yyyy	WEIGHT:	SHEET: 1 OF 1					
TITLE	LUG BUTTERFLY VALVE PN 10 DN50-DN200								
	REV	DESCRIPTION	DATE	APPROVED	REVISION HISTORY				