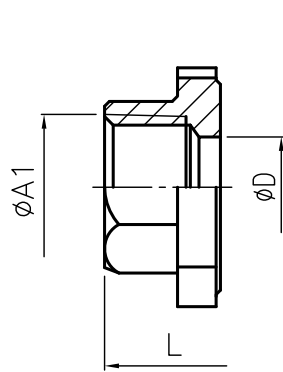


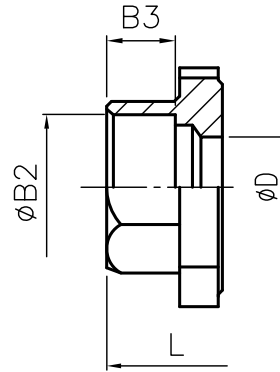
# Series S600

## 3-PIECE FULL BORE BALL VALVE



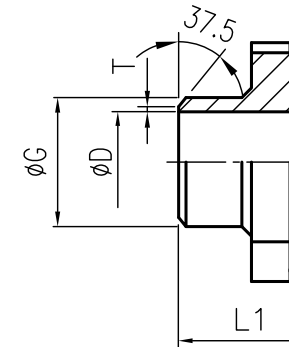
THREADED END

Series S600-10/1F



SOCKET WELD  
END

Series S600-20/2F



BUTT WELD  
END

Series S600-30/3F

### DIMENSIONS(mm)

SIZE	øA1	øB2	B3	øD	L	L1	øG	T
1/4"	NPT PT DIN259 DIN2999 ISO228 BSP ANSI 74 EN 76.9	14.3	10	11.5	75	75	21.7	2.35
3/8"		17.6	10	12.6	75	75	21.7	2.8
1/2"		21.9	10	15	72.5	75	21.7	1.6
3/4"		27.3	13	20	85.4	90	27.2	1.6
1"		33.9	13	25	105.3	110	34	1.6
1 1/4"		42.8	13	32	111	115	42.7	1.6
1 1/2"		48.9	13	38	127.3	130	48.6	1.6
2"		61.3	16	50	142.8	142.8	60.5	1.6
2 1/2"		76.9	16	65	185	185	76.3	2
3"		90	16	80	205	205	90	2
4"	115.5	20	100	240	240	116	3.5	



✉ post@jsc.no | 🏠 www.jsc.no

DRAWING NAME	DRAWING NO.	VERSION	UNIT	SCALE				
3-PIECE FULL BORE BALL VALVE	JSCO231225010	0	mm	1:1				
DESCRIPTION			PROJECTION					
Series S600			NO.	REV. NO.	REVISION	NAME	DATE	