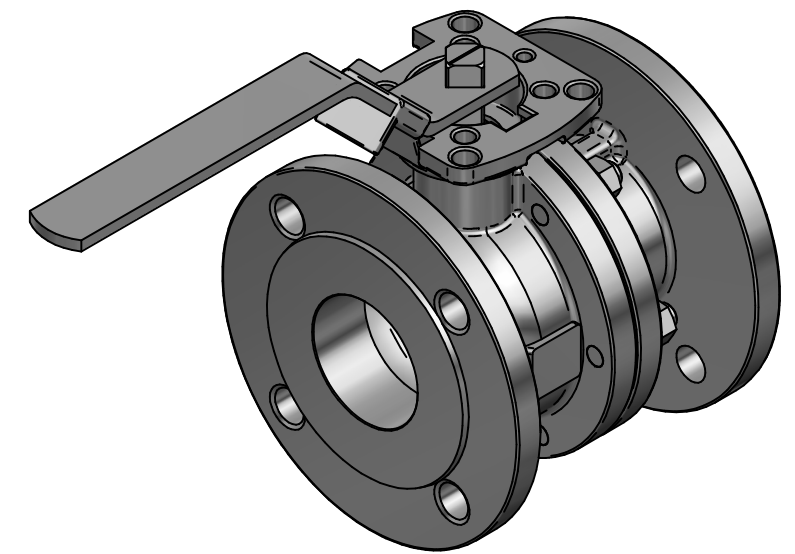


DETAIL A

Pos	Part name	Material	QTY
1	Body	1.4408	1
2	End Cap	1.4408	1
3	Ball	1.4408	1
4	Seat	TFM1600	2
5	Joint Gasket	SS316 with Graphite	1
6	Stem	SS316	1
7	Thrust Washer	RTFE	1
8	Gland Packing	Graphite	1
9	Gland Packing	Glass Fiber Filled	1
10	Gland bushing	SS316	1
11	Belleville Washer	SS301	2
12	Stop Washer	SS316	1
13	Stem Nut	SS316	1
14	Stem Washer	SS316	1
15	Handle	SS316	1
14	Handle Cover	Vinyl	1
15	Bolt	SS316	6
16	Bolt Nut	SS316	6
17	Stop Pin	SS316	1
18	Pin Nut	SS316	1
19	Locking Device	SS316	1
20	O-Ring	Viton	1
21	Washer	SS316	1
22	Anti-static Device	SS316	2

KV	Torque (RPTFE)
595 [m ³ /h]	58 nm



DRAWN	NAME	DATE	SIZE	DWG NO
	EMLA	15.01.2024	A3	TRW-100-F502-4F-065
CHECKED	EMLA	15.01.2024	FILE NAME: TRW-100-F502-4F-065.dft	
ENG APPR	TOCO	dd.mm.yyyy	SCALE: 1:3	REV: 00
MGR APPR	TOCO	dd.mm.yyyy	WEIGHT: 14.67 kg	SHEET: 1 OF 1

UNLESS OTHERWISE SPECIFIED DIMENSIONS ARE IN MILLIMETERS AND TOLERANCES ARE +/-0,5

REV	DESCRIPTION	DATE	APPROVED
00	ISSUED	07.02.2024	JOB
REVISION HISTORY			

TITLE 2PC BALL VALVE F502-4F PN16 DN65 FLANGED, F-BORE FLOATING CF8M/CF8M/TFM F07/F10 SQ17, FIRESAFE ATEX-IIC W/HANDLE MAR90D-4F