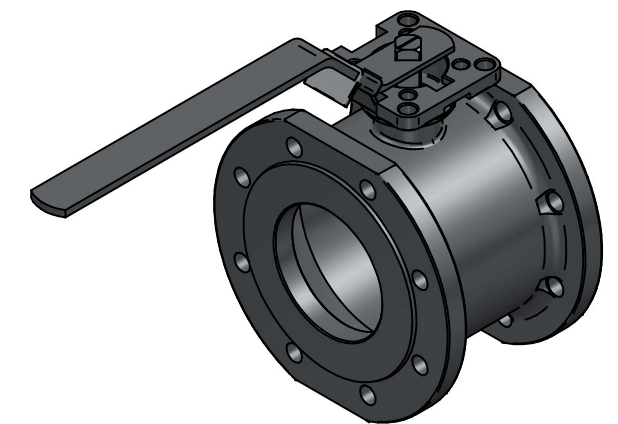


DETAIL A

Pos	Part name	Material	QTY
1	Body	1.4408	1
2	End cap	1.4408	1
3	Ball	1.4408	1
4	Seat	TFM1600	2
5	Joint gasket	Graphite	1
6	Thrust Washer	RTFE	1
7	Stem	SS316	1
8	Gland Packing	Graphite	1
9	Gland Packing	Glass fiber filled PTFE	1
10	Gland Bush	SS316	1
11	Bellewille Washer	SS301	2
12	Stop Washer	SS316	1
13	Stem Nut	SS316	2
14	Stem Washer	SS316	1
15	Handle	SS316	1
16	Locking Device	SS316	1
17	Handle Cover	PLASTIC	1
18	Stop Pin	SS316	1
19	Pin Nut	SS316	1
20	O-Ring	VITON	1
21	Washer	SS316	1
22	Anti-static Device	SS316	2

F301-1F DN100

KV	Torque (RPTFE)
1730 m ³ /h	90 nm



DRAWN	NAME	DATE	SIZE	DWG NO
	EMLA	26.02.2024	A3	TRW-100-F301-1F-100
CHECKED	EMLA	26.02.2024	FILE NAME: TRW-100-F301-1F-100.dft	
ENG APPR	TOCO	dd.mm.yyyy	SCALE: 1:4	REV: 00
MGR APPR	TOCO	dd.mm.yyyy	WEIGHT: 20.38 kg	SHEET: 1 OF 1

UNLESS OTHERWISE SPECIFIED DIMENSIONS ARE IN MILLIMETERS AND TOLERANCES ARE +/-0,5

REV	DESCRIPTION	DATE	APPROVED
00	ISSUED	07.02.2024	EMLA
REVISION HISTORY			

TITLE 2PC BALL VALVE F301-1F DN100 PN16 COMPACT F-BORE FLOATING CF8M/CF8M/TFM F07/10 SQ17 FIRESAFE DESIGN W/HANDLE MAR99-1F