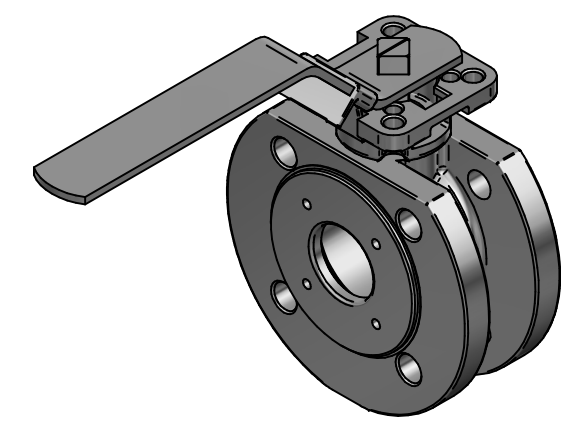


Pos	Part name	Material	QTY
1	Body	1.4408	1
2	End cap	1.4408	1
3	Ball	SS316 *	1
4	Seat	TFM1600	2
5	Joint gasket	GRAPHITE	1
6	Joint gasket	PTFE	1
7	Thrust Washer	RTFE	1
8	Stem	SS316	1
9	Gland Packing	GRAPHITE	2
10	Gland Packing	Glass fiber filled PTFE	1
11	Gland Bush	SS316	1
12	Belleville Washer	SS301	2
13	Stop Washer	SS316	1
14	Stem Nut	SS316	2
15	Stem Washer	SS316	1
16	Handle	SS316	1
17	Locking Device	SS316	1
18	Handle Cover	PLASTIC	2
19	Stop Pin	SS316	1
20	Pin Nut	SS316	1
21	O-ring	VITON	1
22	Washer	SS316	1
23	Anti-static device	SS316	2

F301-1F DN15-DN80
 * 3/4", 1-1/2", 2" ~ SS316
 1/2", 1", 1-1/4", 2-1/2", 3" ~ 1.4408

KV	Torque (RPTFE)
216 m ³ /h	29 nm



	NAME	EMLA	DATE	07.02.2024	SIZE	A3	DWG NO	TRW-100-F301-1F-040	UNLESS OTHERWISE SPECIFIED DIMENSIONS ARE IN MILLIMETERS AND TOLERANCES ARE +/-0,5
	DRAWN	EMLA	07.02.2024	FILE NAME:	TRW-100-F301-1F-040.dft				
	CHECKED	EMLA	07.02.2024	SCALE:	1:2	REV:	00		
	ENG APPR	TOCO	dd.mm.yyyy	WEIGHT:	5.25 kg	SHEET:	1 OF 1		
MGR APPR	TOCO	dd.mm.yyyy							

REV	DESCRIPTION	DATE	APPROVED
00	ISSUED	07.02.2024	JOB
REVISION HISTORY			

TITLE 2PC BALL VALVE F301-1F DN40 PN16 COMPACT F-BORE FLOATING CF8M/CF8M/TFM F05/07 SQ14 FIRESAFE DESIGN W/HANDLE MAR99-1F