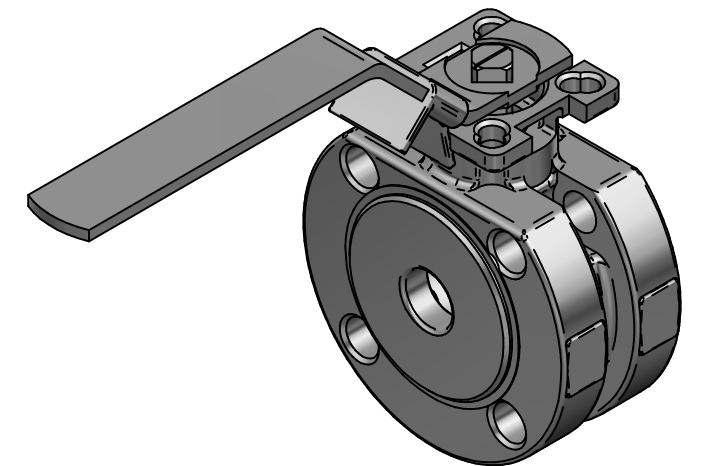


DETAIL A

Pos	Part name	Material	QTY
1	Body	1.4408	1
2	End cap	1.4408	1
3	Ball	1.4408 *	1
4	Seat	TFM1600	2
5	Joint gasket	GRAPHITE	1
6	Joint gasket	PTFE	1
7	Thrust Washer	RTFE	1
8	Stem	SS316	1
9	Gland Packing	GRAPHITE	2
10	Gland Packing	Glass fiber filled PTFE	1
11	Gland Bush	SS316	1
12	Belleville Washer	SS301	2
13	Stop Washer	SS316	1
14	Stem Nut	SS316	2
15	Stem Washer	SS316	1
16	Handle	SS316	1
17	Locking Device	SS316	1
18	Handle Cover	PLASTIC	2
19	Stop Pin	SS316	1
20	Pin Nut	SS316	1
21	O-ring	VITON	1
22	Washer	SS316	1
23	Anti-static device	SS316	2

F301-1F DN15-DN80  
 \* 3/4", 1-1/2", 2" ~ SS316  
 1/2", 1", 1-1/4", 2-1/2", 3" ~ 1.4408

KV	Torque (RPTFE)
13 m <sup>3</sup> /h	5 nm



DRAWN	NAME	DATE	SIZE	DWG NO	
				EMLA	23.01.2024
CHECKED	EMLA	23.01.2024	FILE NAME: TRW-100-F301-1F-015.dft		
ENG APPR	TOCO	dd.mm.yyyy	SCALE: 1:2	REV: 00	
MGR APPR	TOCO	dd.mm.yyyy	WEIGHT: 1.3 kg	SHEET: 1 OF 1	

UNLESS OTHERWISE SPECIFIED DIMENSIONS ARE IN MILLIMETERS AND TOLERANCES ARE +/-0,5

REV	DESCRIPTION	DATE	APPROVED
00	ISSUED	07.02.2024	JOB
REVISION HISTORY			

TITLE 2PC BALL VALVE F301-1F DN15 PN16 COMPACT F-BORE FLOATING CF8M/CF8M/TFM F03/04 SQ9 FIRESAFE DESIGN W/HANDLE MAR99-1F