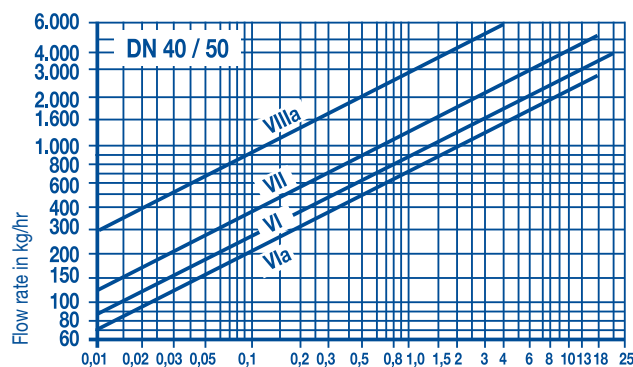
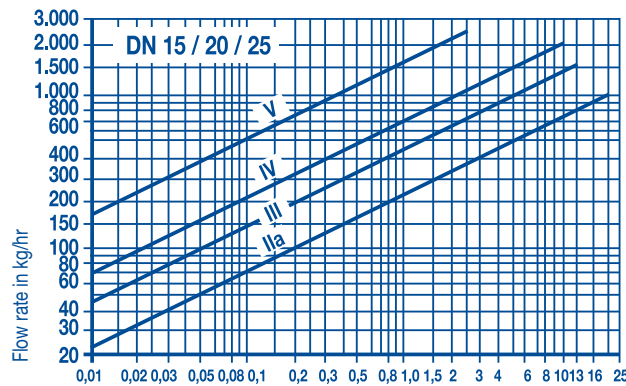


**Flow directions**

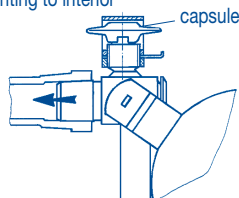


**Performance**



For the cold condensate the flow rate is higher because of medium temperature and density.

**RIFOKa-automatical venting:** For start-up and permanent venting with high venting capacity. An special liquid inside the membrane capsule evaporates and condenses only a few degrees below the boiling point of water.



**Housing-Material:** EN-JS 1049

**Connections/Dimensions:** Flange DN 15/20/25/40/50, connecting dimensions according to EN 1092-2. End to end dimensions acc. DIN 3548, LK. Dimensions acc. ANSI, on request.

**Nominal pressure stage:** PN 25

**Operation-Limits:**

Operating pressure, executive pressure in bar	25	23	20
Operating temperature, °C	-10/120	200	300

**Media:** Steam, air, gases on request.

**Function:** Increasing level opens and decreasing level closes the outlet without delay, independent of pressure and temperature fluctuations. The rotary slide valve is both swivel joint and shut-off device.

**Special characteristics:** A float-controlled trap for all flow directions and face to face length to DIN 3548, short series. The RIFOmat-Vario will be assembled as specified by customer. A change of flow direction can be accomplished in situ by merely rotating the housing flange and repositioning the float control unit.

**Installation:** Vertical or horizontal direction of flow (type WR, WI, SO, SU) as per illustrations.

**Additional equipment against extra price:**

- RIFOKa start up and permanent venting to interior
- Gastight under-level control unit
- Vent jet (interior)
- Reflective water level sight glass (RWG) up to 243°C.
- Drain plug
- Blow off valve for contaminants instead drain plug
- Check valve in outlet flange
- Bottom control valve to check min. condensate level
- Top control valve instead control screw
- Float control assembly for special applications (gases)

**Function-limit:**

Float-control cross section	inlet pressure bar g	
	Steam	Compressed air
II a	22	25
III	13	15
IV	11	14
V	2,5	3
VI	17	24
VI a	20	25
VII	16	23
VIII a	4	5

**Please state the following when making inquiries / placing orders:**

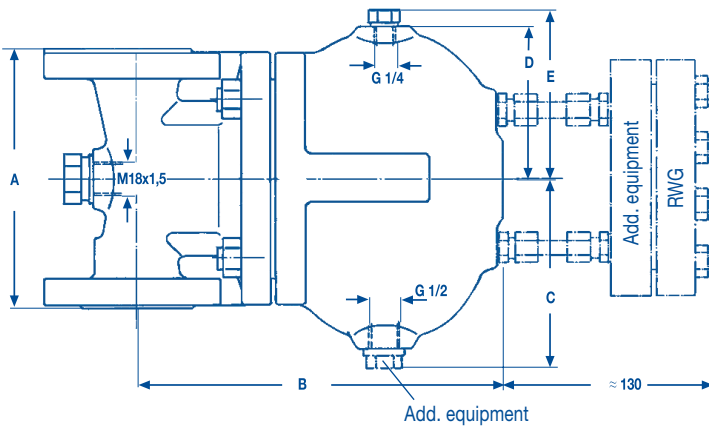
Medium, density, initial pressure, counter pressure, temperature, quantity of condensation (kg/h).

**CE - Mark**

The pressure equipment described is a pressure-keeping component in accordance with the Pressure Vessel Directive 97/23/EC.

**DN15-25:** acc. art. 3, sub. 3, no CE-mark.

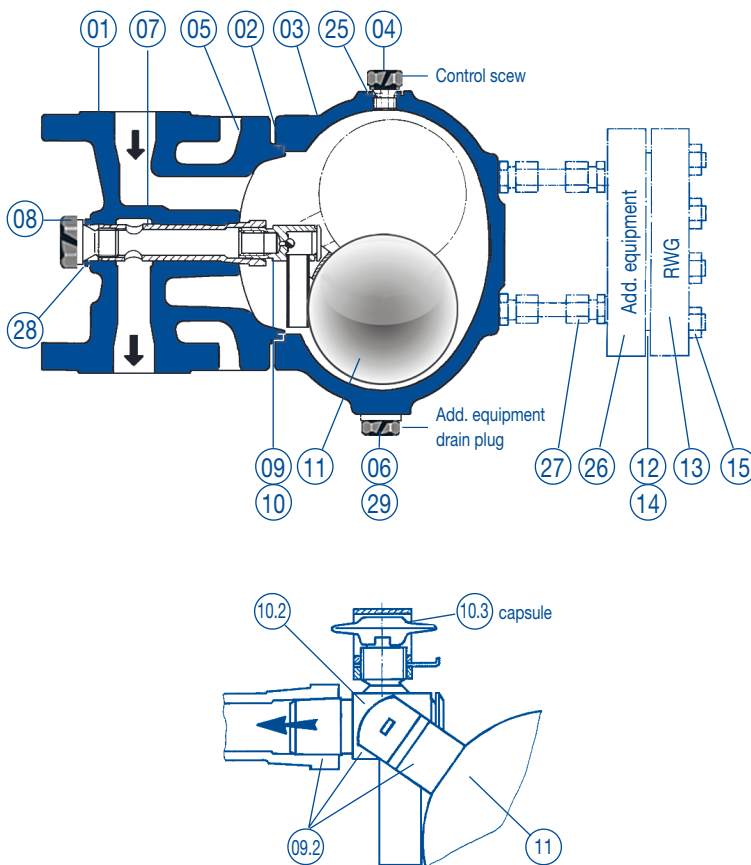
**DN40/50:** Conformity verified through the mark CE 0525.



Dimensions (in mm), Weight (in kg)

DN	15	20	25	40	50
A	150	150	160	230	230
B	225	225	225	300	300
C	115	115	115	150	150
D	95	95	95	135	135
E	105	105	105	150	150
Weight	13	13,5	14	34,5	35
Weight with RWG	14	14,5	15	36,5	37

## Spare Parts



- 01 **Housing flange:** EN-JS 1049
- 02 **Seal:** Cu/Soft iron
- 03 **Main housing:** EN-JS 1049
- 04 **Control screw:** SS 1.4104
- 05 **Set of stud bolts and nuts:** 8.8 acc. DIN 939/934
- 06 **Drain plug:** G 1/2, 5.8, DIN 910
- 07 **Protective sleeve,** SS 1.4057
- 08 **Support bolt:** SS 1.4104
- 09 **Float control assembly\*\*:**  
SS 1.4057/1.4112/1.4301/1.4104 (1.4571)\*
- 09.2 **Complete Float Control with built-on membrane capsule venting device RIFOKa\*\*:**  
SS 1.4057/1.4112/1.4301/1.4104/VA-Hastelloy
- 10 **Support assembly with rotary valve and cotter pin\*\*:**  
SS 1.4057/1.4112/1.4301/1.4104 (1.4571)\*
- 10.2 **Complete Supporting Structure incl. rotary slide valve, cotter pin and built-on RIFOKa-membrane capsule venting device\*\*:** SS 1.4057/1.4112/1.4301/1.4104
- 11 **Float with lever:** SS 1.4301 (1.4571)\*
- 12 **Maxosglas:** as per DIN 7081
- 13 **RWG frame:** S 235 JR
- 14 **2 gaskets for RWG:** Soft material
- 15 **Set of stud bolts and nuts:** A4-70, DIN 938/934
- 25 **Seal:** Soft iron
- 26 **Frame:** S 235 JR
- 27 **Cutting ring threaded joint:** C-Steel
- 28 **Seal:** Soft iron
- 29 **Seal:** Soft iron

To ensure correct parts delivery, specify part number, works standard-sheet number, DN, and for control components the cross-section, which is to find at the supporting screw.

\* Depending on operating conditions

\*\* Due to sealing requirements marked items cannot be supplied as individual parts.