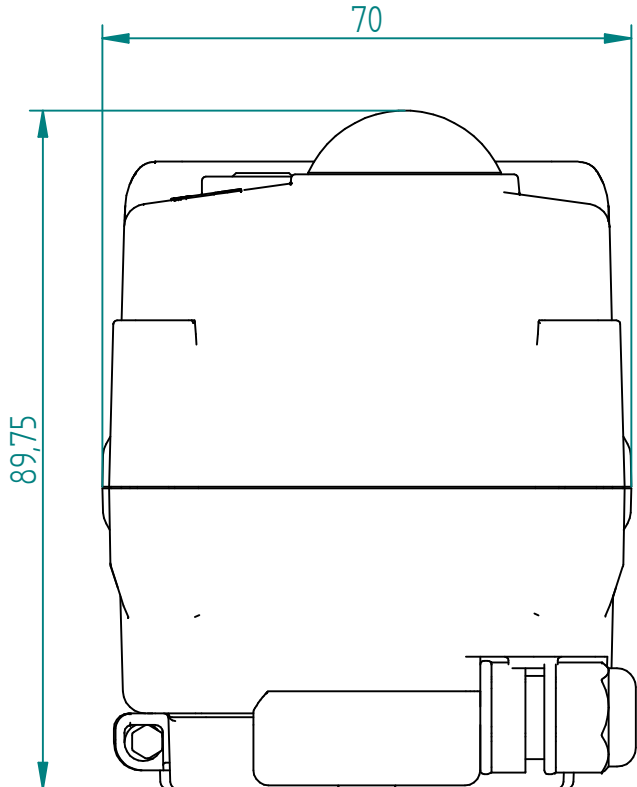
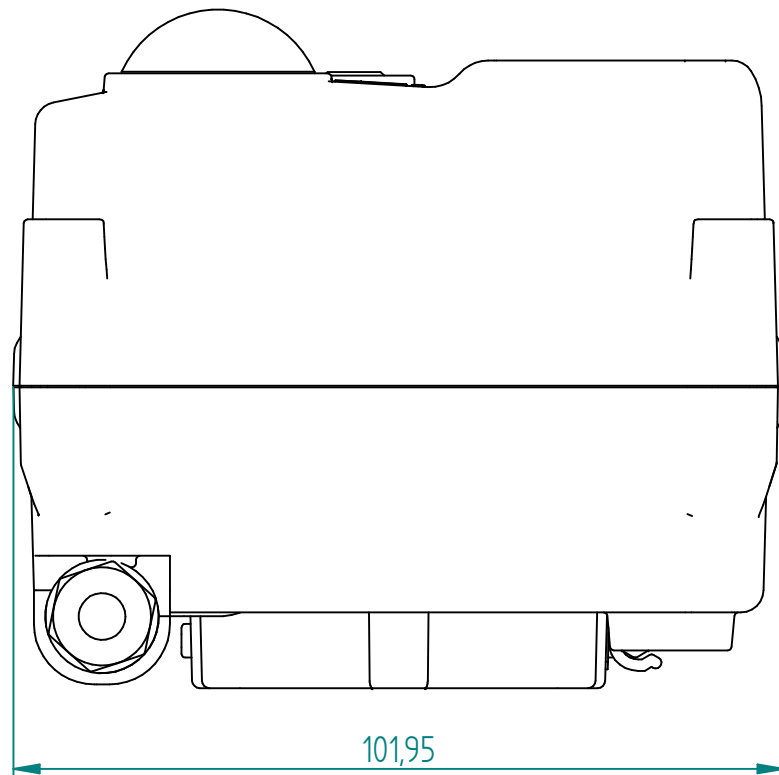
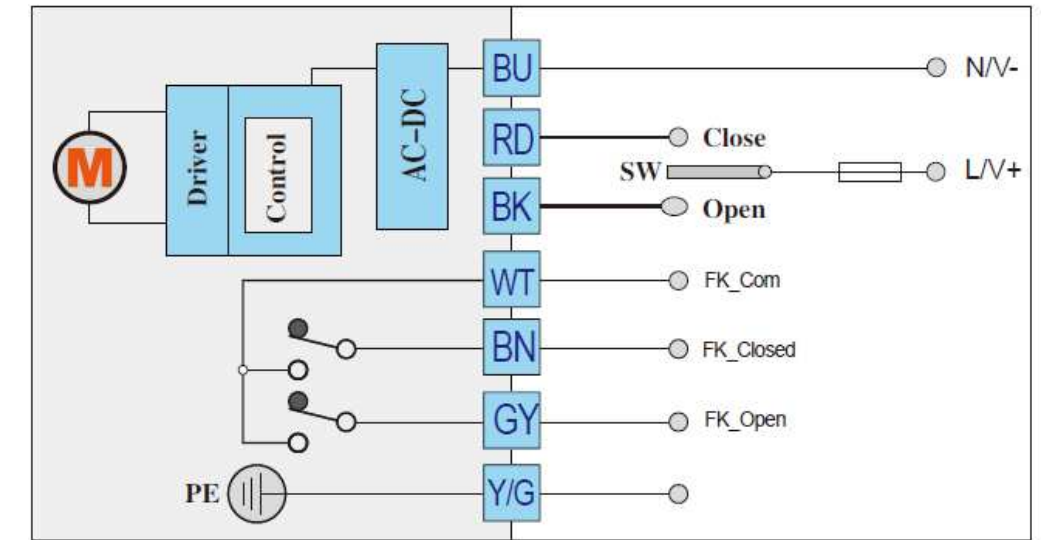


DETAIL A

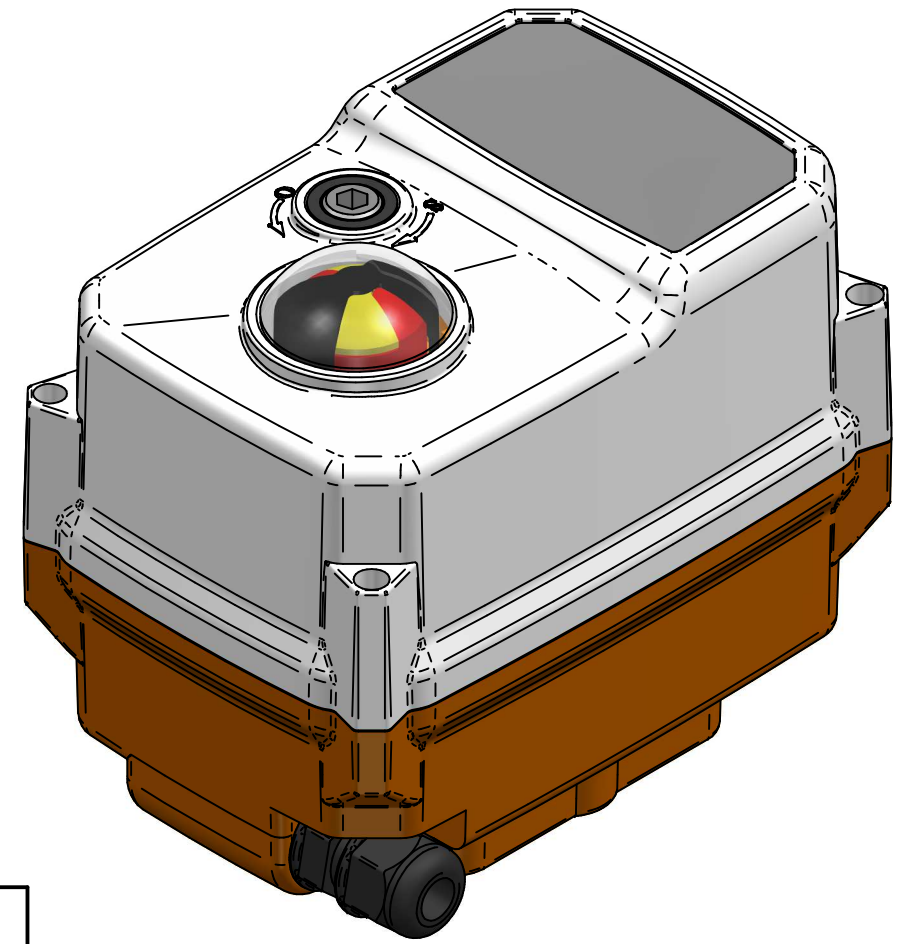


B3S



Control instructions:

- SW is connected with **RD**, the actuator will rotate clockwise . When the valve is closed, **WT** is connect with **BN**, giving signal of closing.
- SW is connected with **BK**, the actuator will rotate anticlockwise . When the valve is open, **WT** is connect with **GY**, giving signal of opening.
- ※ Notice 1: **WT** is not connected with **GY** and **BN**, when the actuator is rotating.
- ※ Notice 2: The feedback signal is a little earlier than the actual position, so please do not cut power immediately, when you get the feedback signal.



| | | | | | | |
|--|----------|------|------------|---------------------------------|----------------------|--|
| TITLE: ON/OFF EL ACT. TCR-02, ABS BODY, B3S IP67, HEATER, FEEDBACK SWITCHED FOR OPEN/CLOSE 24V, 10S, 20NM, 5 MTR CABLE ◊14-F03/F05 | | NAME | DATE | SIZE | DWG NO | UNLESS OTHERWISE SPECIFIED DIMENSIONS ARE IN MILLIMETERS AND TOLERANCES ARE +/-0,5 |
| | DRAWN | MOTO | 24.01.2020 | A3 | QIFTCR-S024-002-0020 | |
| | CHECKED | ORLA | 24.01.2020 | FILE NAME: QIF-TCR02 ON-OFF.dft | | |
| | ENG APPR | TOCO | dd.mm.yyyy | SCALE: 1:1 | REV: | |
| | MGR APPR | TOCO | dd.mm.yyyy | WEIGHT: | SHEET: 1 OF 1 | |

| REV | DESCRIPTION | DATE | APPROVED |
|------------------|-------------|------|----------|
| REVISION HISTORY | | | |