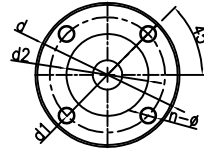
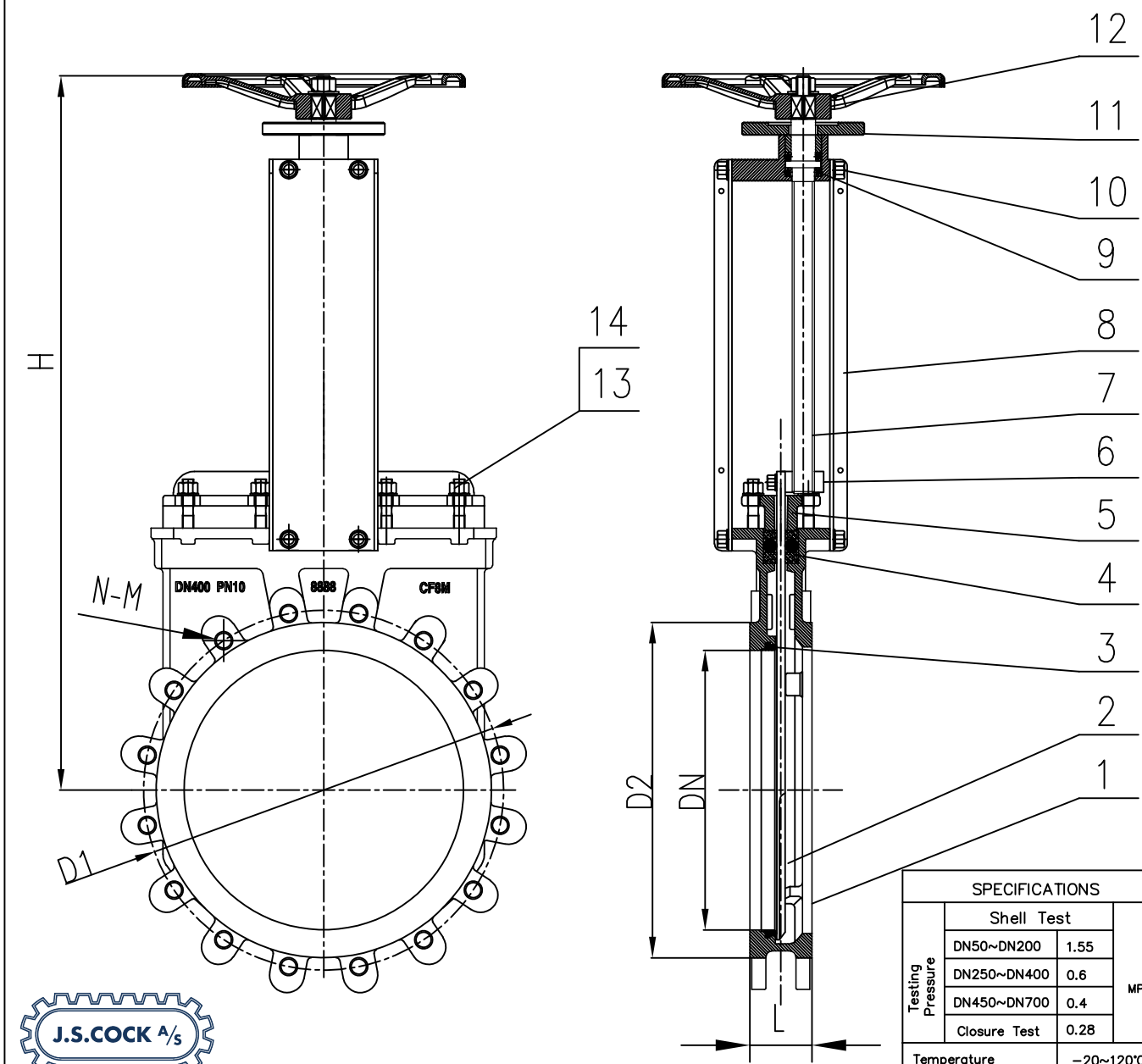


ISO 5210 Flange

Flange	d	d1	d2	n- $\phi$
F12	150	125	85	4-14
F14	175	140	100	4-18
F16	210	165	130	4-22



Size	Main Dimension (mm) PN10				
DN	D1	N-M $\phi$	L	H	Flange
300	400	12-M20	76	850	F12
350	460	16-M20	76	950	F12
400	515	16-M24	89	1020	F14
450	565	20-M24	89	1080	F14
500	620	20-M24	114	1170	F16
600	725	20-M27	114	1400	F16
700	840	24-M27	117	1750	F16



Technical Requirements

1. Design & manufacture conform to MSS SP-81
2. Face-to-Face conforms to MSS SP-81
3. Flange dimensions conform to BS NE 1092
4. Test & Inspect conform to MSS SP-81

NO	PART NAME	MATERIAL	REMARKS
14	Nut	A194 8M	
13	Bolt	A193 B8M	
12	Hand wheel	GGG40	
11	Up flange	Q235B	
10	Bolt	A4-70	
9	Needle bearing	SS316	
8	Support plate	Q235A	
7	Stem	A276 SS316	
6	Stem nut	Brass	
5	Gland	A351 CF8M	
4	Packing	PTFE	
3	Seat	VITON	
2	Knife	A240 SS316	
1	Body	A351 CF8M	



SPECIFICATIONS	
Testing Pressure	Shell Test
	DN50~DN200 1.55
	DN250~DN400 0.6
	DN450~DN700 0.4
	Closure Test 0.28
Temperature	-20~120°C
Applicable Media	Wast water, slurry.

DESIGNED BY			
CHECKED BY			
STANDARDIZED BY		DRAWING NO	REV
APPROVED BY		PZ75X-10R	0
THE USER CONFIRM		Knife Gate Valve	
		DATE	