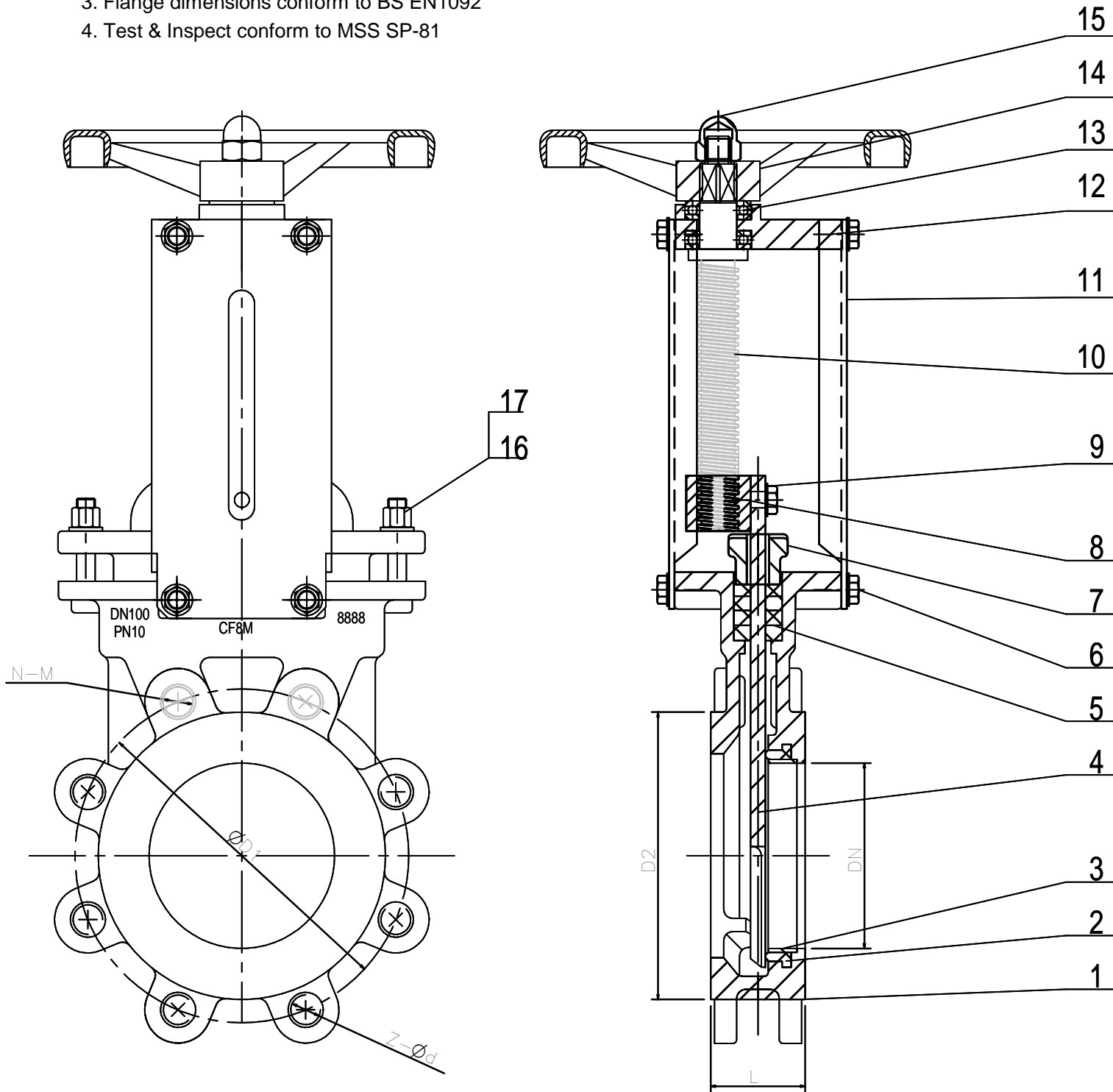


Technical Requirements


1. Design & manufacture conform to MSS SP-81
2. Face-to-Face conforms to MSS SP-81
3. Flange dimensions conform to BS EN1092
4. Test & Inspect conform to MSS SP-81



Size	Main Dimension PN10				
	DN	D1	D2	N-M $\bullet$	z-Ød $\oplus$
50	125	100	2-M16	2-M16	48
80	160	135	2-M16	6-M16	51
100	180	155	2-M16	6-M16	51
125	210	185	2-M16	6-M16	57
150	240	210	2-M20	6-M20	57
200	295	265	2-M20	6-M20	70
250	350	320	4-M20	8-M20	70
300	400	368	4-M20	8-M20	76
350	460	428	6-M20	10-M20	76
400	515	482	6-M24	10-M24	89
450	565	530	8-M24	12-M24	89
500	620	582	8-M24	12-M24	114
600	725	682	8-M27	12-M27	114

NO	PART NAME	MATERIAL	REMARKS
17	Nut	A194-8M	
16	Bolt	A193-B8M	
15	Hand wheel nut	AISI 1035	
14	Hand wheel	malleable cast iron	
13	Upper bearing	High-quality steel	
12	Bearing pedestal	WCB	
11	Support plate	Q235A	
10	Stem	SS304	
9	Screw	A4-70	
8	Stem nut	Brass	
7	Gland	CF8M	
6	Screw	A4-70	
5	Packing	PTFE	
4	Knife	SS316	
3	Detent ring	SS316	
2	Seat	EPDM	
1	Body	CF8M	

SPECIFICATIONS			
Nominal pressure		PN10	
Testing Pressure	Shell Test	1.55	MPa
	Closure Test	0.28	
	Back seat Test	/	
	Air Test	/	
Temperature		-29~120°C	
Applicable Media		Wast water, slurry.	

	NAME	DATE	SIZE	DWG NO	UNLESS OTHERWISE SPECIFIED DIMENSIONS ARE IN MILLIMETERS AND TOLERANCES ARE +/-0,5
	DRAWN	MOTO	31.05.2018	A3 PZ75X-10R	
	CHECKED	TOCO	31.05.2018	FILE NAME: QIF-170-003-DN50-DN600.dft	
	ENG APPR	TOCO	31.05.2018	SCALE:	
TITLE	MGR APPR	TOCO	31.05.2018	WEIGHT:	SHEET: 1 OF 1

REV	DESCRIPTION	DATE	APPROVED
REVISION HISTORY			