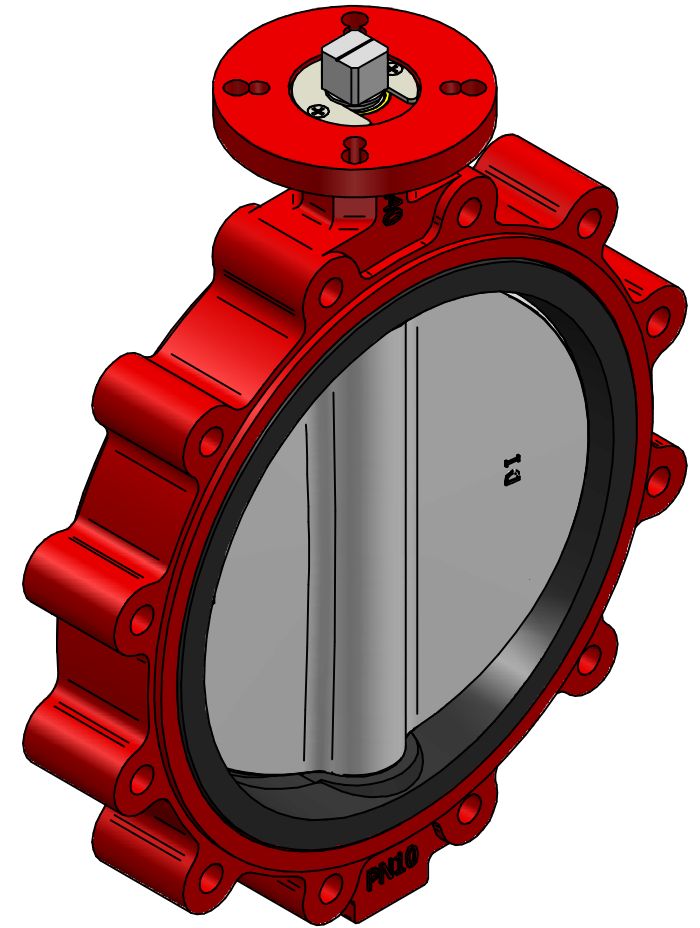
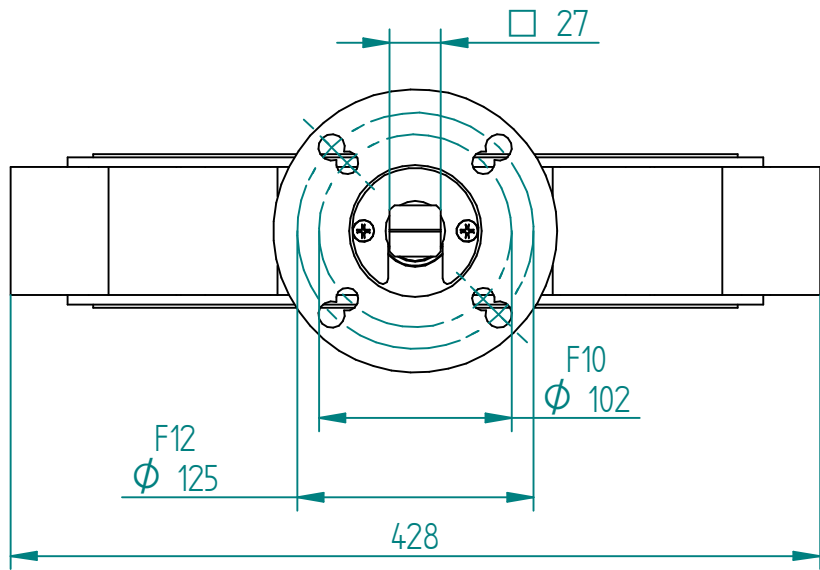
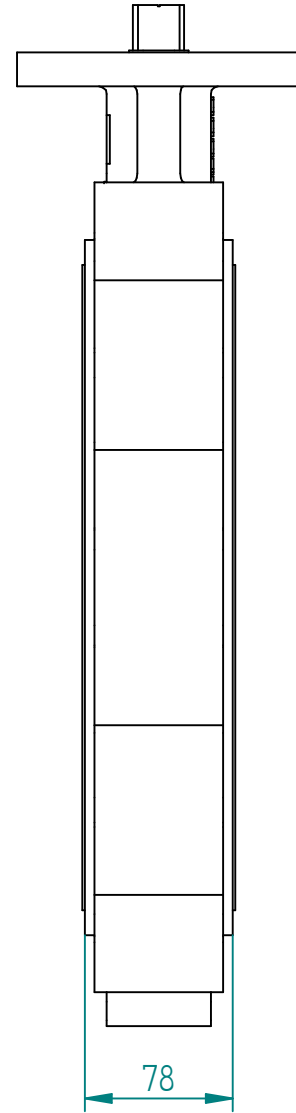
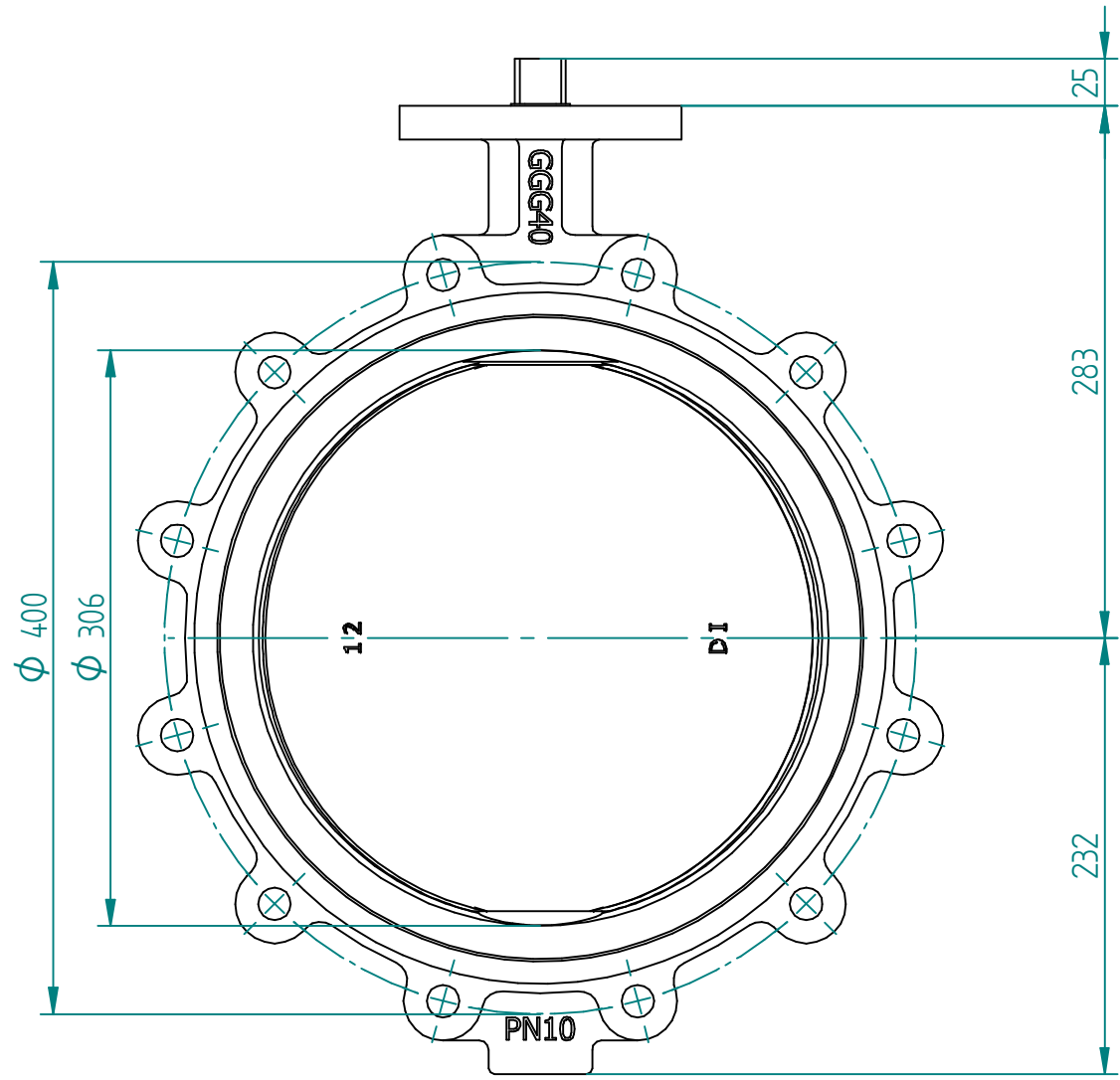


| No. | Part Name | Material   |
|-----|-----------|------------|
| 1   | Body      | GGG40      |
| 2   | Disc      | DI+Nylon11 |
| 3   | Shaft     | SS416      |
| 4   | Seat      | EPDM       |



TITLE BF-VALVE DN300 PN10 LUG  
 CONC. GGG40/DI+NYLON/SS416/EPDM F10/12 SQ22XH25  
 BARE SHAFT 480NM@10BAR

|          | NAME | DATE       | SIZE                            | DWG NO           |
|----------|------|------------|---------------------------------|------------------|
| DRAWN    | RAGA | 27.05.2024 | A3                              | QIF-110-011-0300 |
| CHECKED  | TOCO | dd.mm.yyyy | FILE NAME: QIF-110-011-0300.dft |                  |
| ENG APPR | TOCO | dd.mm.yyyy | SCALE: 1:4                      | REV: 03          |
| MGR APPR | TOCO | dd.mm.yyyy | WEIGHT: 40 kg                   | SHEET: 1 OF 1    |

UNLESS OTHERWISE SPECIFIED  
 DIMENSIONS ARE IN MILLIMETERS  
 AND TOLERANCES ARE +/-0,5

| REV              | DESCRIPTION                               | DATE       | APPROVED |
|------------------|-------------------------------------------|------------|----------|
| 03               | Top Flange Updated to F10/F12, stem SQR22 | 27.05.2024 | RAGA     |
| REVISION HISTORY |                                           |            |          |