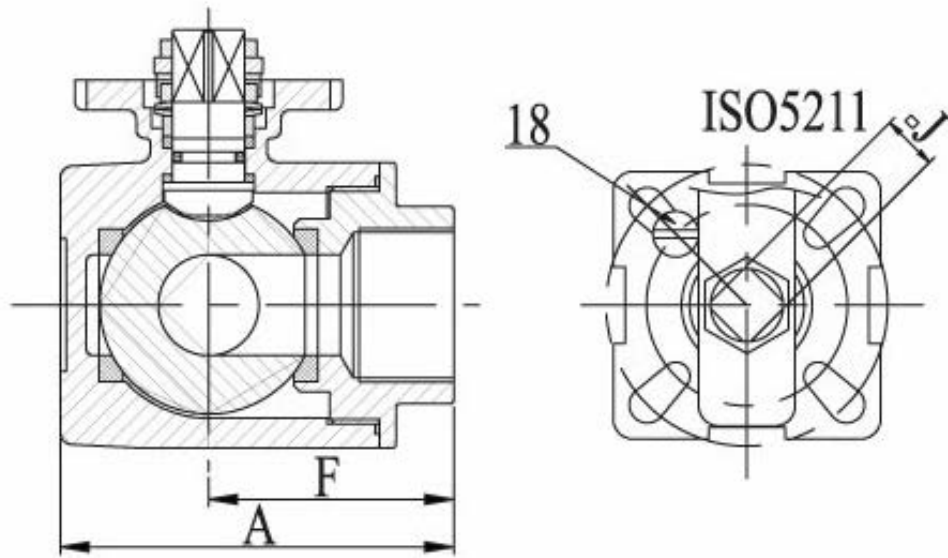
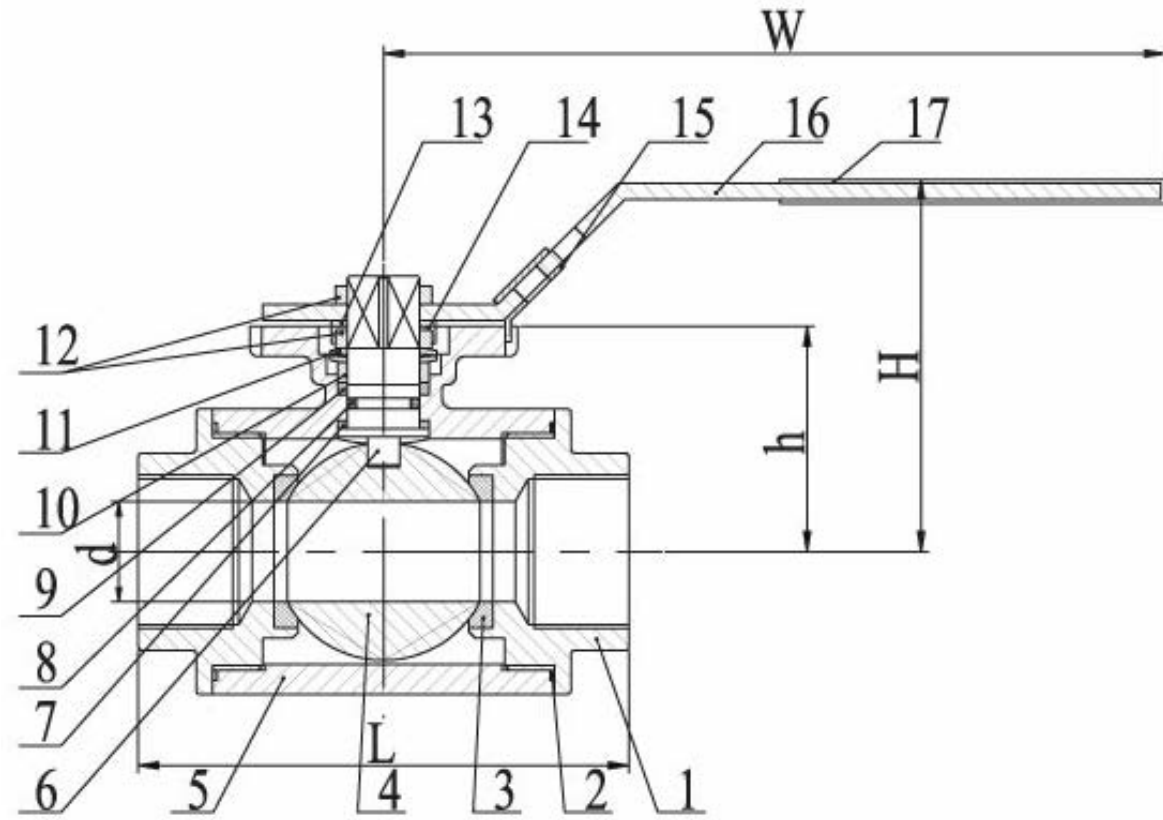


Investment Castings For Body And Cap
 Entry Blow-Out Proof Stem
 Mounting Pad: ISO5211
 Pressure Rating: 1000PSI (PN63)
 Threated Ends: ANSI B2.1, BS 21, DIN 259/2999
 Material: CF8M, CF8, CF3M, WCB
 Pressure Test: API 598



ITEM	PART	MATERIAL	QTY
1	CAP	CF8M	3
2	GASKET	PFFE	3
3	BALL SEAT	PTFE	4
4	BALL	CF8M	1
5	BODY	CF8M	1
6	STEM	SS316	1
7	THRUST WASHER	PTFE	1
8	O-RING	VITON	1
9	STEM PACKING	PTFE	1
10	STEM RING	CF8M	1
11	WASHER	SS301	1
12	NUT	SS304	2
13	PLATE WASHER	SS304	1
14	NUT STOPPER	SS304	1
15	LOCK DEVICE	SS304	1
16	HANDLE	SS304	1
17	HANDLE COVER	PLASTIC	1
18	STOP PIN	SS304	1



SIZE	d	L	H	W	F	A	J	ISO5211	N-M	KGS
1/4"	9.5	75	66	130	37.5	57.5	9	F03/F04	8	0.70
3/8"	11	75	66	130	37.5	57.5	9	F03/F04	8	0.67
1/2"	12	75	66	130	37.5	57.5	9	F03/F04	8	0.63
3/4"	15	85	72	161	42.5	65.5	11	F04/F05	9	0.94
1"	20	100	77	161	50.0	79.0	11	F04/F05	15	1.38
1-1/4"	25	122	92	203	61.0	97.0	14	F05/F07	20	2.89
1-1/2"	32	131	96	203	65.5	106.5	14	F05/F07	30	3.60
2"	40	158	107	203	79.0	129.0	14	F05/F07	45	6.21
2-1/2"	49	178	135	254	89	145	17	F07/F10	50	9.00
3"	60	202	147	254	101	167	17	F07/F10	80	13.10
4"	75	246	160	310	123	203	17	F07/F10	110	22.10



TITLE	3-WAY BALL VALVE REDUCED BORE THREADED END, 1000 WOG WITH MOUNTING PAD (T TYPE)	NAME	DATE	SIZE	DWG NO	
		DRAWN	MOTO	dd.mm.yyyy	A3	
		CHECKED	TOCO	dd.mm.yyyy	FILE NAME: QIF-100-005-DN0,25-DN4_INCH.pdf	
		ENG APPR	TOCO	dd.mm.yyyy	SCALE:	REV:
MGR APPR	TOCO	dd.mm.yyyy	WEIGHT:	SHEET: 1 OF 1		

UNLESS OTHERWISE SPECIFIED
 DIMENSIONS ARE IN MILLIMETERS
 AND TOLERANCES ARE +/-0,5

REV	DESCRIPTION	DATE	APPROVED
REVISION HISTORY			