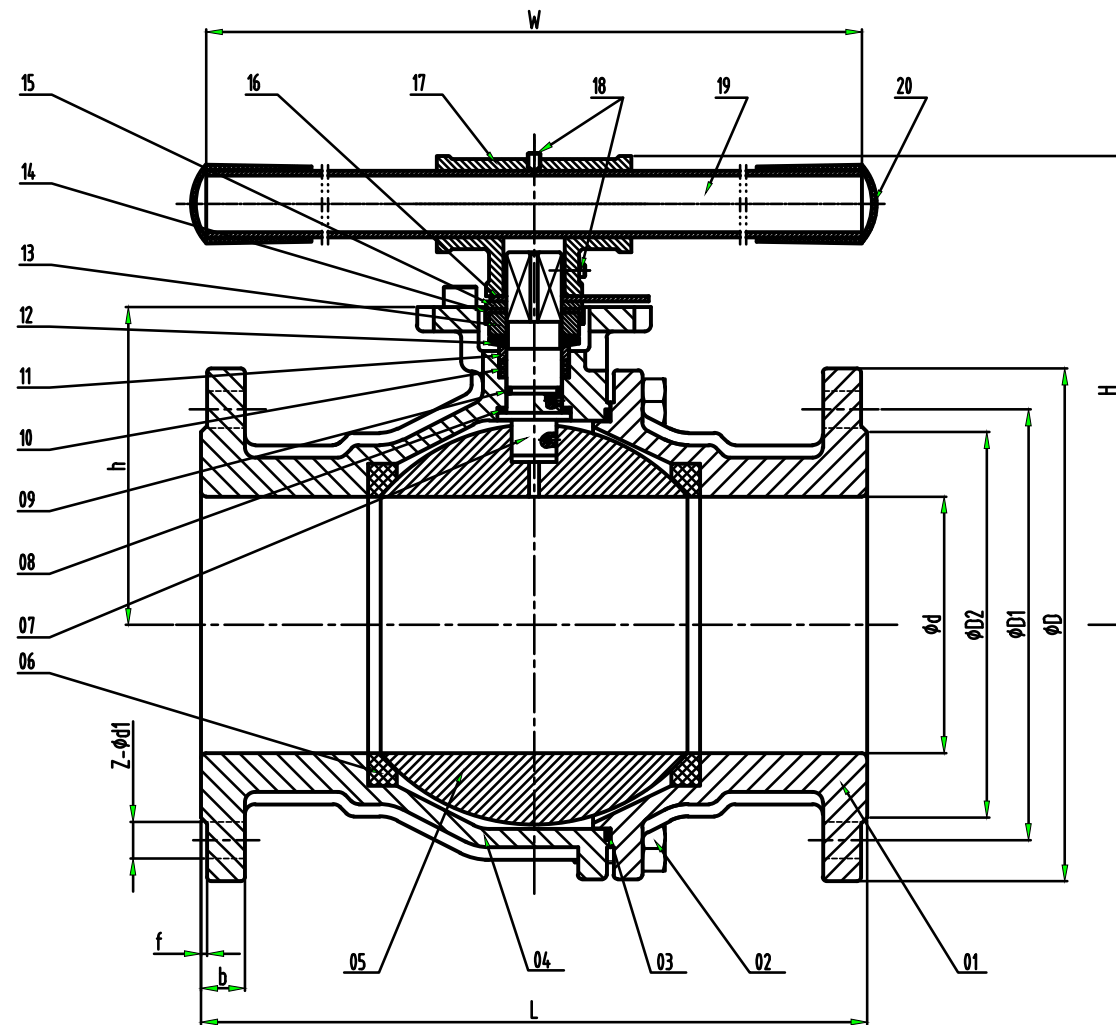
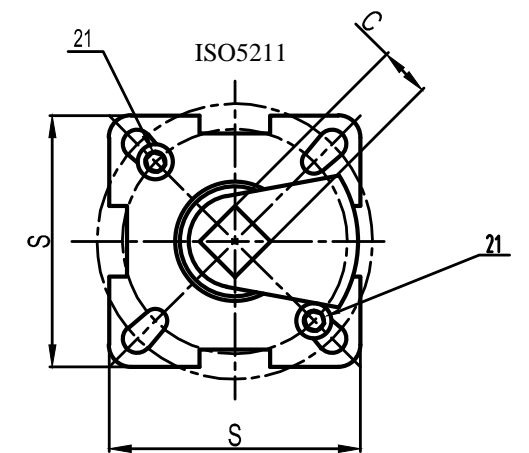


1. Fire-safe design;
2. Anti-static device (to be selected);
3. Flange end: DN125-DN200(PN16): DIN25543
4. Face to face: DIN3202-F5;
5. Test: EN12266, API598



ITEM	PARTS	MATERIAL	QTY.
01	CAP	1.4408(CF8M)	1
02	BOLT	SS304	4(8,12)
03	BODY GASKET	PTFE	1
04	BODY	1.4408(CF8M)	1
05	BALL	SS316	1
06	BALL SEAT	R-PTFE (15% )	2
07	STEM	SS316	1
08	THRUST WASHER	PTFE	1
09	O- RING	VITON	1
10	STEM PACKING	PTFE	1
11	PACKING RING	SS304	1
12	BELLEVILLE WASHER	SS301	2
13	NUT	SS304	1
14	NUT STOPPER	SS304	1
15	PLATE WASHER	SS304	1
16	LOCK DEVICE	SS304	1
17	SLEEVE	SS304	1
18	JACKSCREW	SS304	2
19	HANDLE	GALVANIZED PIPE	1
20	PLASTIC COVER	PLASTIC	1
21	STOP PIN	SS304	2

SIZE	d	L	D	D1	D2	b	f	H	W	C	ISO5211	Z-Ød1	h	s	N·m	Kgs
5"	125	325	250	210	188	22	3	228	600	22	F10/F12	8-Ø18	155	114	200	50.5
6"	150	350	285	240	212	22	3	246	600	22	F10/F12	8-Ø22	172.5	114	300	76.8
8"	200	400	340	295	268	24	3	310	800	27	F12/F14	12-Ø22	217	131	400	125



	NAME	MOTO	DATE	dd.mm.yyyy	SIZE	A3	DWG NO	QIF-100-002-DN125-DN200
	DRAWN	MOTO	DATE	dd.mm.yyyy	FILE NAME:			
	CHECKED	TOCO	DATE	dd.mm.yyyy	SCALE:		REV: .....	
	ENG APPR	TOCO	DATE	dd.mm.yyyy	WEIGHT:		SHEET: 1 OF 1	
MGR APPR	TOCO	DATE	dd.mm.yyyy					

UNLESS OTHERWISE SPECIFIED DIMENSIONS ARE IN MILLIMETERS AND TOLERANCES ARE +/-0,5

REV	DESCRIPTION	DATE	APPROVED
REVISION HISTORY			