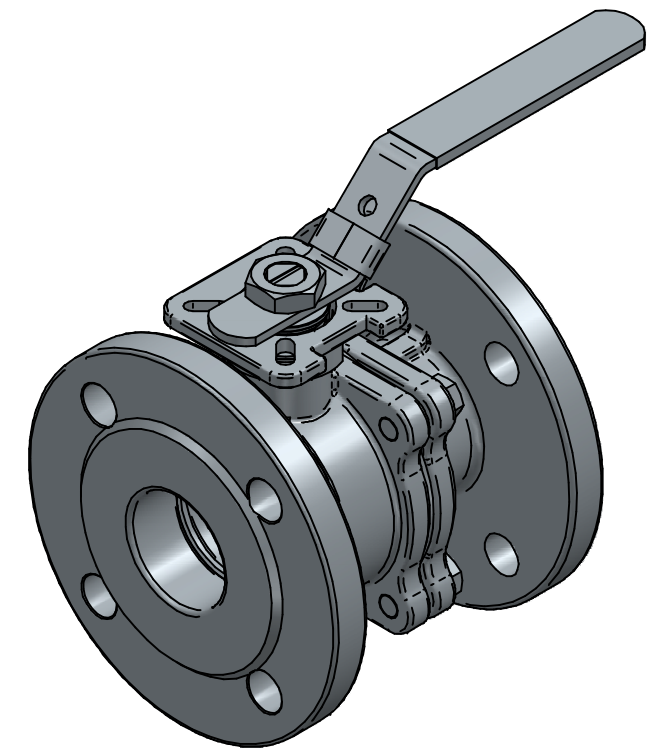


DETAIL A

Pos	Part name	Material
1	Body	1.4408 (CF8M)
2	Cap	1.4408 (CF8M)
3	Ball	SS316
4	Ball seat	PTFE
5	Stem	SS316
6	Stem Packing	PTFE
7	O-Ring	VITON
8	V-Packing	PTFE
9	Gland	304
10	Washer	301
11	Nut	304
12	Thrust Washer	304
13	Washer	304
14	Handle	304
15	Plastic Cover	Plastic
16	Locking	304
17	Body Gasket	PTFE
18	Bolt	304



TITLE 2PC BALL VALVE FLANGED SS316, DN50, V-PACKING
PN40 FLANGE CONNECTION, Ø14MM F05/F07
TORQUE 25NM F05/F07 14MM PN16, PN25, PN40

	NAME	DATE	SIZE	DWG NO
DRAWN	RAGA	26.08.2024	A3	QIF-100-002-0050C
CHECKED	TOCO	dd.mm.yyyy	FILE NAME: QIF-100-002-0050C.dft	
ENG APPR	TOCO	dd.mm.yyyy	SCALE: 1:2	REV: 00
MGR APPR	TOCO	dd.mm.yyyy	WEIGHT: 8.9 kg	SHEET: 1 OF 1

UNLESS OTHERWISE SPECIFIED
DIMENSIONS ARE IN MILLIMETERS
AND TOLERANCES ARE +/-0,5

REV	DESCRIPTION	DATE	APPROVED
REVISION HISTORY			