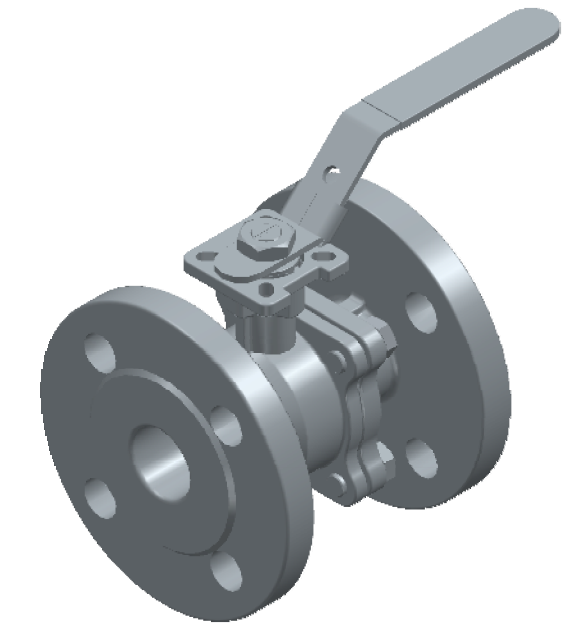


DETAIL A

Pos	Part name	Material
1	Body	1.4408 (CF8M)
2	Cap	1.4408 (CF8M)
3	Ball	SS316
4	Ball seat	PTFE
5	Stem	SS316
6	Stem packing	PTFE
7	O-ring	VITON
8	V-Packing	PTFE
9	Gland	SS304
10	Washer	SS301
11	Nut	SS304
12	Thrust washer	SS304
13	Washer	SS304
14	Handle	SS304
15	Plastic cover	Plastic
16	Locking	SS304
17	Body gasket	PTFE
18	Bolt	SS304



TITLE 2PC BALL VALVE FLANGED SS316, DN32, V-PACKING  
PN40 FLANGE CONNECTION, WITH SQUARE SPINDLE  
TORQUE 14NM F04/F05 11MM PN16, PN25, PN40

	NAME	DATE	SIZE	DWG NO
DRAWN	RAGA	19.06.2024	<b>A3</b>	QIF-100-002-0032C
CHECKED	TOCO	dd.mm.yyyy	FILE NAME: QIF-100-002-0032C.dft	
ENG APPR	TOCO	dd.mm.yyyy	SCALE: 1:2	REV: 00
MGR APPR	TOCO	dd.mm.yyyy	WEIGHT: 4.95 kg	SHEET: 1 OF 1

UNLESS OTHERWISE SPECIFIED  
DIMENSIONS ARE IN MILLIMETERS  
AND TOLERANCES ARE +/-0,5

REV	DESCRIPTION	DATE	APPROVED
REVISION HISTORY			