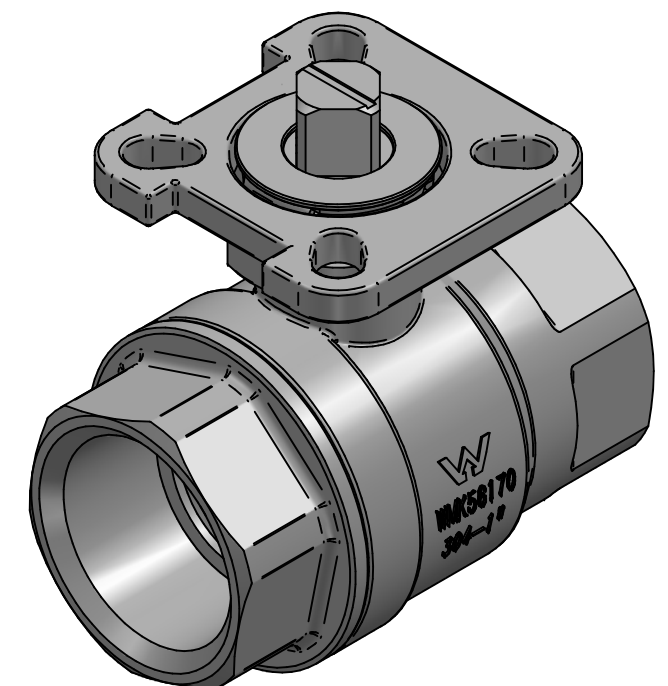
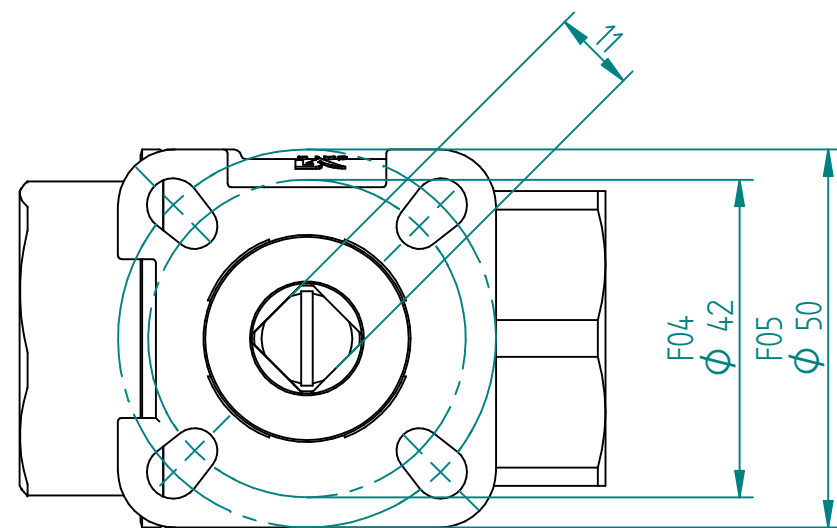


| No. | Part Name | Material | Qty |
|-----|---------------|-------------|-----|
| 1 | Body | CF8M | 1 |
| 2 | Ball Seat | R-PTFE(15%) | 2 |
| 3 | Ball | SS316 | 1 |
| 4 | Body Gasket | PTFE | 1 |
| 5 | Cap | CF8M | 1 |
| 6 | Stem | SS316 | 1 |
| 7 | Thrust Washer | PTFE | 1 |
| 8 | O-Ring | Viton | 1 |
| 9 | Stem Packing | PTFE | 1 |
| 10 | Packing Ring | SS304 | 1 |
| 11 | Nut | SS304 | 1 |



| DRAWN | NAME | DATE | SIZE | DWG NO |
|----------|------|------------|----------------------------------|-------------------|
| | RAGA | 10/4/2023 | A3 | QIF-100-001-0025B |
| CHECKED | TOCO | dd.mm.yyyy | FILE NAME: QIF-100-001-0025B.dft | |
| ENG APPR | TOCO | dd.mm.yyyy | SCALE: 1:1 | REV: 01 |
| MGR APPR | TOCO | dd.mm.yyyy | WEIGHT: 0.87kg | SHEET: 1 OF 1 |

UNLESS OTHERWISE SPECIFIED DIMENSIONS ARE IN MILLIMETERS AND TOLERANCES ARE +/-0,5

| REV | DESCRIPTION | DATE | APPROVED |
|------------------|-------------|------|----------|
| REVISION HISTORY | | | |

TITLE 2PC 1" ISO/SQUARE TOP BSP BALL VALVE SS316 10Nm SS316 BODY, STEM, BALL AND SCREWS F04/F05 11mm MOUNTING PAD, FULL BORE, BARE STEM