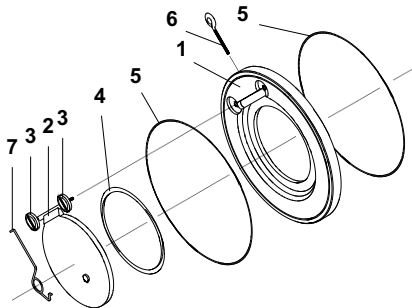


d	mm	40	50	63	75	90	110	140	160	225	280	315
DN	mm	32	40	50	65	80	100	125	150	200	250	300
G	Zoll	1 1/4"	1 1/2"	2"	2 1/2"	3"	4"	5"	6"	8"	10"	12"
A	mm	85,0	95,0	109,0	129,0	144,0	164,0	195,0	220,0	275,0	330,0	380,0
B	mm	15,0	16,0	20,0	20,0	20,0	22,0	22,0	26,0	35,0	40,0	45,0
C	mm	18,0	22,0	32,0	40,0	52,0	70,0	92,0	112,0	150,0	190,0	216,0
OPEN pressure	m bar S4.60	10,0	10,0	14,3	12,3	12,0	10,0	9,6	12,5	18,8	17,3	21,0
	m bar S4.60 →	1,0	1,0	1,5	1,2	1,0	1,0	1,0	1,0	1,2	1,0	1,2
	m bar S4.70 →	20,0	20,0	20,0	20,0	20,0	20,0	20,0	20,0	20,0	20,0	20,0
PN	bar	10,0	10,0	10,0	10,0	10,0	10,0	10,0	10,0	6,0	6,0	6,0

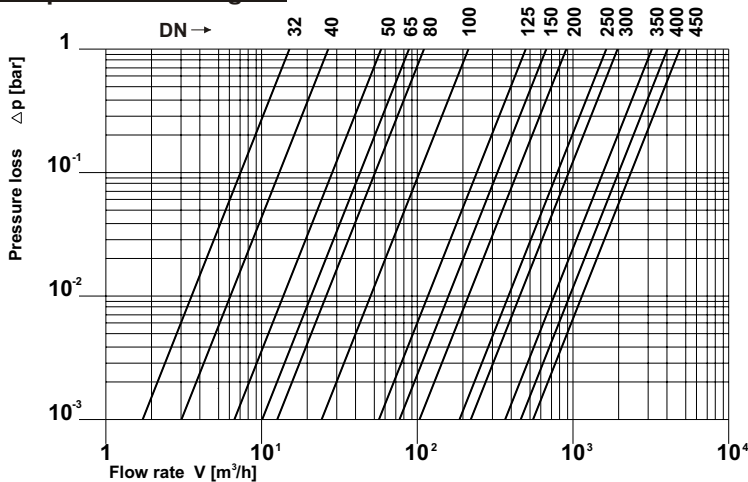
Dimensions in mm!



Parts:

1. Body
2. Disk
3. Hold down screw
4. O-Ring
5. O-Ring
6. Holding device
7. Feder

Flow - pressure loss diagram



General:

- Sealing material: EPDM / FPM
- Body material: **PVC-u** - PP - PVDF
- With or without return spring
- Dimensions: DN 32 / d 40 - DN 500 / d 560

Operating pressure:

- see Pressure - Temperature table

Return spring (S4.70):

Material: - Special steel (WSt. 1.4401)
- Hastelloy® (WSt. 2.4610)

Technical specification:

For example:
TYPE PRAHER
PVC-u Wafer check valve S4 DN 32 d 40
Sealing material EPDM
Return spring WSt 1.4401(S4.70)

Features:

- simple and robust construction
- mounting between flange PN in accordance with DIN
- jointing face with o-rings in several qualities
- supporting ring for an easier mounting of the check valve
- low pressure drop
- TYPE S4 60: without return spring
- TYPE S4 70: with return spring

Special fitting =

Spacer. For optimal flow for ANSI, ASTM and JIS piping systems.

Subjects to technical modification!

Large empty rounded rectangular area with horizontal dashed lines for technical drawing or notes.

Mounting instruction:

In case of mounting on a pump (at pressure side) please note the following:

- no direct mounting on pump flange or following bend
- for relief zone allow 5 times the nominal bore

Attention:

In case of a use of PP check valves, a special fitting has to be installed in the piping system (outlet) to guarantee the correct opening.

Note:

For pulsating flow we recommend check valves TYPE S4.70 rather than TYPE S4.60.