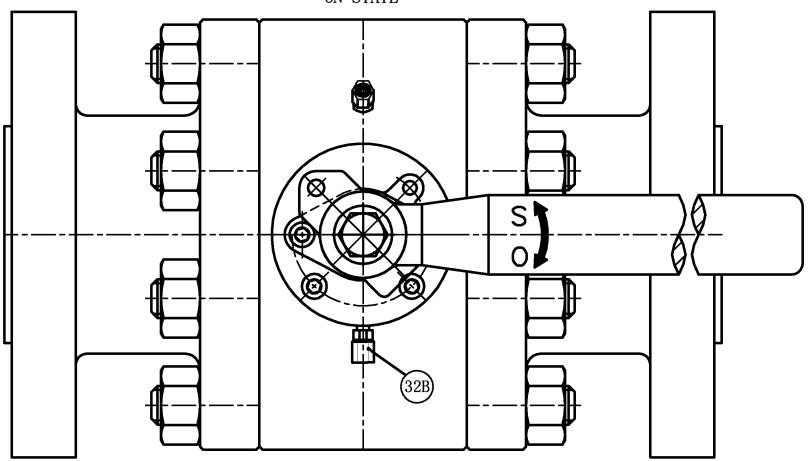
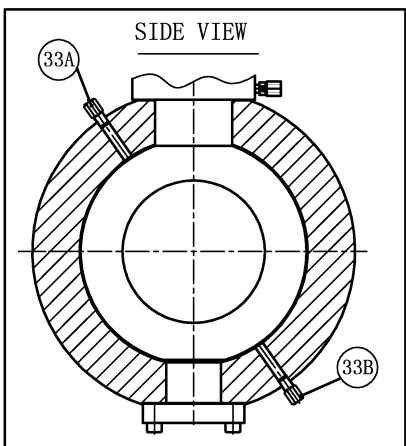


66E	O-RING	HNBR			
66D	O-RING	HNBR			
66C	O-RING	HNBR			
66B	O-RING	HNBR			
66A	O-RING	HNBR	84	ANTISTATIC BALL	SS316
41	SPRING	X-750	83	ANTISTATIC SPRING	SS316
33B	DRAIN VALVE	A350 LF2+Zn	82	FIRE RING	GRAPHITE
33A	VENT VALVE	A350 LF2+Zn	78	FLANGE NUT	CS+Zn
32B	INJECTION	A350 LF2+Zn	75C	BEARING	CS+PTFE
18	LEVER	CS	75B	BEARING	CS+PTFE
17	LIMITED PLATE	CS+Zn	74E	SCREW	SS304
16	Gland flange	ASTM A351 CF8	74C	SCREW	SS304
15	Gland	SS304	74A	SCREW	SS304
12	TRUNNION	A350 LF2	72A	BOLT	ASTM A320 L7
11	STUFF BOX	A350 LF2	71A	NUT	ASTM A194 7
09	INSERT	RPTFE	70	PACKING	GRAPHITE
08	SEAT SUPPORT	ASTM A182 F316	69	WASHER	PTFE
05	STEM	ASTM A182 F316	68	THRUST WASHER	PTFE
04	BALL	ASTM A182 F316	67C	GASKET	SS304+GRAPHITE
02	BONNET	ASTM A350 LF2	67B	GASKET	SS304+GRAPHITE
01	BODY	ASTM A350 LF2	67A	GASKET	SS304+GRAPHITE
NO.	PRAT NAME	MATERIAL	NO.	PRAT NAME	MATERIAL

TOP VIEW
ON STATE



SIDE VIEW



CLASS	DN	d	L	D	D1	D2	b	f	n-øh
150#	2"	49	178	150	120.7	92.1	14.3	2	4-19

Unit: mm

DESIGN STD.	API 6D	END CONN.	RF	
PRES. & TEMP.	ASME B16.34	PRES. TEST	API 598	
FACE TO FACE	ASME B16.10	END DIME.	ASME B16.5/B16.47	
F. S. DESIGN	API 607	SPECIAL		
TEST PRESSURE	HYDRAULIC	SHELL : 3.0 MPa	APPLICABLE MEDIA	W. O. G
	PNEUMATIC	SEAT : 2.2 MPa	APPLICABLE TEMPERATURE	-20-120 ° C
DESIGN		DATE:		TRUNNION BALL VALVE
APPROVE		DATE:		
REV:		DATE:		

