

BALL VALVE 3-PIECE FORGED STEEL TRUNNION MOUNTED CLASS 150

Type:
OMV-BAV-3P-F-TM-CL 150

Class 150 Forged Steel Trunnion Ball Valve

Bolted bonnet, Three-piece body, Trunnion ball
Full or reduced bore, Blowout proof stem
Fire safe and anti static
Dual seat with injection and drain & outlet

Standard compliance

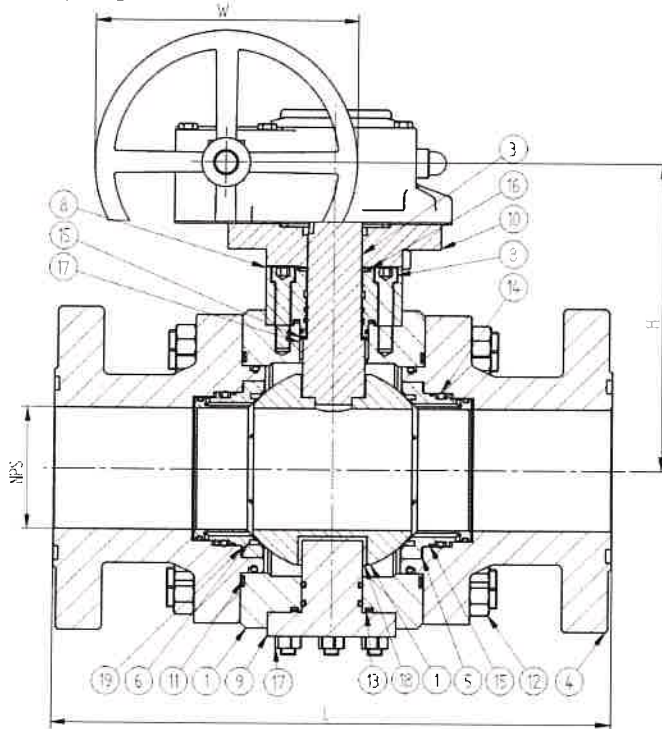
Design and manufacture: API 6D
Face to face dimension: API 6D
Flange connection: 2"-24" acc. to ASME B16.5; 22" acc. to MSS-SP-44; ASME B16.47 Series A 26" - 48", or on request

Fire safe: API 607

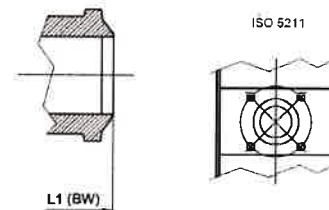
Butt welded end: ANSI B16.25

Test and inspection: API 6D

Top flange acc. to: ISO 5211



Item	Description Part name	Material
1	Body	A105; AISI 316
2	Ball	A182 F6a; AISI 316
3	Stem	A182 F316; AISI 316
4	Bonnet	A105; AISI 316
5	Seat insert	AISI 316
6	Seat ring	VITON / PTFE / Graphite
7	Gland cap	AISI 316
8	Bolt	A193-B7
9	Trunnion support	A105; AISI 316
10	Top flange	AISI 316
11	Body gasket	Graphite
12	Nut	A194-8M
13	Gland cap gasket	Graphite+AISI316
14	O-ring	VITON
15	Thrust washer	PTFE+CF
16	Fire safe gasket	Graphite+AISI316
17	Bearing	PTFE+CF
18	Trunnion bearing	PTFE+CF
19	Spring	X-750



		DIMENSIONS																	
Size	inch	2"	2 1/2"	3"	4"	6"	8"	10"	12"	14"	16"	18"	20"	24"	26"	28"	30"	32"	36"
L-RF	mm	178	190	203	229	394	457	533	610	686	762	864	914	1067	1143	1245	1295	1372	1524
L1-BW	mm	216	241	283	305	457	521	559	635	762	838	914	991	1143	1245	1346	1397	1524	1727
H	mm	130	142	185	235	325	390	445	520	550	580	605	610	725	760	790	825	870	950
W	mm	400	400	600	600	600	600	800	800	800	800	800	800	800	1000	1000	1000	1000	1000
Weight	RF	15	19	27	38	81	140	160	205	260	390	510	750	1200	1400	1860	2100	2530	2970
	BW	13.5	15.5	24.5	32.5	76	132	147	182	241	370	495	726	1125	1250	1640	1930	2390	2760

Alternative materials:

Body & Bonnet: AISI 304, AISI 316L, RG5, Duplex, Super duplex, A350 LF2

Ball: A351 CF8M; AISI 304; AISI 316

Seat: PTFE, RPTFE, Nylon, Viton

Gasket: PTFE; Spiral wound; Soft iron; Graphite

Packing: Graphite

Bolts & Nuts: A193 B7; A320 L7; A193 B16; A193 B8; A193 B8M / A194 2H; A194 4; A194 7; A194 8; A194 8M

Other material on request

Operators: Handwheel, Gearbox, Electric actuator **ALL DATA ARE NOT BINDING AND SUBJECTED TO CHANGE WITHOUT NOTICE**

