

NUTORK®

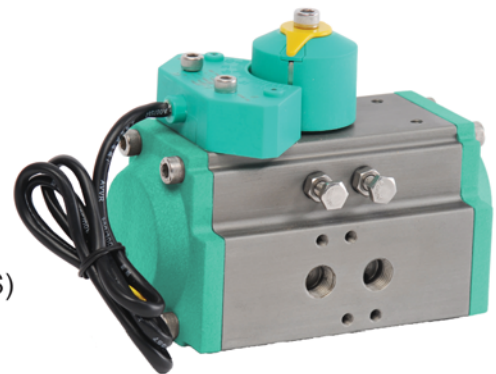
Actuators & Valves



Position Monitoring Switchbox



IP67 water-proof
IP68 (50M @72hrs tested by SGS)
SIL3 Approval



Magnet Type, 2xSPST/NO
Reed Switch, 0.5A at 250VAC



IP67 / ExdIIBT6 Explosion-proof



IP68 (30M @24hrs tested by TUV)
IP67 & ExdIIBT6 Explosion-proof
SIL3 Approval



IP67/ExdIICT6 Explosion-proof
SIL3 Approval

Position Monitoring Switchbox | NUTORK®

NTS Valve Position Monitor(Limit Switchbox)

Material of Construction

Aluminum Alloy Body: NTS-A,C,CP,K,KP. H Series

316SS Body: ES Series



NTS-C/CP
IP67 water-proof
IP68 (50M @72hrs tested by SGS)
SIL3 Approval



NTS-K/KP
IP68 (30M @24hrs tested by TUV)
IP67 & ExdIIBT6 Explosion-proof
SIL3 Approval

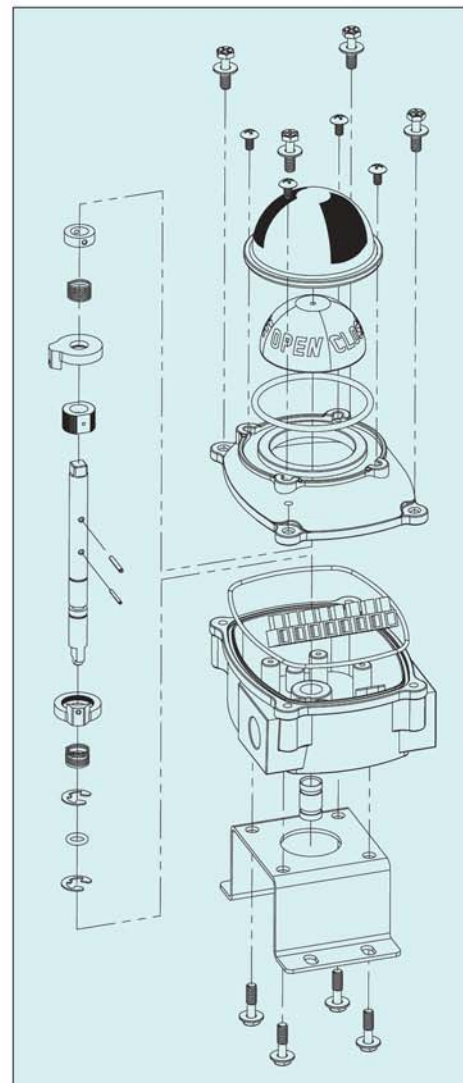


NTS-ES
IP67/ExdIIBT6
Explosion-proof



NTS-H
IP67/ExdIIBT6
Explosion-proof
SIL3 Approval

Housing	Low cooper aluminum die-casting
Coating	Epoxy-Polyester
Sealing	NBR O-rings on each interface (Dome indicator, Lower/Upper Housing, Shaft)
Cams	Poly-Carbonate
Bushings	Bronze
Shaft	AISI304 Stainless Steel
Earth Lug	Stainless Steel
Mounting Bracket	AISI304 Stainless Steel



Position Monitoring Switchbox | NUTORK®

NTS Valve Position Monitor (Limit Switchbox) NKS-A,C,CP,K,KP,E,F,H Series General Specification


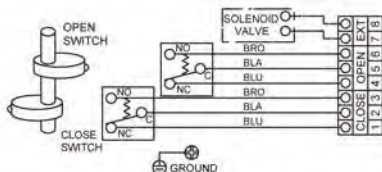

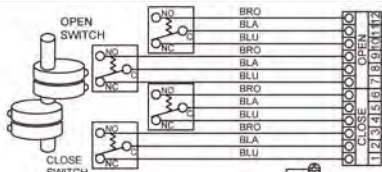

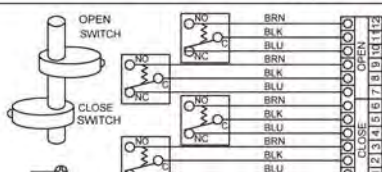

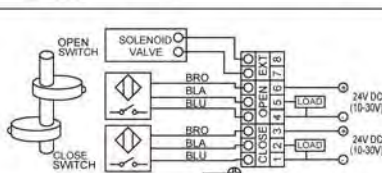

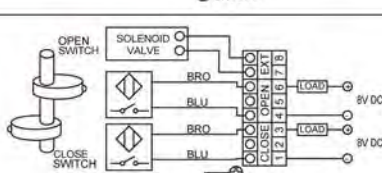

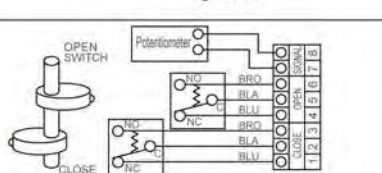

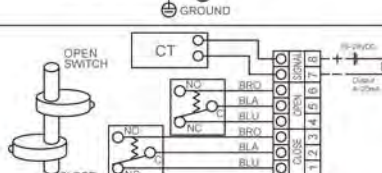

	<p>NTS-C/CP Series, Weather-Proof, SIL3 Approval</p> <ul style="list-style-type: none"> - Enclosure: Aluminum Die-casting, weather proof - IP67/NEMA 4 & 4X, IP68 water-proof - Bolts on visual position Indicator - Switches: 2, 3 or 4 x SPDT mechanical switch or proximity - Cable Entry: 2 x 1/2" NPT (std.). Option: M20, PG13.5, PF1/2", PT1/2" - Terminal Strip: 8 points (0.08 – 2.5mm²), Option: 8-16 points - Easy mounting, Namur standard, stainless steel bracket & bolts
	<p>NTS-ES Series, Ex-Proof (EExdIIBT6)</p> <ul style="list-style-type: none"> - Enclosure: Aluminum Die-casting or 316SS weather proof - IP67/NEMA 4 & 4X & Explosion proof – EExdIIBT6 - Bolts on visual position Indicator - Switches: 2, 3 or 4 x SPDT mechanical switch or proximity Option: Potentiometer (0-1, 5, 10K ohm), Position Transmitter (4-20mA DC) - Cable Entry: 2 x 3/4" NPT (std.). Option: M20, M25, PF3/4", PT3/4" - Terminal Strip: 8 points (0.08 – 2.5mm²), Option: 8-16 points - Easy mounting, Namur standard, stainless steel bracket & bolts
	<p>NTS-H Series, Ex-Proof (EExdIICT6), SIL3 Approval</p> <ul style="list-style-type: none"> - Enclosure: Aluminum Die-casting, weather-proof, IP67/NEMA 4 & 4X & Explosion proof – EExdIICT6 - Bolts on visual position Indicator - Switches: 2, 3 or 4 x SPDT mechanical switch or proximity Option: Potentiometer (0-1, 5, 10K ohm), Position Transmitter (4-20mA DC) - Cable Entry: 2 x 3/4" NPT (std.). Option: M20, M25, PF3/4", PT3/4" - Terminal Strip: 8 points (0.08 – 2.5mm²), Option: 8-16 points - Easy mounting, Namur Standard, stainless steel bracket & bolts
	<p>NTS-K/KP Series, IP67/IP68 Water-proof, ExdIIBT6 Ex-proof, SIL3 Approval</p> <ul style="list-style-type: none"> - Enclosure: Aluminum Die-casting, weather proof - IP67/IP68 Water-proof, ExdIIBT6 Ex-proof - Bolts on visual position Indicator - Switches: 2, 3 or 4 x SPDT mechanical switch or proximity - Cable Entry: 2 x 3/4" NPT (std.). Option: M20, PG13.5, PF1/2", PT1/2" - Terminal Strip: 8 points (0.08 – 2.5mm²), Option: 8-16 points - Easy mounting, Namur standard, stainless steel bracket & bolts
	<p>NTS-F Series, Weather-Proof</p> <ul style="list-style-type: none"> - Enclosure: ABS plastic, weather-proof, IP67/NEMA 4 & 4X - Visual position Indicator - Switches: 2 x SPST magnet reed switch, LED indicator - 0.7 meter lead wire (std.), option: quick coupler - Easy mounting, Namur Standard, stainless steel bracket & bolts

Note: A. Standard Specification: 1. Captive cover bolts. 2. Polyester powder coating (black color).
3. Ambient Temp.: -20 ~ +80°C
B. The other painting & colors are available upon request

Position Monitoring Switchbox | NUTORK®

NTS Valve Position Monitor (Limit Switchbox)

Switches, Wiring and Bracket(NTS-A,C,CP,K, KP,E&H series)

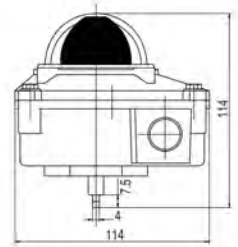
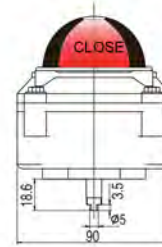
<p>2-SPDT mechanical switches Rating: 16A@125/250VAC, 0.6A@125VDC, 0.3A@250VDC approved by UL, CSA</p>		
<p>4-SPDT mechanical switches Rating: 5A@125/250VAC, 0.2A@125VDC approved by UL, CSA</p>		
<p>2-DPDT mechanical switches Rating : 10A 125 or 250VAC 2A 480VAC 1/8HP 125VAC, 0.25HP 250VAC 0.5A 125VDC, 0.25A 250VDC approved by UL, CSA</p>		
<p>Autonics proximity sensors PS17-5DNU(NPN, PNP), 3-wire Voltage rating : 10~30VDC Sensing distance : 5mm Ambient temperature : -25~+70°C</p>		
<p>P & F proximity sensors NJ2-V3-N(Intrinsic safe, 2-wire) Voltage rating : 8V DC Sensing distance : 2mm Ambient temperature : -25~+100°C</p>		
<p>Potentiometer Providing 0-1K ohm output signal, Options: 0-5K or 10K ohm</p>		
<p>Position Transmitter Providing 4-20mA DC(or 0~1K ohm) output signal as feedback, 15~28VDC loop power(24V DC input power) Load impedance : 0~600 Ohm, Max output : 35mA DC Adjustment : Zero and span</p>		
 <p>SS1~ SS4 Universal Type</p>	<p>Standard bracket provided together with switch box(included)</p> <ol style="list-style-type: none"> 1. SS1 30 x 80 x 20(H) 2. SS2 30 x 80 x 30(H) 3. SS3 30 x 130 x 30(H) 4. SS4 30 x 130 x 50(H) 5. Universal Type 	

Position Monitoring Switchbox | NUTORK®

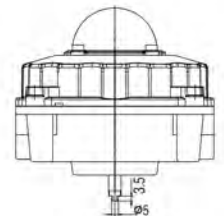
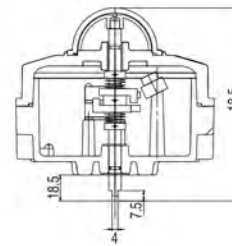
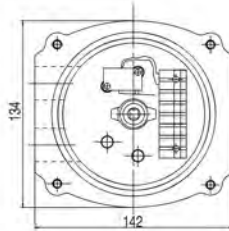
NTS Valve Position Monitor (Limit Switchbox)

Dimension

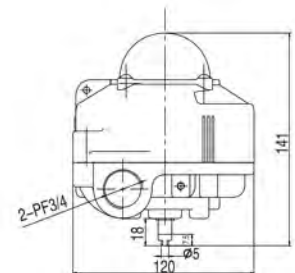
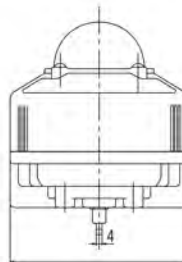
NTS-C/CP Series



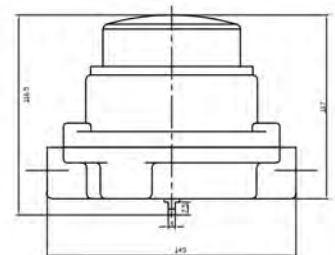
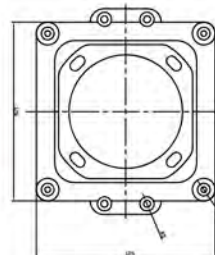
NTS-ES Series



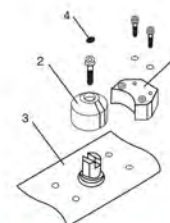
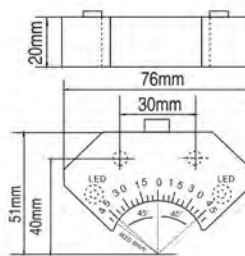
NTS-H Series



NTS-K/KP Series



NTS-F Series



Position Monitoring Switchbox | NUTORK®

NTS Valve Position Monitor (Limit Switchbox)

Ordering Information:

NTS - C - 10 S1

Enclosure Type:

- C series(Aluminum Die-Casting Housing,IP67/Weather-Proof)
- CP series(Aluminum Die-Casting Housing,IP68/Weather-Proof)
Submerged 50Meter@72hrs approved by SGS
- ES series(316SS Housing,IP67/EEExdIIIBT6)
- H series(Aluminum Die-Casting Housing,IP67/EEExdIICT6)
- K series(Aluminum Die-Casting Housing,IP67/EEExdIIIBT6)
- KP series(Aluminum Die-Casting Housing,IP68/Weather-Proof)
Submerged 30Meter@24hrs approved by TUV
- F series(ABS Housing,IP65/Weather-Proof)
- Note: H & K series switchboxes are approved by CE-ATEX
C&H&K series switchboxes are approved by SIL3.

Switch Type:

- Mechanical Switch:
 - 10 - 2xSPDT,mechanical type,16A at 125/250VAC; 0.6A at 125VDC
 - 12 - 4xSPDT,mechanical type,5A at 125/250VAC; 0.2A at 125VDC
 - 13 - 2xDPDT,mechanical type,16A at 125/250VAC; 0.6A at 125VDC
 - 14 - 2xSPDT+Potentiometer(0-5K/10K ohm), NTS-C series is not available
 - 15 - 2xSPDT+Position Transmitter(4-20mADC output),
NTS-C series is not available
- Inductive Proximity Sensor
 - 21 - P&F NJ2-V3-N(2-wire/NC,EEExialICT6,SIL2 approved)
 - 22 - P&F NCB2-V3-N0(2-wire/NC,EEExialICT6,SIL2 approved)
 - 23 - P&F NBN5-F7-E2(3-wire,PNP/NO,IP67)
 - 24 - Autonics PSN17-5DNU/DPU(3-wire/NPN or PNP,IP67)
 - 25 - Nutork Magnet Type Switch, 2xSPST (2-wire, 5-240VAC/DC, ≤500mA)

Bracket Material:

- Blank - S.S. Universal Bracket(Standard) for all Namur Dimension
- S1: 80x30x20 Namur S.S. Bracket
- S2:130x30x30 Namur S.S. Bracket

NUTORK Corp.

China Office
 No.10 Lane 899, Zhuguang Road,
 Qingpu Area, Shanghai, China
 TEL.:+86-21-5988-7103/ 5988-8463/ 5988-8436
 FAX.:+86-21-5988-7203
 Email: nutork@nutork.com
 Website: www.nutork.com