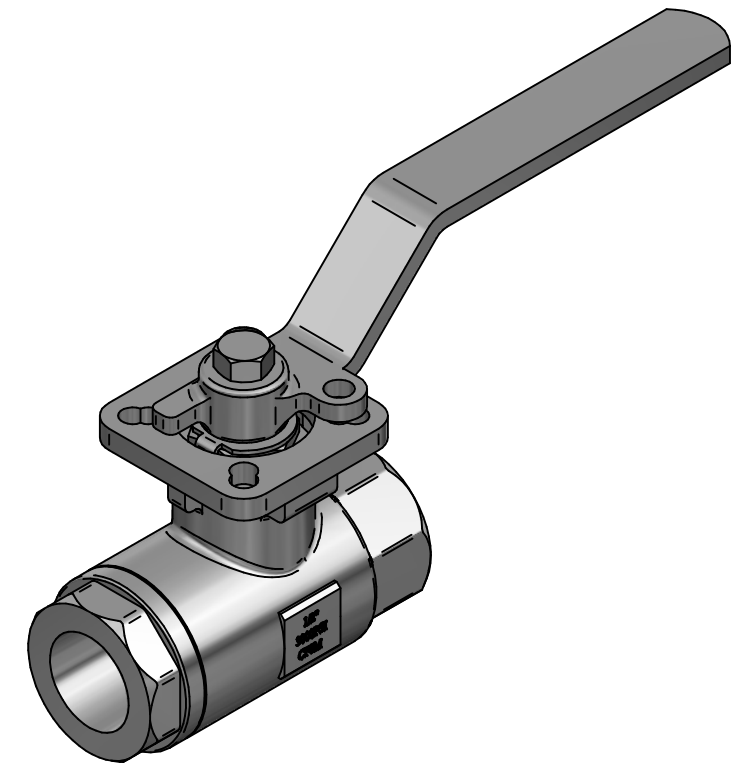


Item Number	Quantity	Material
1	Body	CF8M / WCB
2	End Cap	CF8M / WCB
3	Ball	CF8M
4	Anti Static Stem	SS316
5	Ball Seat	TFM1600   DELRIN
6	Body Seal	PTFE
7	Thrust Washer	PTFE   DELRIN
8	Stem Packing	PTFE
8A	O-ring	VITON
9	Thrust Washer	50%/SS/50%+PTFE
10	Stem Nut	SS304
11	Lock Saddle	SS304
12	Handle	SS304
13	Stop Bolt	SS304
14	Stop Nut	SS304
15	Stop Washer	SS304
16	Handle Bolt	SS304
17	Handle Sleeve	Vinyl



	NAME	DATE	SIZE	DWG NO
DRAWN	EMLA	31.05.2023	<b>A3</b>	MAR00542
CHECKED	TOCO	dd.mm.yyyy	FILE NAME: MAR00542.dft	
ENG APPR	TOCO	dd.mm.yyyy	SCALE: 1:1	REV: 0
MGR APPR	TOCO	dd.mm.yyyy	WEIGHT:	SHEET: 1 OF 1

UNLESS OTHERWISE SPECIFIED DIMENSIONS ARE IN MILLIMETERS AND TOLERANCES ARE +/-0,5

REV	DESCRIPTION	DATE	APPROVED
REVISION HISTORY			

TITLE KULEVENTIL FIG. 24-10 FP BSP 1/2 CF8M - 3000 PSI - SEAT: DELRIN, FULL BORE ISOTOPP, WITH LEVER