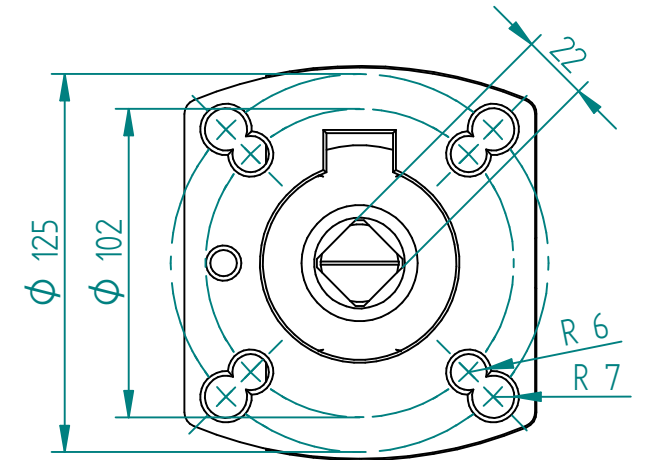


| No. | Part Name         | Material                      | Qty. |
|-----|-------------------|-------------------------------|------|
| 1   | Body              | CF8M                          | 1    |
| 2   | Cap               | CF8M                          | 1    |
| 3   | Ball              | SS 316                        | 1    |
| 4   | Seat              | RPTFE                         | 2    |
| 5   | Joint Gasket      | PTFE                          | 1    |
| 6   | Stem              | SS 316                        | 1    |
| 7   | Stem Seal         | RPTFE                         | 1    |
| 8   | Stem Packing      | PTFE                          | 3    |
| 9   | Stem Packing      | 25% Glass Fiber filled + PTFE | 1    |
| 10  | Gland             | SS 316                        | 1    |
| 11  | Belleville Washer | SUS 301                       | 2    |
| 12  | Lock Saddle       | SS 316                        | 1    |
| 13  | Stem Nut          | SS 316                        | 2    |
| 14  | Stem Washer       | SS 316                        | 1    |
| 15  | Handle            | SS 316                        | 1    |
| 16  | Handle Sleeve     | Vinyl                         | 1    |
| 17  | Stud & Nuts       | SS 316                        | 8    |
| 18  | Bolt              | SS 316                        | 8    |
| 19  | Stop Pin          | SS 316                        | 1    |
| 20  | Pin Nut & Washer  | SS 316                        | 1    |
| 21  | Locking Device    | SS 316                        | 1    |
| 22  | Anti-staic Device | SS 316                        | 2    |
| 23  | O-RING            | VITON                         | 1    |



Dual Patern 1:2,5  
ISO 5211 Mounting Pad



|          |                                                 |            |                  |               |                         |
|----------|-------------------------------------------------|------------|------------------|---------------|-------------------------|
| TITLE    | BALL VALVE MARS 90D-40 F4<br>FULL BORE 4" PN 16 | NAME       | DATE             | SIZE          | DWG NO                  |
|          |                                                 | DRAWN      | MOTO             | 17.06.2014    | A3 MAR00309             |
|          |                                                 | CHECKED    | TOCO             | 23.05.2014    | FILE NAME: MAR00309.dft |
|          |                                                 | ENG APPR   | TOCO             | dd.mm.yyyy    | SCALE: 1:3,45           |
| MGR APPR | TOCO                                            | dd.mm.yyyy | WEIGHT: 27,25 kg | SHEET: 1 OF 1 |                         |

UNLESS OTHERWISE SPECIFIED  
DIMENSIONS ARE IN MILLIMETERS  
AND TOLERANCES ARE +/-0,5

| REV              | DESCRIPTION | DATE | APPROVED |
|------------------|-------------|------|----------|
| REVISION HISTORY |             |      |          |