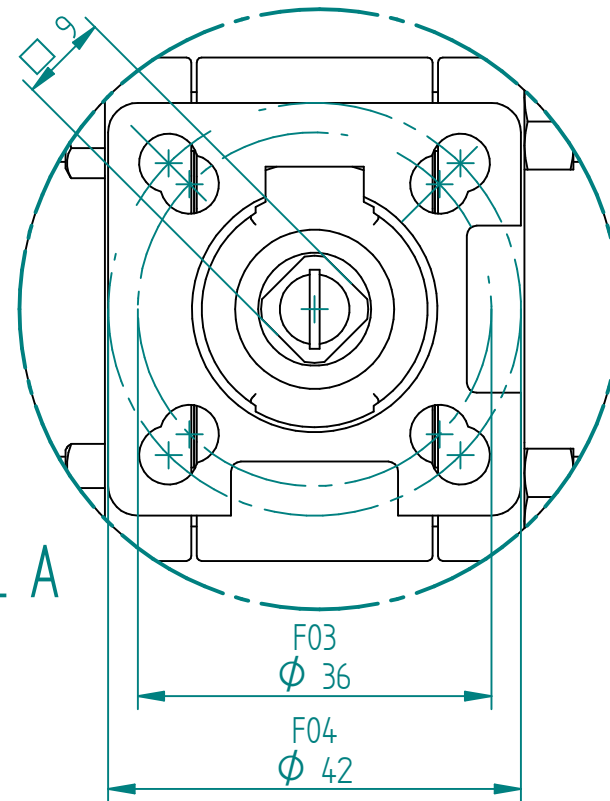
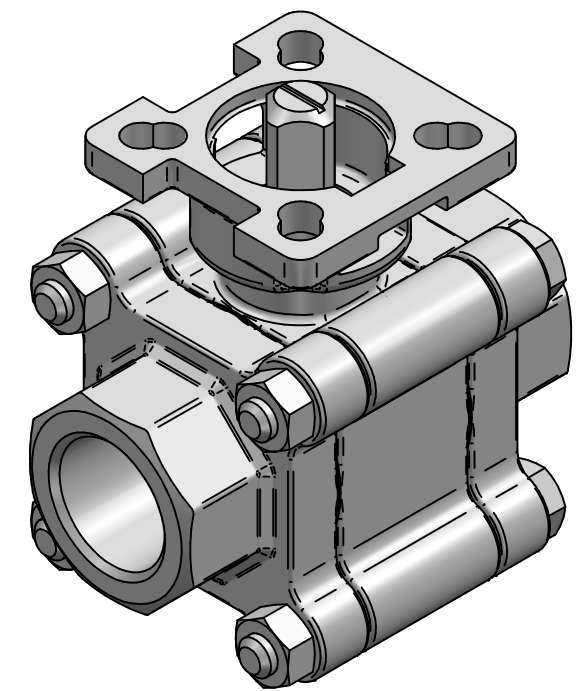


DETAIL A



No.	Part Name	Material	Qty.
1	Body	CF8M	1
2	End Cap	CF8M	2
3	Ball	SS 316	1
4	Stem	SS 316	1
5	Stem Nut	SS 316	1
6	Belleville Washer	SUS 301	2
7	Seat	RPTFE	2
8	Gland	SS 316	1
9	Stem Packing	PTFE	2
10	Stem Seal	RPTFE	1
11	Lock Saddle	SS 316	1
12	Joint Gasket	PTFE	2
13	Bolt	SS 316	4
14	Stop Pin	SS 316	1
15	Bolt Nut	SS 316	4
16	Stem Packing	25% Glass Fiber filled + PTFE	1
17	Locking Device	SS 316	1
18	Pin Nut	SS 316	1
19	Washer	SS 316	1
20	Antistatic - Device	SS 316	2
21	O-RING	VITON	1



TITLE KULEVENTIL FIG. 88-10 BSP GJENGER 1/2
3-DELT ISO, RPTFE SEAT FIRESAFE
O-ring with Kalrez material

	NAME	DATE	SIZE	DWG NO
DRAWN	EMLA	13.06.2023	A3	MAR00143B
CHECKED	TOCO	dd.mm.yyyy	FILE NAME: MAR00143B.dft	
ENG APPR	TOCO	dd.mm.yyyy	SCALE: 1:1	REV: 0
MGR APPR	TOCO	dd.mm.yyyy	WEIGHT:	SHEET: 1 OF 1

UNLESS OTHERWISE SPECIFIED DIMENSIONS ARE IN MILLIMETERS AND TOLERANCES ARE +/-0,5

REV	DESCRIPTION	DATE	APPROVED
REVISION HISTORY			