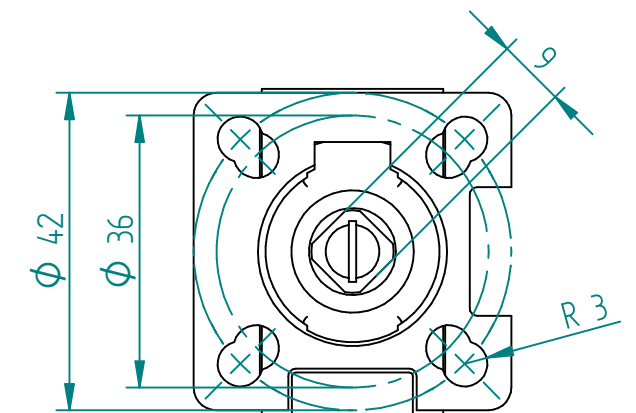


No.	Part Name	Material	Qty.
1	Body	CF8M	1
2	End Cap	CF8M	2
3	Ball	SS 316	1
4	Stem	SS 316	1
5	Stem Nut	SS 316	2
6	Belleville Washer	SUS 301	2
7	Handle	SS 316	1
8	Seat	RPTFE	2
9	Gland	SS 316	1
10	Stem Packing	PTFE	2
11	Stem Seal	RPTFE	1
12	Lock Saddle	SS 316	1
13	Joint Gasket	PTFE	2
14	Bolt	SS 316	4
15	Stop Pin	SS 316	1
16	Handle Sleeve	Vinyl	1
17	Bolt Nut	SS 316	4
18	Stem Washer	SS 316	1
19	Stem Packing	25% Glass Fiber filled + PTFE	1
20	Locking Device	SS 316	1
21	Pin Nut	SS 316	1
22	Washer	SS 316	1
23	Antistatic - Device	SS 316	2
24	O-RING	VITON	1



1:1 Dual Pattern
ISO 5211 Mounting Pad



TITLE	BALL VALVE MARS 88-10 FULL BORE 1/2" PN125 BSP	NAME	DATE	SIZE	DWG NO	UNLESS OTHERWISE SPECIFIED DIMENSIONS ARE IN MILLIMETERS AND TOLERANCES ARE +/-0,5	
		DRAWN	MOTO	18.06.2014	A3		MAR00143
		CHECKED	TOCO	dd.mm.yyyy	FILE NAME: MAR00143.dft		
		ENG APPR	TOCO	dd.mm.yyyy	SCALE: 2:1		REV:
MGR APPR	TOCO	dd.mm.yyyy	WEIGHT: 0,82 kg	SHEET: 1 OF 1			

REV	DESCRIPTION	DATE	APPROVED
REVISION HISTORY			