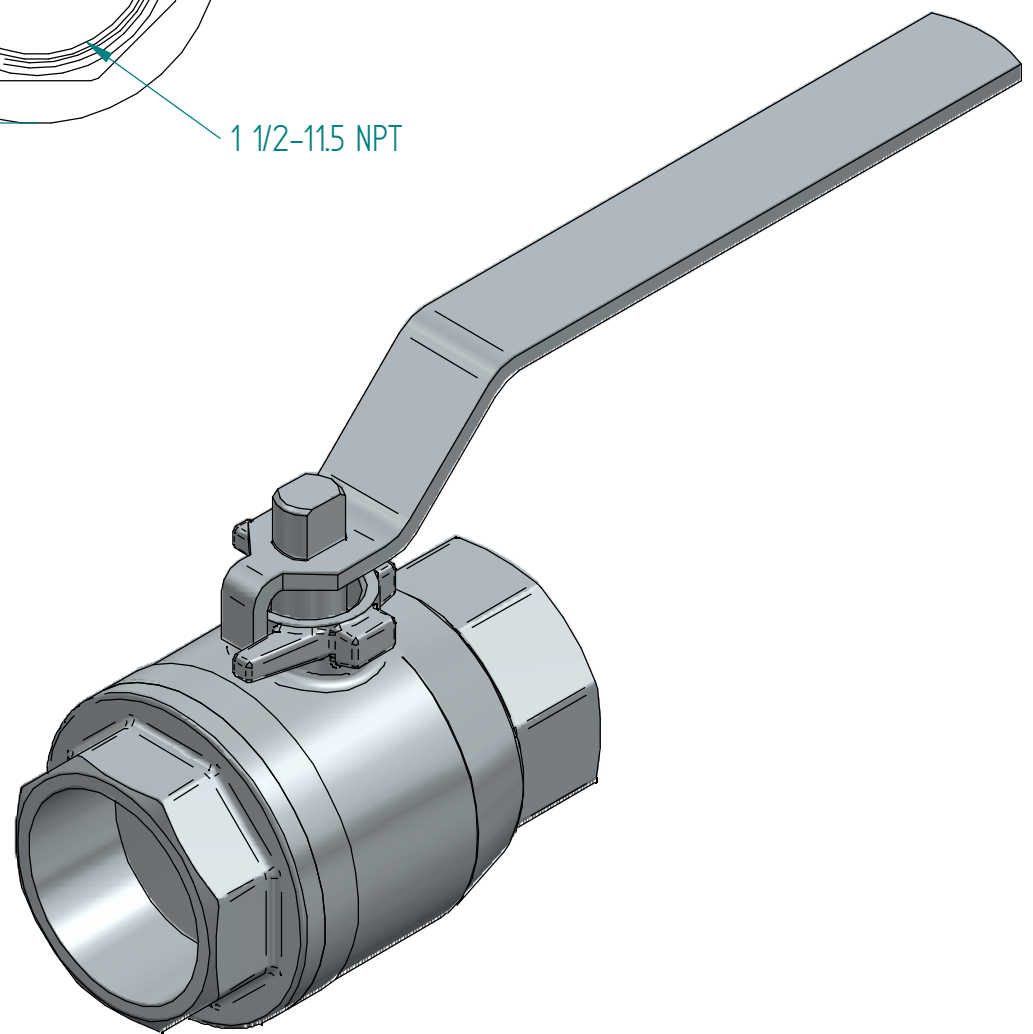


No.	Part Name	Material	Qty.
1	Body	CF8M	1
2	End Cap	CF8M	1
3	Ball	SS 316	1
4	Stem	SS 316	1
5	Stem Nut	SS 304	1
6	Stem Washer	SS 304	1
7	Handle	SS 304	1
8	Seat	PTFE	2
9	Gland Nut	SS 304	1
10	V-Ring Packing	PTFE	2
11	Thrust Washer	PTFE	1
12	Handle Sleeve	Vinyl	1
13	Joint Gasket	PTFE	1
14	*Locking Device	SS 304	1

*Available as an option



		NAME	DATE	SIZE	DWG NO
DRAWN	MOTO	4/5/2016	A3	MAR00017	
CHECKED	TOCO	dd.mm.yyyy	FILE NAME: MAR00017.dft		
ENG APPR	TOCO	dd.mm.yyyy	SCALE: 1:1.5	REV: 01	
MGR APPR	TOCO	dd.mm.yyyy	WEIGHT: 1,82 kg	SHEET: 1 OF 1	

UNLESS OTHERWISE SPECIFIED DIMENSIONS ARE IN MILLIMETERS AND TOLERANCES ARE +/-0,5

TITLE BALL VALVE MARS 20-10 NPT FULL BORE 1 1/2" 1000PSI

REV	DESCRIPTION	DATE	APPROVED
01	Revised partslist	18.06.2024	RAGA

REVISION HISTORY