

**General description**

High quality industrial 3-pcs ball valve • Unique stuffing box ensuring long and reliable service • Direct mount of actuators • Food grade materials used throughout the valve

**Connections**

Butt weld ends, ISO1127, and BSPP threaded ends.

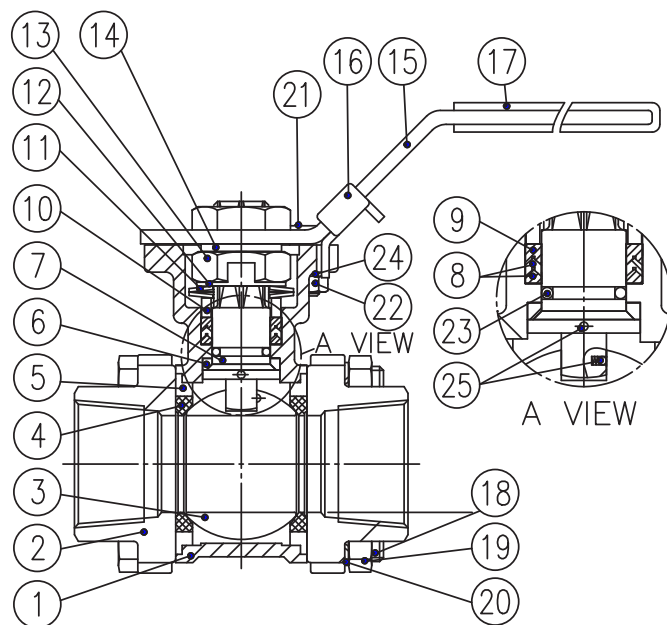
**Usable for**

Water, air, steam, oil etc.

**Options (on request)**

Body, flanges: WCB  
 Seat rings: RTFE, CTFE, TFM1600 i.a.  
 Connections: NPT, ASME, "rotating welding ends"

**Parts description**



**Pressure rating**

DN10-DN50: 69bar / 1000psi  
 DN65-DN100: 55bar / 800psi

**Accessories**

Closed stem extension, without stuffing box  
 Handle with position indication, lockable  
 Position indication, handle operated (inductive or mechanic)



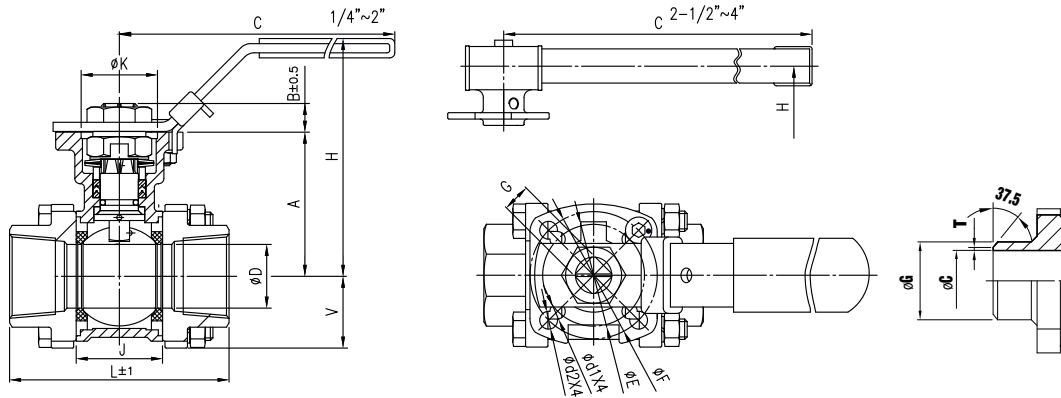
**Parts**

Pos	Description	Material
1	Body	Stainless Steel CF8M
2	Connection	Stainless Steel CF8M
3	Ball	Stainless Steel CF8M
4	Seat	PTFE
5	Joint gasket / support ring	PTFE
6	Pyramid segment	PTFE
7	Stem	Stainless Steel AISI316
8	Stem seal V-ring	PTFE
9	Stem seal top ring	RTFE (25%Glass 75%PTFE)
10	Gland	Stainless steel AISI304
11	Belleville washer	Stainless steel AISI301
12	Locking saddle	Stainless steel AISI304
13	Stem nut	Stainless steel AISI304
14	Washer	Stainless steel AISI304
15	Handle	Stainless steel AISI304
16	Locking device	Stainless steel AISI304
17	Handle	Vinyl
18	Body bolts	Stainless steel AISI304
19	Nut	Stainless steel AISI304
20	Locking washer	Stainless steel AISI304
21	Stop bolt	Stainless steel AISI304
22	Nut	Stainless steel AISI304
23	O-ring	PPM
24	Washer	Stainless steel AISI304
25	Antistatic device	Stainless steel AISI316

**Spare parts**

Complete kit/set of gaskets  
 Seat rings  
 Joint (body) gaskets  
 Ball

• **Dimensions**



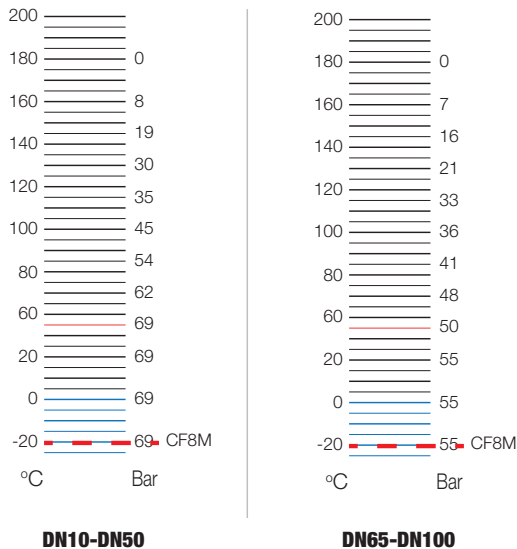
DIM [mm]	ØD	A	B	C	øK	øE	øF	G	L	H	J	V	ød1	ød2	ISO5211
1/4"	11.6	42.1	6.1	139	25	36	42	9	63.7	77	23.6	23.3	6	6	F03/F04
3/8"	12.7	42.1	6.1	139	25	36	42	9	63.7	77	23.6	23.3	6	6	F03/F04
1/2"	15.0	42.1	6.1	139	25	36	42	9	65.7	77	23.6	23.3	6	6	F03/F04
3/4"	20.0	48.0	10.9	139	25	36	42	9	76.2	83	28.0	25.4	6	6	F03/F04
1"	25.0	56.6	10.9	165	30	42	50	11	86.2	96	33.9	28.3	6	7	F04/F05
1-1/4"	32.0	60.9	13.9	165	30	42	50	11	102.8	100	42.5	34.5	6	7	F04/F05
1-1/2"	38.0	77.5	13.9	215	35	50	70	14	119.4	127	53.2	39.3	7.5	9	F05/F07
2"	50.0	85.2	16.8	215	35	50	70	14	131.4	134	64.6	47.3	7.5	9	F05/F07
2-1/2"	65.0	108.7	17.8	300	55	70	102	17	164.0	167	87.0	58.5	10	12	F07/F10
3"	80.0	117.7	17.8	370	55	70	102	17	182.7	176	99.0	69.0	10	12	F07/F10
4"	100.0	135.6	17.8	370	55	70	102	17	235.6	192	127.0	95.4	10	12	F07/F10

Welding	DIM Thread BSPP	*) Torque [Nm]		Weight [Kg]	Kv-value [m3/h] 90°	Butt weld end CF3M ISO 1127 ØG x T (ØC)
		No pressure				
	DN10 1/4"	5,4		0,8	6,9	13.5 x 1.6 (10.3)
	DN15 1/2"	5,4		0,9	10,3	21.3 x 1.6 (18.1)
	DN20 3/4"	5,4		0,9	27,5	26.9 x 1.6 (23.7)
	DN25 1"	6,2		1,3	48,2	33.7 x 2.0 (29.7)
	DN32 1 1/4"	10,8		2,0	70,5	42.4 x 2.0 (38.4)
	DN40 1 1/2"	13,1		2,9	103,2	48.3 x 2.0 (44.3)
	DN50 2"	25,4		3,5	207,0	60.3 x 2.6 (55.1)
	DN65 2 1/2"	43,1		7,9	275,0	76.1 x 2.6 (70.9)
	DN80 3"	65,4		11,9	499,0	88.9 x 2.6 (83.7)
	DN100 4"	87,7		21,2	877,0	114.3 x 2.6 (109.1)

\*) Torques are listed without safety factor at 20°C. See section below for actuator sizing.

• **Temperature vs. pressure table for PTFE seats**

Valid for fluids and dry gasses. For steam and similar services, contact Mars Valve Europe A/S.



• **Actuator sizing**

Media factor	Multiply by
Clean, particle free, lubricating (oil, hydraulic fluids, etc)	1.00
Clean, particle free, non-lubricating (water, alcohol, etc)	1.20
Moist gas or saturated steam	1.20
Dry gas or superheated steam	1.40
Gas, dirty unfiltered i.e. Natural gas	1.50
Particle filled, corrosive, solvents and poluted systems	2.00 #
Service factor	Multiply by
Simple on / off maneuvering	1.00
Regulating / throttling	1.20
Maneuvering once per week	1.20
Maneuvering every second week or critical component	1.50

For actuator dimensioning : **Torque x Media factor x Service factor**  
 # Poluted systems will reduce the expected life span of the seat rings

**MARS VALVE EUROPE**

Mars Valve Europe A/S  
 Ferrarivej 12  
 DK-7100 Vejle

Phone: +45 65 99 7000  
 Mail: info@mve.as  
 Web.: www.mve.as