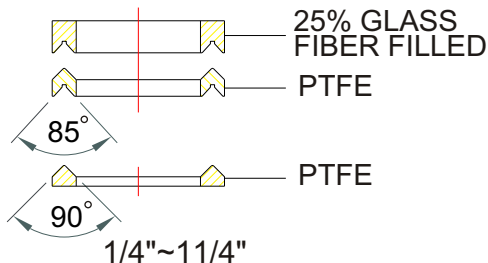
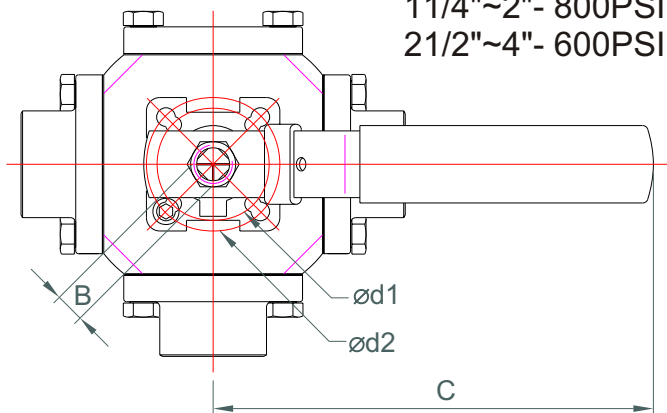




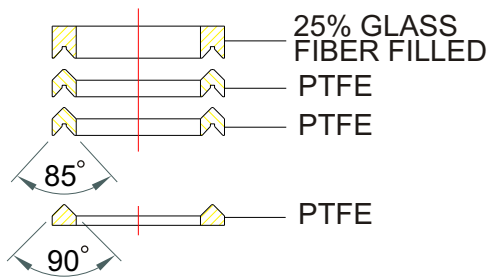
SERIES 33

3-Way Ball Valve
Full Bore, L & T-Port
ISO 5211 Mounting Pad
1/4" (DN8) to 2 1/2" (DN65)

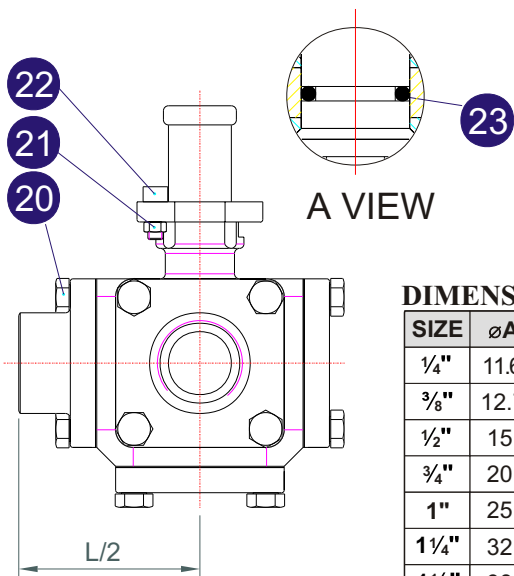
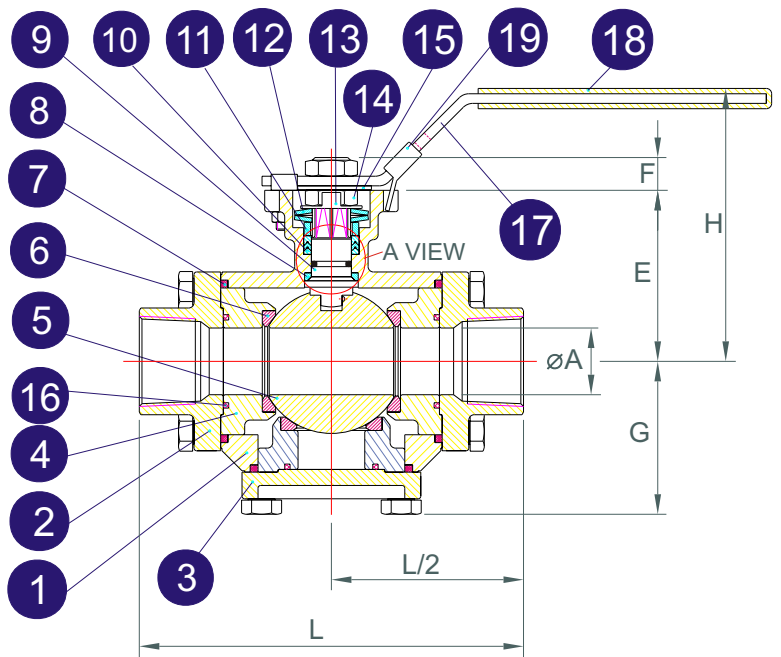
1/4"~1"-1000PSI
1 1/4"~2"- 800PSI
2 1/2"~4"- 600PSI



1/4"~1 1/4"
GLAND PACKING



1 1/2"~2 1/2"
GLAND PACKING



MATERIALS LIST

NO.	PART NAME	MATERIAL	Q'TY
1	Body	CF8M / WCB	1
2	End Cap-A	CF8M / WCB	3
3	End Cap-B	CF8M / WCB	2
4	Seat Retainer	ASTM A351 Gr. CF8M	5
5	Ball	SUS316	1
6	Seat	PTFE/RTFE	5
7	Joint Gasket	PTFE	5
8	Stem Seal	PTFE	1
9	Stem	SUS316	1
10	Gland Packing	25% Glass Fiber Filled +PTFE	1 SET
11	Gland Bush	SUS 304	1
12	Belleville Washer	SUS 301	2
13	Stop Washer	SUS 304	1
14	Stem Nut	SUS 304	2
15	Stem Washer	SUS 304	1
16	Retainer Seal	PTFE	5
17	Handle	SUS 304	1
18	Handle Sleeve	VINYL	1
19	Locking Device	SUS 304	1
20	Bolt Nut	SUS 304	20
21	Pin Nut	SUS 304	1
22	Stop Pin	SUS 304	1
23	O-Ring	VITON	1

DIMENSIONS (mm)

SIZE	øA	B	C	E	F	G	H	L	ød1	ød2	W(kg)	ISO5211
1/4"	11.6	9	150	43.9	9	35.1	85	92	36	42	1.4	F03/F04/F05
3/8"	12.7	9	150	43.9	9	35.1	85	92	36	42	1.4	F03/F04/F05
1/2"	15	9	150	43.9	9	35.1	85	92	36	42	1.3	F03/F04/F05
3/4"	20	11	165	54.2	10.5	45.3	93	110	42	50	2.81	F04/F05
1"	25	11	213	64.1	10.5	56.8	108	144	42	50	4.76	F04/F05/F07
1 1/4"	32	14	263	78.5	13	59.8	127	146	50	70	5.75	F05/F07
1 1/2"	38	17/19	263	94.9	18.0	72.3	152	164	70	102	10.56	F07/F10
2"	50	17/19	313	101.6	18.0	80.5	159	184	70	102	13.42	F07/F10
2 1/2"	65	17/19	344	120	18.0	96.8	177	236	70	102	21.31	F07/F10

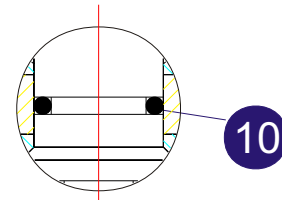


SERIES 33

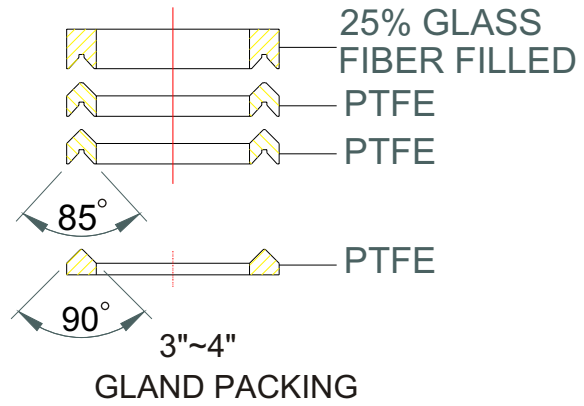
3-Way Ball Valve
Full Bore, L & T-Port
ISO 5211 Mounting Pad
3"(DN80) & 4" (DN100)

MATERIALS LIST

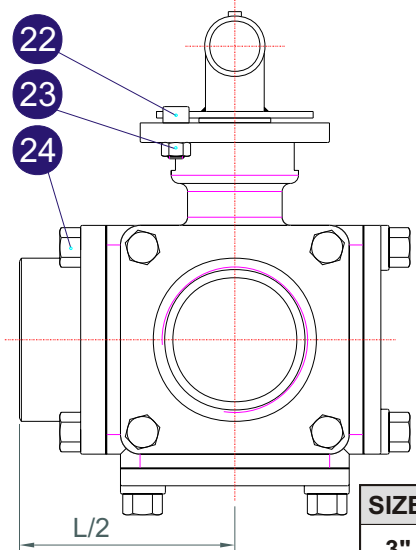
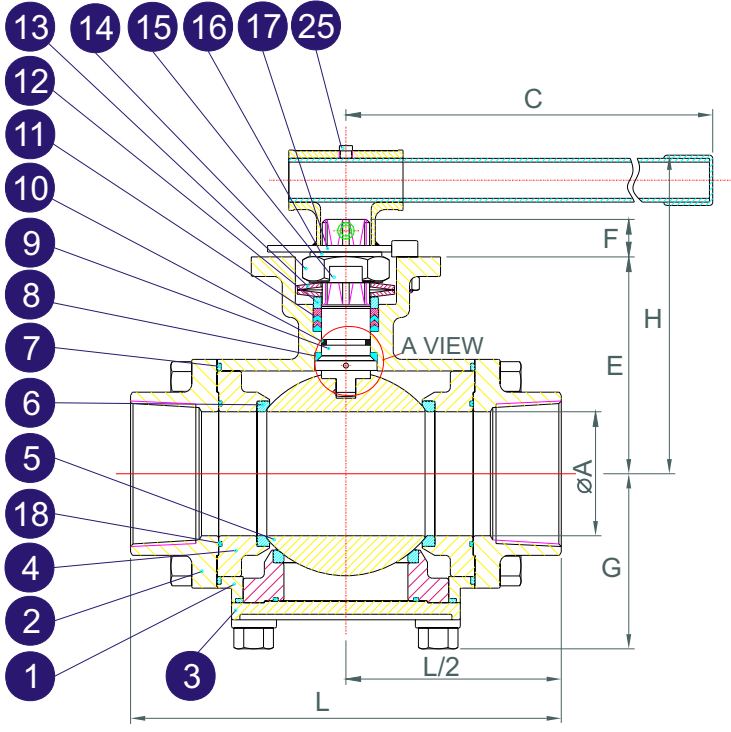
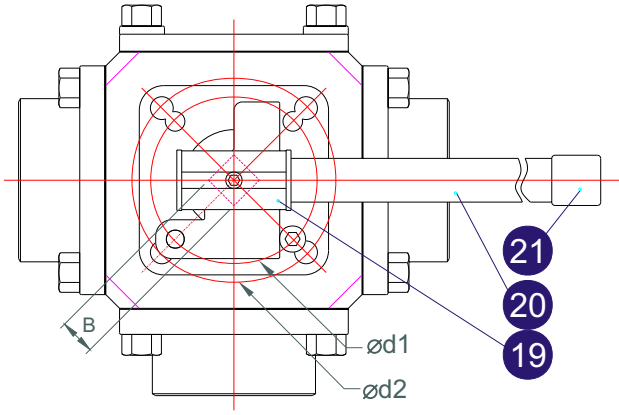
NO.	PART NAME	MATERIAL	Q'TY
1	Body	CF8M / WCB	1
2	End Cap-A	CF8M / WCB	3
3	End Cap-B	CF8M / WCB	2
4	Seat Retainer	ASTM A351 Gr. CF8M	5
5	Ball	SUS316	1
6	Seat	PTFE/RTFE	5
7	Joint Gasket	PTFE	5
8	Stem Seal	PTFE	1
9	Stem	SUS316	1
10	O-RING	VITON	1
11	Gland Packing	25% Glass Fiber Filled +PTFE	1 SET
12	Gland Bush	SUS 304	1
13	Belleville Washer	SUS 301	2
14	STEM NUT	SS304	1
15	STOP WASHER	SS304	1
16	STEM WASHER	SS304	1
17	LOCKING PLATE	SS304	1
18	RETAINER SEAL	PTFE	5
19	HANDLE-A	SS304	1
20	HANDLE-B	SS304	1
21	HANDLE SLEEVE	VINYL	1
22	STOP PIN	SS304	1
23	PIN NUT	SS304	1
24	BOLT NUT	SS304	20
25	HANDLE NUT	SS304	2



A VIEW



GLAND PACKING



DIMENSIONS (mm)

SIZE	øA	B	C	E	F	G	H	L	ød1	ød2	W(kg)	ISO5211
3"	76	22	365	132.9	23	105	195	265	102	125	28.85	F10/F12
4"	100	22	510	164	23	131.5	226	320	102	125	57.51	F10/F12

1/4"~1"-1000PSI
1 1/4"~2"- 800PSI
2 1/2"~4"- 600PSI