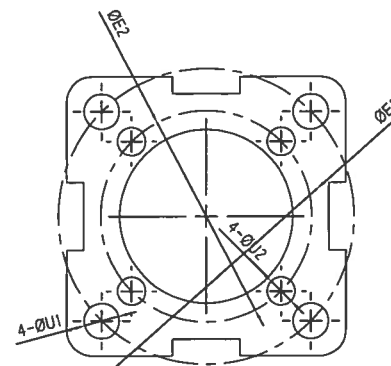


Nominal Pressure	4.0	MPa
Shell Test (By Water)	6	
Seal Test (By Water)	4.4	
Seal Test (By Air)	0.6	

NO.	Part Name	Material
1	BODY	SS316
2	Bonnet	SS316
3	Bolting	SS304
4	Ball	SS316
5	Seat	PTFE
6	Gasket	PTFE
7	Stem	SS316
8	Stem Packing	PTFE
9	Gland Screw	SS304
10	Handle	SS420

**APPLICABLE STANDARDS:**

1. BASIC DESIGN: DIN 3357
2. FLANGED: DIN 2501
3. FACE TO FACE: DIN 3202 F4
4. VALVES TEST AND INSPECT: ISO 5208



<b>SS VALVE</b>	
	<b>DIN BALL VALVE</b>
YONGKANG LIANGGONG VALVE CO.,LTD	

SIZE	$\phi d$	L	$\phi R$	$\phi D$	$\phi C$	f	b	N	$\phi h$	$\phi E1$	$\phi E2$	$\phi U1$	$\phi U2$	M	H
DN40	40	140	88	150	110	3	18	4	18	70	50	9	7	200	104