




A line of ball valves and ideas



 Multi-way ball valves	69
• with floating ball	72
• with threaded connector	
• as combination (see 2-way ball valves)	36
• with SAE-flange connection	78
• for manifold mounting	80
• for manifold insertion as cartridge type	82
• with trunnion ball	84
• with threaded connector	
• as combination	92
• for manifold mounting	94



Multi-way ball valves



with floating ball



with trunnion ball

Multi-way ball valves

Standard- and special porting patterns



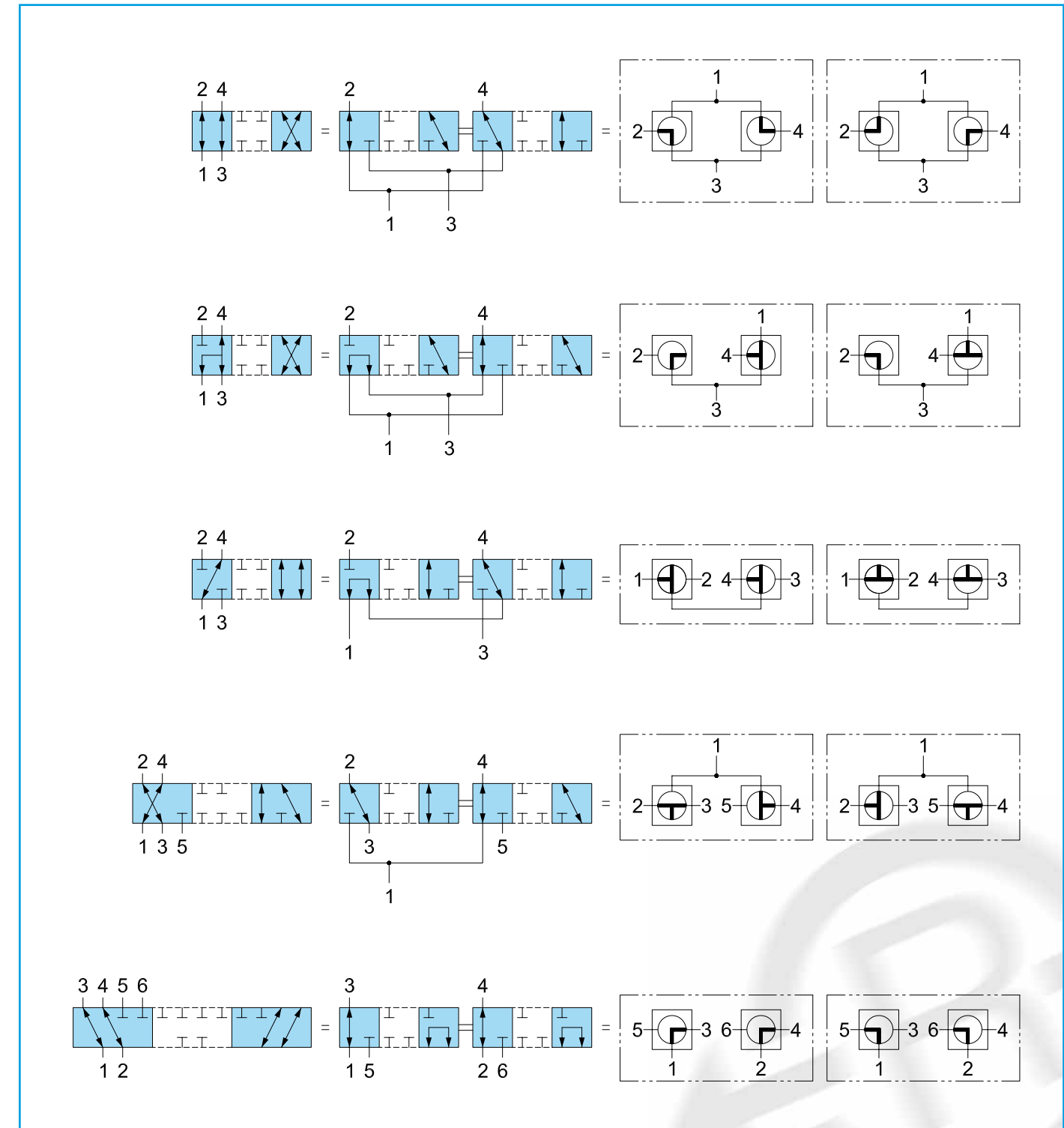
Ref-No.	Ball valve style	Cycling	Porting symbols	Descriptions
01	3-way compact ball valve with L-bore	90°		Floating ball, all ports connected in the cross-over position, pressure should not be applied from the closed port
03	3-way compact ball valve with T-bore	90°		Floating ball, all ports connected in the cross-over position, pressure should not be applied from the closed port
08	3-way ball valve with L-bore	90°		Trunnion ball, all ports closed in the cross-over position, full bore
09	3-way ball valve with T-bore	90°		Trunnion ball, all ports closed in the cross-over position, full bore
10	3-way ball valve with T-bore	2 x 90°		Trunnion ball, all ports closed in the cross-over position, full bore, detent at center position is recommended
11	4-way ball valve with L-bore	90°		Trunnion ball, all ports closed in the cross-over position, full bore
12	4-way ball valve with L-bore	2 x 90°		Trunnion ball, all ports closed in the cross-over position, full-bore, detent at center position is recommended
13	4-way ball valve with double L-bore	90°		Trunnion ball, temporary connection of all ports in the cross-over position but with full shut-off at center point, reduced bore
14	4-way ball valve with double L-bore and additional bore	2 x 45°		Trunnion ball, all ports connected in the cross-over position with center shut-off position, reduced bore, detent for center position is recommended
15	4-way ball valve with double L-bore and additional bore	2 x 45°		Trunnion ball, all ports connected in the cross-over position, reduced bore, detent for center position is recommended
16	4-way ball valve with Y-bore	2 x 45°		Trunnion ball, all ports connected in the cross-over position, reduced bore, detent for center position is recommended
17	5-way ball valve with double L-bore perpendicular	3 x 90°		Trunnion ball, all ports closed, full-bore passage, detents for switching positions are recommended
18	4-way ball valve with T- and L-bore	45°		Trunnion ball, all ports connected in the cross-over position, reduced bore
19	4-way ball valve with double L-bore and additional bore	45°		Trunnion ball, all ports connected in the cross-over position, reduced bore
20	3-way ball valve with L-bore and additional bore	90°		Trunnion ball, all ports connected in the cross-over position, full bore
21	3-way ball valve with T-bore and additional bore	2 x 45°		Trunnion ball, all ports connected in the cross-over position, reduced bore
22	3-way ball valve with L-bore and additional bore	45°		Trunnion ball, all ports connected in the cross-over position, reduced bore

Other special porting patterns on request

Multi-way ball valves

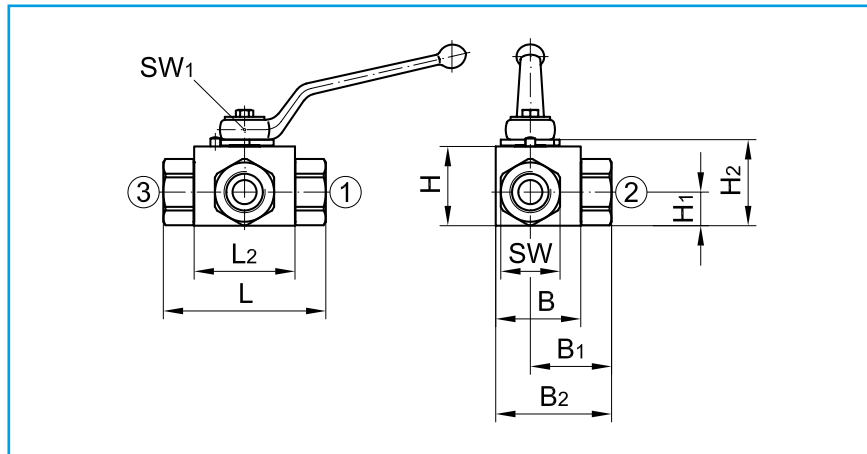
Special porting patterns · examples for combinations

By combining simple patterns more complex functions can be achieved.

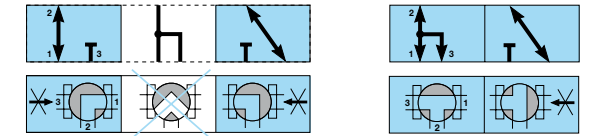


Multi-way ball valves with floating ball

3-way · steel · threaded connector · DN 4 - DN 40/25



Handle included in delivery. For handle refer to "Attachments, accessories"
 ✦ Application of pressure only as indicated in chapter "Technical information"
 Please check pressure rating of the pipe fittings!
 Actuators and custom orders on request
 All dimensions subject to change without notice
 Also available with most other connections
 All ball valves available with mounting plate



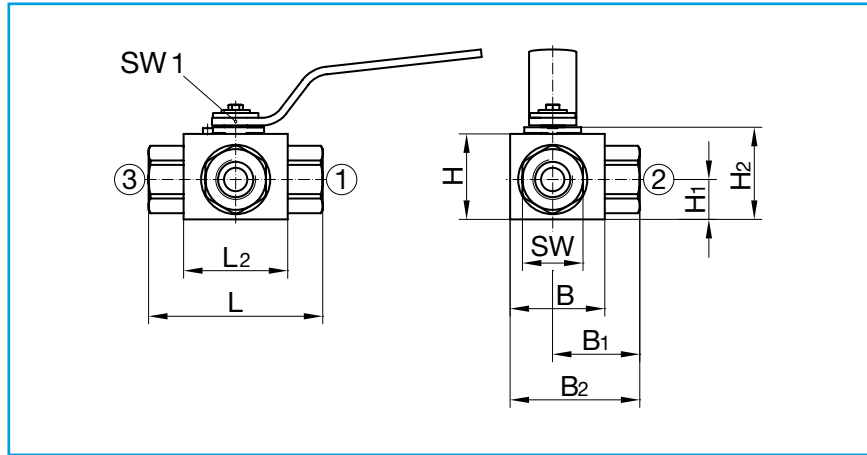
Dimensions in mm
 Weight in kg
 Pressure in bar

Bore:	L	T
Cycling:	90°	90°
Body:	steel	steel
Ball:	steel, hard chrome plated	steel, hard chrome plated
Stem:	steel	steel
Ball seats:	POM	POM
Stem seals:	NBR	NBR

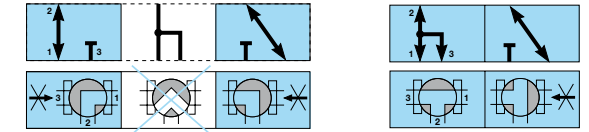
Connection	DN	Thread D	RA	L	L ₁	L ₂	B	B ₁	B ₂	H	H ₁	H ₂	SW	SW ₁	Handle Code	Weight	DN	PN	Article-No.	PN	Article-No.
For cut (clamp) ring tube fittings DIN 2353 light series ISO 8434-1	4	M12 x 1,5	6	67	10	36	30	33,5	45,5	30	15,0	32,5	19	7	1	0,32	4	500	200 151	500	200 191
	6	M14 x 1,5	8	67	10	36	30	33,5	45,5	30	15,0	32,5	19	7	1	0,32	6	500	200 152	500	200 192
	8	M16 x 1,5	10	75	11	45	40	37,5	55,0	35	14,5	38,5	24	8	2	0,55	8	500	200 153	500	200 193
	10	M18 x 1,5	12	75	11	45	40	37,5	55,0	35	14,5	38,5	24	8	2	0,55	10	500	200 154	500	200 194
	12	M22 x 1,5	15	83	12	51	45	41,5	61,0	45	22,0	48,5	30	10	3	0,89	12	500	200 155	500	200 195
	16	M26 x 1,5	18	82	12	50	50	41,0	66,0	50	25,0	53,5	36	10	3	1,05	16	400	200 156	400	200 196
	20	M30 x 2	22	99	14	60	55	51,0	74,5	60	29,0	64,0	41	14	53	1,61	20	400	200 157	400	200 197
	25	M36 x 2	28	108	14	70	65	54,0	84,0	65	31,0	69,0	50	14	53	2,27	25	400	200 158	400	200 198
	32/25	M45 x 2	35	116	16	70	65	58,0	88,0	65	31,0	69,0	50	14	53	2,48	32/25	400	200 159	400	200 199
	40/25	M52 x 2	42	121	16	70	65	60,5	90,5	65	31,0	69,0	55	14	53	2,60	40/25	400	200 160	400	200 200
For cut (clamp) ring tube fittings DIN 2353 heavy series ISO 8434-1	4	M16 x 1,5	8	73	12	36	30	36,5	48,5	30	15,0	32,5	19	7	1	0,35	4	500	200 161	500	200 201
	6	M18 x 1,5	10	73	12	36	30	36,5	48,5	30	15,0	32,5	19	7	1	0,35	6	500	200 162	500	200 202
	8	M20 x 1,5	12	77	12	46	40	38,5	56,0	35	14,5	38,5	24	8	2	0,57	8	500	200 163	500	200 203
	10	M22 x 1,5	14	81	14	45	40	40,5	58,0	35	14,5	38,5	24	8	2	0,57	10	500	200 164	500	200 204
	12	M24 x 1,5	16	87	14	51	45	43,5	63,0	45	22,0	48,5	30	10	3	0,91	12	500	200 165	500	200 205
	16	M30 x 2	20	90	16	50	50	45,0	70,0	50	25,0	53,5	36	10	3	1,12	16	400	200 166	400	200 206
	20	M36 x 2	25	107	18	60	55	55,0	78,5	60	29,0	64,0	41	14	53	1,72	20	400	200 167	400	200 207
	25	M42 x 2	30	120	20	70	65	60,0	90,0	65	31,0	69,0	50	14	53	2,44	25	400	200 168	400	200 208
	32/25	M52 x 2	38	134	22	70	65	67,0	97,0	65	31,0	69,0	55	14	53	2,95	32/25	400	200 169	400	200 209
	BSP-female thread DIN EN ISO 228-1	4	G 1/8	-	69	12	36	30	34,5	46,5	30	15,0	32,5	19	7	1	0,37	4	500	200 171	500
6		G 1/4	-	69	12	36	30	34,5	46,5	30	15,0	32,5	19	7	1	0,34	6	500	200 172	500	200 212
10		G 3/8	-	73	14	45	40	36,5	54,0	35	14,5	38,5	24	8	2	0,57	10	500	200 173	500	200 213
12		G 1/2	-	82	15	51	45	41,0	60,5	45	22,0	48,5	30	10	3	0,94	12	500	200 174	500	200 214
16		G 5/8	-	88	18	50	50	44,0	69,0	50	25,0	53,5	36	10	3	1,24	16	400	200 175	400	200 215
20		G 3/4	-	93	18	60	55	48,0	71,5	60	29,0	64,0	41	14	53	1,72	20	400	200 176	400	200 216
25		G1	-	115	18	70	65	57,5	87,5	65	31,0	69,0	50	14	53	2,65	25	400	200 177	400	200 217
32/25		G1 1/4	-	134	20	70	65	67,0	97,0	65	31,0	69,0	50	14	53	2,71	32/25	400	200 178	400	200 218
40/25		G1 1/2	-	139	22	70	65	69,5	99,5	65	31,0	69,0	55	14	53	2,91	40/25	400	200 179	400	200 219
NPT-female thread ANSI/ASME B1.20.1-1983		4	1/8 - 27 NPT	-	69	6,9	36	30	34,5	46,5	30	15,0	32,5	19	7	1	0,37	4	500	200 181	500
	6	1/4 - 18 NPT	-	69	10,0	36	30	34,5	46,5	30	15,0	32,5	19	7	1	0,34	6	500	200 182	500	200 222
	10	3/8 - 18 NPT	-	73	10,3	45	40	36,5	54,0	35	14,5	38,5	24	8	2	0,57	10	500	200 183	500	200 223
	12	1/2 - 14 NPT	-	82	13,6	51	45	41,0	60,5	45	22,0	48,5	30	10	3	0,94	12	500	200 184	500	200 224
	20	3/4 - 14 NPT	-	93	14,1	60	55	48,0	71,5	60	29,0	64,0	41	14	53	1,75	20	400	200 185	400	200 225
	25	1 - 11 1/2 NPT	-	115	16,8	70	65	57,5	87,5	65	31,0	69,0	50	14	53	2,71	25	400	200 186	400	200 226
	32/25	1 1/4 - 11 1/2 NPT	-	134	17,3	70	65	67,0	97,0	65	31,0	69,0	50	14	53	2,79	32/25	400	200 187	400	200 227
	40/25	1 1/2 - 11 1/2 NPT	-	139	17,3	70	65	69,5	99,5	65	31,0	69,0	55	14	53	2,94	40/25	400	200 188	400	200 228

Multi-way ball valves with floating ball

3-way · stainless steel · threaded connector · DN 4 - DN 25



Handle included in delivery. For handle refer to "Attachments, accessories".
 ✦ Application of pressure only as indicated in chapter "Technical information"
 Please check pressure rating of the pipe fittings!
 Full-PTFE-version, actuators and custom orders on request
 Stainless steel (material no. 1.4571 - or other stainless steels)
 All ball valves available with mounting plate. Also available with most other connections
 All dimensions subject to change without notice



Dimensions in mm
 Weight in kg
 Pressure in bar

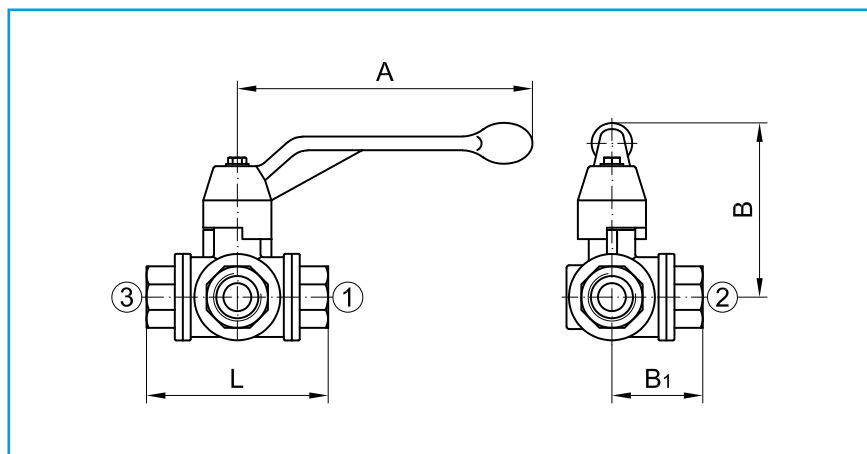
Bore:	L	T
Cycling:	90°	90°
Body:	stainless steel	stainless steel
Ball:	stainless steel	stainless steel
Stem:	stainless steel	stainless steel
Ball seats:	POM	POM
Stem seals:	NBR	NBR

Connection	DN	Thread D	RA	L	L ₁	L ₂	B	B ₁	B ₂	H	H ₁	H ₂	SW	SW ₁	Handle Code	Weight
For cut (clamp) ring tube fittings DIN 2353 light series ISO 8434-1	4	M12 x 1,5	6	73	10	41	35	36,5	51,1	35	18,7	38,5	22	7	26	0,47
	6	M14 x 1,5	8	73	10	41	35	36,5	51,1	35	18,7	38,5	22	7	26	0,50
	8	M16 x 1,5	10	87	11	53	45	43,5	62,3	45	23,0	49,5	30	8	27	0,98
	10	M18 x 1,5	12	87	11	53	45	43,5	62,3	45	23,0	49,5	30	8	27	0,98
	12	M22 x 1,5	15	91	12	55	50	45,8	68,3	50	26,0	54,5	32	10	28	1,23
	16	M26 x 1,5	18	101	12	65	60	52,5	78,0	60	26,0	65,0	46	14	29	2,50
	20	M30 x 2	22	105	14	65	60	54,5	80,0	60	26,0	65,0	46	14	29	2,57
25	M36 x 2	28	112	14	71	70	58,5	90,5	70	33,0	75,0	50	14	29	3,19	
For cut (clamp) ring tube fittings DIN 2353 heavy series ISO 8434-1	4	M16 x 1,5	8	76	12	41	35	38,0	52,6	35	18,7	38,5	22	7	26	0,49
	6	M18 x 1,5	10	76	12	41	35	38,0	52,6	35	18,7	38,5	22	7	26	0,49
	8	M20 x 1,5	12	89	12	53	45	44,5	63,3	45	23,0	49,5	30	8	27	1,01
	10	M22 x 1,5	14	93	14	53	45	46,5	65,3	45	23,0	49,5	30	8	27	1,02
	12	M24 x 1,5	16	96	14	55	50	48,3	70,8	50	26,0	54,5	32	10	28	1,25
	16	M30 x 2	20	101	16	65	60	56,5	82,0	60	26,0	65,0	46	14	29	2,60
	20	M36 x 2	25	113	18	65	60	58,5	84,0	60	26,0	65,0	46	14	29	2,66
25	M42 x 2	30	124	20	71	70	64,5	96,5	70	33,0	75,0	50	14	29	3,31	
BSP-female thread DIN EN ISO 228-1	4	G 1/8	-	69	11	41	35	34,5	49,1	35	18,7	38,5	22	7	26	0,52
	6	G 1/4	-	75	14	41	35	37,5	52,1	35	18,7	38,5	22	7	26	0,53
	10	G 3/8	-	86	14	53	45	43,0	61,8	45	23,0	49,5	30	8	27	1,09
	12	G 1/2	-	92	16	55	50	46,3	68,8	50	26,0	54,5	32	10	28	1,33
	16	G 5/8	-	111	19	65	60	57,5	83,0	60	26,0	65,0	46	14	29	2,80
	20	G 3/4	-	111	20	65	60	57,5	83,0	60	26,0	65,0	46	14	29	2,87
25	G1	-	122	22	71	70	63,5	95,5	70	33,0	75,0	50	14	29	3,54	
NPT-female thread ANSI/ASME B1.20.1-1983	4	1/8 - 27 NPT	-	82	6,9	41	35	41,0	55,6	35	18,7	38,5	22	7	26	0,54
	6	1/4 - 18 NPT	-	82	10,0	41	35	41,0	55,6	35	18,7	38,5	22	7	26	0,54
	10	3/8 - 18 NPT	-	95	10,3	53	45	47,5	66,3	45	23,0	49,5	30	8	27	1,11
	12	1/2 - 14 NPT	-	108	13,6	55	50	54,3	76,8	50	26,0	54,5	32	10	28	1,39
	20	3/4 - 14 NPT	-	111	14,1	65	60	57,5	83,0	60	26,0	65,0	46	14	29	2,87
	25	1 - 11 1/2 NPT	-	122	16,8	71	70	63,5	95,5	70	33,0	75,0	50	14	29	3,54

DN	PN	Article-No.	PN	Article-No.
4	500	201 140	500	201 169
6	500	201 141	500	201 170
8	500	201 142	500	201 171
10	500	201 143	500	201 172
12	500	201 144	500	201 173
16	315	201 198	315	201 199
20	315	201 146	315	201 175
25	315	201 147	315	201 176
4	500	201 148	500	201 177
6	500	201 149	500	201 178
8	500	201 150	500	201 179
10	500	201 151	500	201 180
12	500	201 152	500	201 181
16	315	201 136	315	201 137
20	315	201 154	315	201 183
25	315	201 155	315	201 184
4	500	201 156	500	201 185
6	500	201 157	500	201 186
10	500	201 158	500	201 187
12	500	201 159	500	201 188
16	315	201 138	315	201 139
20	315	201 161	315	201 190
25	315	201 162	315	201 191
4	500	201 163	500	201 192
6	500	201 164	500	201 193
10	500	201 165	500	201 194
12	500	201 166	500	201 195
20	315	201 167	315	201 196
25	315	201 168	315	201 197

Multi-way ball valves with floating ball

3-way · brass · threaded connector · DN 6 - DN 50



Handle included in delivery

✳ Application of pressure only as indicated in chapter "Technical information"

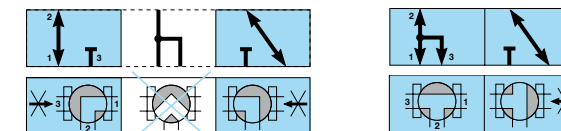
Actuators and custom orders on request

All dimensions subject to change without notice

Dimensions in mm

Weight in kg

Pressure in bar



Bore:	L	T
Cycling:	90°	90°
Body:	brass	brass
Ball:	brass, hard chrome plated	brass, hard chrome plated
Stem:	brass	brass
Ball seats:	PTFE	PTFE
Stem seals:	PTFE	PTFE

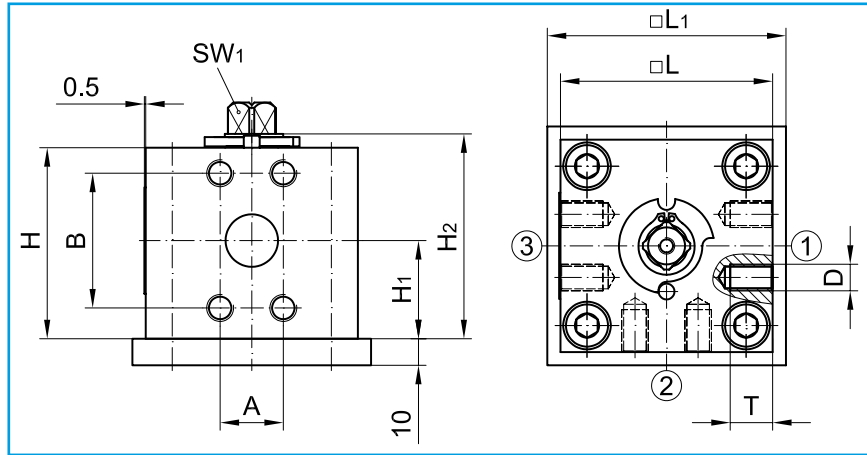
Connection	DN/LW	Thread D	L	L ₁	A	B	B ₁	Weight
BSP-female thread DIN EN 10226-1	6/10	Rp 1/4	71	13	130	85	35,5	0,7
	10/13	Rp 3/8	71	13	130	85	35,5	0,7
	15/13	Rp 1/2	80	13	130	85	40,0	0,7
	20/18	Rp 3/4	96	15	160	98	48,0	1,1
	25/23	Rp 1	113	17	160	102	56,5	1,7
	32/29	Rp 1 1/4	130	19	195	121	65,0	2,6
	40/35	Rp 1 1/2	147	22	195	125	73,5	3,7
	50/44	Rp 2	169	27	235	141	84,5	5,8

DN/LW	PN	Article-No.	PN	Article-No.
6/10	40	201 501	40	201 551
10/13	40	201 502	40	201 552
15/13	40	201 503	40	201 553
20/18	40	201 504	40	201 554
25/23	25	201 505	25	201 555
32/29	16	201 506	16	201 556
40/35	16	201 507	16	201 557
50/44	16	201 508	16	201 558



Multi-way ball valves with floating ball

3-way · steel · ISO · DN 19 - DN 32



Handle on request, refer to "Attachments, accessories".

✦ Application of pressure only as indicated in chapter "Technical information"

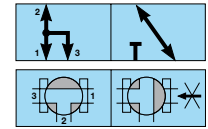
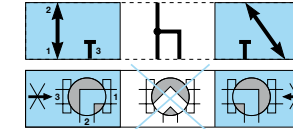
Actuators and custom orders on request

All dimensions subject to change without notice

Dimensions in mm

Weight in kg

Pressure in bar



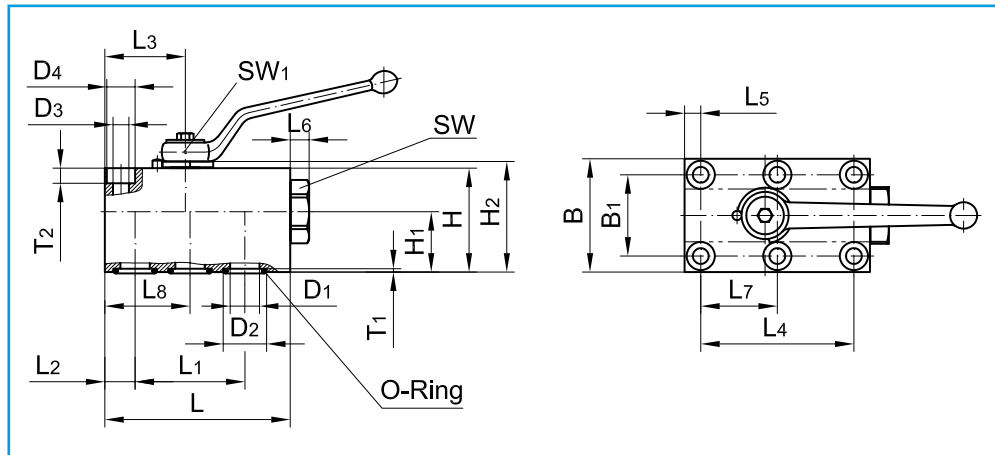
	L	L	T	T
Bore:	L	L	T	T
Cycling:	90°	90°	90°	90°
Body:	steel	steel	steel	steel
Ball:	steel, hard chrome plated	steel, hard chrome plated	steel, hard chrome plated	steel, hard chrome plated
Stem:	steel	steel	steel	steel
Ball seats:	POM	POM	POM	POM
Stem seals:	NBR	FKM	NBR	FKM

Connection	DN	Flange-size (inch)	D	T	A	B	L	L1	H	H1	H2	SW1	Weight	DN	PN		PN		PN		PN	
															Article-No.	Article-No.	Article-No.	Article-No.	Article-No.	Article-No.		
ISO 6162-2	19	3/4	M10	21	23,8	50,8	80	90	72	37	77,5	14	4,0	19	400	204 301	400	204 306	400	204 311	400	204 316
	25	1	M12	23	27,8	57,2	90	100	80	40	85,5	14	5,5	25	400	204 302	400	204 307	400	204 312	400	204 317
	32	1 1/4	M12	24	31,8	66,6	100	110	100	50	106,0	17	8,0	32	400	204 304	400	204 309	400	204 314	400	204 319
	19	3/4	3/8 - 16 UNC	24	23,8	50,8	80	90	72	37	77,5	14	4,0	20	400	204 321	400	204 326	400	204 331	400	204 336
	25	1	7/16 - 14 UNC	27	27,8	57,2	90	100	80	40	85,5	14	5,5	25	400	204 322	400	204 327	400	204 332	400	204 337
	32	1 1/4	1/2 - 13 UNC	28	31,8	66,7	100	110	100	50	106,0	17	8,0	32	400	204 323	400	204 328	400	204 333	400	204 338



Multi-way ball valves with floating ball

3-way · steel · manifold mounting · DN 6 - DN 65



Handle and o-rings included in delivery

For handles refer to "Attachments, accessories".

✦ Application of pressure only as indicated in chapter "Technical information"

Actuators and custom orders on request

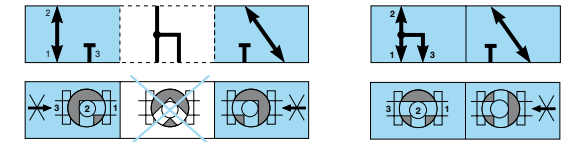
All dimensions subject to change without notice

*) DN 32 to DN 50: grey cast iron

Dimensions in mm

Weight in kg

Pressure in bar



Bore:	L	T
Cycling:	90°	90°
Body*:	steel	steel
Ball:	steel, hard chrome plated	steel, hard chrome plated
Stem:	steel	steel
Body seals:	NBR	NBR
Ball seats:	POM	POM
Stem seals:	NBR	NBR

Connection	DN	L	L1	L2	L3	L4	L5	L6	L7	L8	B	B1	H	H1	H2	T1	T2
Body-Flange with O-ring-seal	6	59	35	8,5	23,5	35	8,5	4,5	17,5	26,0	40	27	35	20,0	37,5	1,8	6,8
	10	73	44	10,0	29,0	55	7,5	7,0	27,5	29,0	55	40	45	24,5	48,5	1,8	8,0
	12	98	58	16,0	42,5	83	7,5	10,0	41,5	42,5	60	45	55	32,0	58,5	1,8	8,0
	20	117	69	20,0	52,0	97	10,0	12,0	48,5	52,0	70	51	70	39,0	74,0	2,7	11,0
	25	138	81	24,0	62,0	115	10,0	7,0	57,5	62,0	80	60	80	46,0	84,0	2,7	11,0
	32	165	96	29,0	75,0	136	12,0	11,0	68,0	75,0	100	78	100	56,6	104,5	2,7	12,0
	40	175	112	28,5	84,5	112	28,5	25,0	56,0	84,5	130	95	100	52,6	104,5	2,7	17,5
	50	215	136	38,0	106,0	136	38,0	25,0	68,0	106,0	150	112	110	55,1	114,5	2,7	20,0
	65	320	190	55,0	150,0	210	45,0	63,0	105,0	150,0	235	185	157	78,5	161,5	2,8	25,5

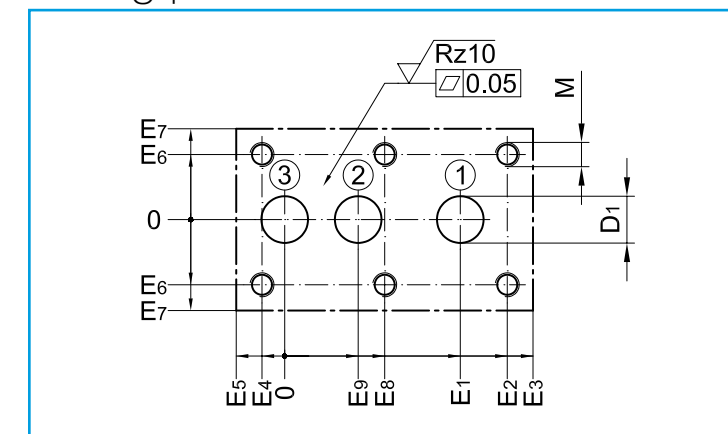
DN	D1	D2	D3	D4	SW	SW1	Handle Code	Weight	for Cylinder-head screws DIN EN ISO 4762 (DIN 912)
6	6,0	12,0	6,4	11	24	7	1	0,58	M6 - 10,9
10	9,5	15,0	8,4	-	32	8	2	1,15	M8 - 10,9
12	12,5	25,0	8,4	-	36	10	3	2,11	M8 - 12,9
20	20,0	30,0	10,5	17	-	14	53	4,00	M10 - 12,9
25	24,0	35,0	10,5	17	50	14	53	5,58	M10 - 12,9
32	32,0	40,0	13,0	19	70	17	22	11,14	M12 - 12,9
40	38,0	48,5	17,0	26	-	17	22	15,19	M16 - 12,9
50	48,0	55,5	21,0	33	-	17	22	22,67	M20 - 12,9
65	62,0	79,0	26,0	40	-	22	11	87,50	M24 - 12,9

PN	Article-No.	PN	Article-No.
500	206 101	500	206 121
500	206 102	500	206 122
500	206 103	500	206 123
400	206 104	400	206 124
400	206 105	400	206 125
400	206 106	400	206 126
400	206 107	400	206 127
400	206 108	400	206 128
400	206 109	400	206 129

DN	D1	E1	E2	E3	E4	E5	E6	E7	E8	E9	M	O-Ring
6	6,0	35	35,0	50,5	0,0	8,5	13,5	20,0	17,5	17,5	M 6	7,50 x 2,50
10	9,5	44	52,5	63,0	2,5	10,0	20,0	27,5	25,0	19,0	M 8	10,50 x 2,50
12	15,5	58	74,5	82,0	8,5	16,0	22,5	30,0	33,0	26,5	M 8	20,50 x 2,50
20	20,0	69	87,0	97,0	10,0	20,0	25,5	35,0	38,5	32,0	M10	23,50 x 3,50
25	24,0	81	101,0	114,0	14,0	24,0	30,0	40,0	43,5	38,0	M10	28,50 x 3,50
32	32,0	96	119,0	136,0	17,0	29,0	39,0	50,0	51,0	46,0	M12	33,50 x 3,50
40	38,0	112	112,0	146,5	0,0	28,5	47,5	65,0	56,0	56,0	M16	42,00 x 3,50
50	48,0	136	136,0	177,0	0,0	38,0	56,0	75,0	68,0	68,0	M20	49,00 x 3,50
65	62,0	190	200,0	265,0	10,0	55,0	92,5	117,5	95,0	95,0	M24	72,66 x 3,53

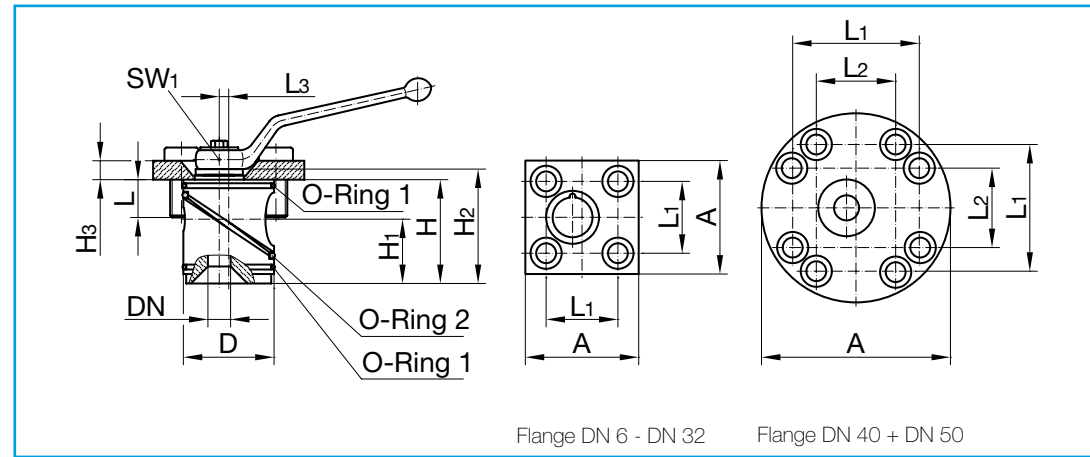
General tolerances
DIN ISO 2768
Surfaces
DIN EN ISO 4287

Drilling pattern

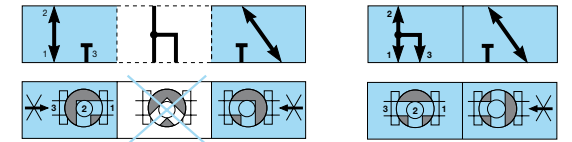


Multi-way ball valves with floating ball

3-way · steel · for manifold insertion as cartridge type · DN 6 - DN 50



Handle and attachment screws included in delivery
 For handles refer to "Attachments, accessories".
 ✦ Application of pressure only as indicated in chapter "Technical information"
 Actuators and custom orders on request
 All dimensions subject to change without notice
 Dimensions in mm
 Weight in kg
 Pressure in bar



Bore:	L	T
Cycling:	90°	90°
Body:	steel	steel
Ball:	steel, hard chrome plated	steel, hard chrome plated
Stem:	steel	steel
Body seals:	NBR	NBR
Ball seats:	POM	POM
Stem seals:	NBR	NBR

Connection	DN	D	H	H ₁	H ₂	H ₃	L	L ₁	L ₂	L ₃	SW ₁	A	Handle Code
Cavity	6	36	39,9	26,3	45,8	8	20	38	-	5,0	7	60	1
	10	45	50,9	32,5	55,8	10	20	50	-	5,0	8	80	2
	12	48	54,9	34,0	61,5	10	20	50	-	5,0	10	80	3
	16	54	58,9	36,0	64,5	10	20	60	-	5,5	10	90	3
	20	63	72,9	44,0	82,5	18	25	70	-	7,0	14	100	20
	25	70	78,9	47,0	89,0	18	25	70	-	7,0	14	100	20
	32	92	100,0	57,5	132,5	35	30	100	-	10,0	17	140	22
	40	107	116,0	66,0	150,5	35	30	134	84	10,0	17	200	22
	50	126	130,0	73,0	165,0	35	30	152	96	11,6	17	230	22

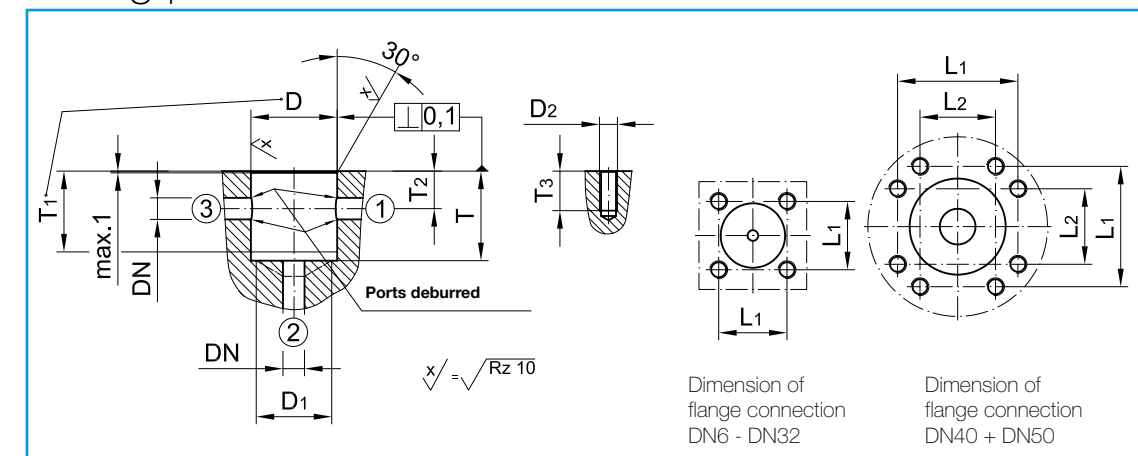
DN	O-Ring 1	O-Ring 2	Weight	Cylinder-head screws DIN EN ISO 4762 (DIN 912)	PN	Article-No.	PN	Article-No.
6	31,00 x 1,50	32,00 x 3,00	0,59	M10 x 25-12.9	500	107 031	500	107 041
10	40,00 x 2,00	42,00 x 3,00	1,15	M12 x 25-12.9	500	107 032	500	107 042
12	43,00 x 2,00	46,00 x 3,00	1,29	M12 x 25-12.9	400	107 033	400	107 043
16	49,00 x 2,00	53,57 x 3,53	1,59	M12 x 25-12.9	315	107 034	315	107 044
20	55,20 x 3,00	61,00 x 3,50	3,04	M16 x 35-12.9	315	107 035	315	107 045
25	63,00 x 3,00	67,00 x 4,00	3,31	M16 x 35-12.9	315	107 036	315	107 046
32	82,14 x 3,53	92,00 x 5,00	9,26	M20 x 50-12.9	315	107 037	315	107 047
40	98,02 x 3,53	108,00 x 6,00	14,77	M20 x 50-12.9	315	107 038	315	107 048
50	117,07 x 3,53	124,00 x 6,00	20,60	M20 x 50-12.9	315	107 039	315	107 049

DN	D H9	D ₁ max.	D ₂	L ₁ ±0,2	L ₂ ±0,2	T +0,1	T ₁ +0,2	T ₂ +0,1	T ₃ min.
6	36	31	M10	38	-	40	38	13,6	22
10	45	39	M12	50	-	51	47	18,4	22
12	48	42	M12	50	-	55	50	20,9	22
16	54	47	M12	60	-	59	54	22,9	22
20	63	55	M16	70	-	73	69	28,9	28
25	70	62	M16	70	-	79	74	31,9	28
32	92	80	M20	100	-	100	96	42,5	33
40	107	95	M20	134	84	116	111	50,0	33
50	126	115	M20	152	96	130	125	57,0	33

General tolerances
 DIN ISO 2768
 Surfaces
 DIN EN ISO 4287

DN	Article-No. Mounting-tool
6	107 051
10	107 052
12	107 053
16	107 054
20	107 055
25	107 056
32	107 057
40	107 058
50	107 059

Drilling pattern



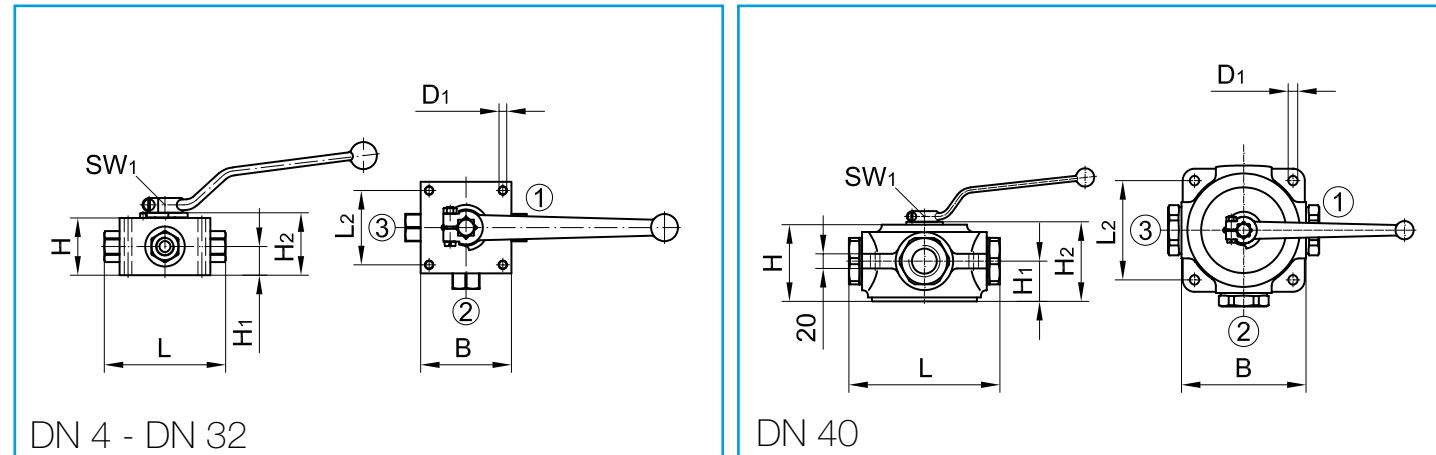
Dimension of
 flange connection
 DN6 - DN32

Dimension of
 flange connection
 DN40 + DN50



Multi-way ball valves with trunnion ball

3-way · steel · threaded connector · DN 4 - DN 40



Handle included in delivery

For more porting patterns refer to "Standard- and special porting patterns".

Also available with most other connections

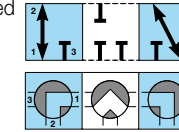
Please check pressure rating of the pipe fittings!

1) up to 100 bar to be operated manually

2) DN 32: steel, hard chrome plated

DN 40: grey cast iron, hard chrome plated

3) DN 40: grey cast iron



For handles refer to "Attachments, accessories"

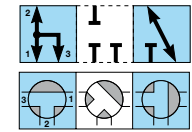
Actuators and custom orders on request

All dimensions subject to change without notice

Dimensions in mm

Weight in kg

Pressure in bar



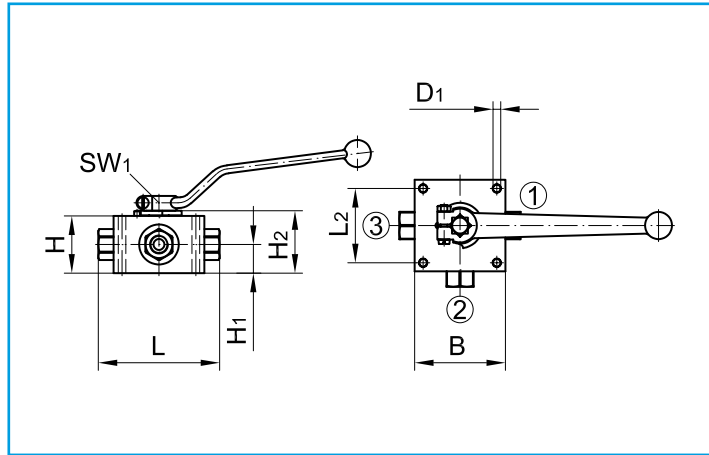
	L	L	T	T
Bore:	L	L	T	T
Cycling:	90°	90°	90°	90°
Body ³⁾ :	steel	steel	steel	steel
Trunnion ball ²⁾ :	brass, hard chrome plated	brass, hard chrome plated	brass, hard chrome plated	brass, hard chrome plated
Ball seats:	POM	PTFE	POM	PTFE
Shaft seals:	NBR	FKM	NBR	FKM

Connection	DN	Thread D	RA	L	L1	L2	B	H	H1	H2	D1	SW	SW1	Handle Code	Weight
For cut (clamp) ring tube fittings DIN 2353 light series ISO 8434-1	4	M12 x 1,5	6	100	10	55	70	40	20,0	44,5	6,7	19	12	7	1,58
	6	M14 x 1,5	8	100	10	55	70	40	20,0	44,5	6,7	19	12	7	1,57
	8	M16 x 1,5	10	109	11	65	80	50	25,0	54,5	6,7	24	14	8	2,50
	10	M18 x 1,5	12	109	11	65	80	50	25,0	54,5	6,7	24	14	8	2,50
	12	M22 x 1,5	15	130	12	80	100	55	27,5	59,5	8,4	30	14	8	4,16
	16/12	M26 x 1,5	18	136	12	80	100	55	27,5	59,5	8,4	30	14	8	4,26
	20	M30 x 2	22	138	14	85	100	75	40,0	79,5	8,4	41	19	10	5,71
	25	M36 x 2	28	157	14	105	120	81	43,5	85,5	10,5	50	19	10	8,60
	32	M45 x 2	35	210	16	106	Ø180	100	50,0	104,5	10,5	60	19	10	17,10
	40	M52 x 2	42	256	16	150	190	116	61,0	120,5	14,5	75	19	10	20,84
For cut (clamp) ring tube fittings DIN 2353 heavy series ISO 8434-1	4	M16 x 1,5	8	106	12	55	70	40	20,0	44,5	6,7	19	12	7	1,61
	6	M18 x 1,5	10	106	12	55	70	40	20,0	44,5	6,7	19	12	7	1,61
	8	M20 x 1,5	12	111	12	65	80	50	25,0	54,5	6,7	24	14	8	2,52
	10	M22 x 1,5	14	115	14	65	80	50	25,0	54,5	6,7	24	14	8	2,53
	12	M24 x 1,5	16	134	14	80	100	55	27,5	59,5	8,4	30	14	8	4,15
	16/12	M30 x 2	20	144	16	80	100	55	27,5	59,5	8,4	36	14	8	4,32
	20	M36 x 2	25	146	18	85	100	75	40,0	79,5	8,4	41	19	10	5,82
	25	M42 x 2	30	169	20	105	120	81	43,5	85,5	10,5	50	19	10	8,73
	32	M52 x 2	38	222	22	106	Ø180	100	50,0	104,5	10,5	60	19	10	17,40
	BSP-female thread DIN EN ISO 228-1	4	G 1/8	-	102	12	55	70	40	20,0	44,5	6,7	19	12	7
6		G 1/4	-	102	12	55	70	40	20,0	44,5	6,7	19	12	7	1,60
10		G 3/8	-	107	14	65	80	50	25,0	54,5	6,7	24	14	8	2,51
12		G 1/2	-	129	15	80	100	55	27,5	59,5	8,4	30	14	8	4,20
16/12		G 5/8	-	146	18	80	100	55	27,5	59,5	8,4	36	14	8	4,31
20		G 3/4	-	132	18	85	100	75	40,0	79,5	8,4	41	19	10	5,82
25		G1	-	162	20	105	120	81	43,5	85,5	10,5	50	19	10	8,95
32		G1 1/4	-	188	20	106	Ø180	100	50,0	104,5	10,5	60	19	10	16,61
40	G1 1/2	-	224	25	150	190	116	61,0	120,5	14,5	75	19	10	20,30	
NPT-female thread ANSI/ASME B1.20.1-1983	4	1/8 - 27 NPT	-	102	6,9	55	70	40	20,0	44,5	6,7	19	12	7	1,63
	6	1/4 - 18 NPT	-	102	10,0	55	70	40	20,0	44,5	6,7	19	12	7	1,60
	10	3/8 - 18 NPT	-	107	10,3	65	80	50	25,0	54,5	6,7	24	14	8	2,51
	12	1/2 - 14 NPT	-	129	13,6	80	100	55	27,5	59,5	8,4	30	14	8	4,20
	20	3/4 - 14 NPT	-	132	14,1	85	100	75	40,0	79,5	8,4	41	19	10	5,82
	25	1 - 11 1/2 NPT	-	162	16,8	105	120	81	43,5	85,5	10,5	50	19	10	8,95
	32	1 1/4 - 11 1/2 NPT	-	188	17,3	106	Ø180	100	50,0	104,5	10,5	60	19	10	16,61
	40	1 1/2 - 11 1/2 NPT	-	224	17,3	150	190	116	61,0	120,5	14,5	75	19	10	20,30

DN	PN	Article-No.	PN	Article-No.	PN	Article-No.	PN	Article-No.
4	500	202 001	100	202 026	500	202 051	100	202 076
6	500	202 002	100	202 027	500	202 052	100	202 077
8	500	202 003	100	202 028	500	202 053	100	202 078
10	500	202 004	100	202 029	500	202 054	100	202 079
12	500	202 005	100	202 030	500	202 055	100	202 080
16/12	500	202 006	100	202 031	500	202 056	100	202 081
20	315	202 901	100	202 902	315	202 903	100	202 904
25	315	202 921	100	202 922	315	202 923	100	202 924
32	315 ¹⁾	202 253	100	202 278	315 ¹⁾	202 303	100	202 328
40	100	202 940	100	202 955	100	202 970	100	202 985
4	500	202 007	100	202 032	500	202 057	100	202 082
6	500	202 008	100	202 033	500	202 058	100	202 083
8	500	202 009	100	202 034	500	202 059	100	202 084
10	500	202 010	100	202 035	500	202 060	100	202 085
12	500	202 011	100	202 036	500	202 061	100	202 086
16/12	500	202 012	100	202 037	500	202 062	100	202 087
20	315	202 905	100	202 906	315	202 907	100	202 908
25	315	202 925	100	202 926	315	202 927	100	202 928
32	315 ¹⁾	202 257	100	202 282	315 ¹⁾	202 307	100	202 332
4	500	202 013	100	202 038	500	202 063	100	202 088
6	500	202 014	100	202 039	500	202 064	100	202 089
10	500	202 015	100	202 040	500	202 065	100	202 090
12	500	202 016	100	202 041	500	202 066	100	202 091
16/12	500	202 017	100	202 042	500	202 067	100	202 092
20	315	202 909	100	202 910	315	202 911	100	202 912
25	315	202 929	100	202 930	315	202 931	100	202 932
32	315 ¹⁾	202 260	100	202 285	315 ¹⁾	202 310	100	202 335
40	100	202 947	100	202 962	100	202 977	100	202 992
4	500	202 018	100	202 043	500	202 068	100	202 093
6	500	202 019	100	202 044	500	202 069	100	202 094
10	500	202 020	100	202 045	500	202 070	100	202 095
12	500	202 021	100	202 046	500	202 071	100	202 096
20	315	202 913	100	202 914	315	202 915	100	202 916
25	315	202 933	100	202 934	315	202 935	100	202 936
32	315 ¹⁾	202 264	100	202 289	315 ¹⁾	202 314	100	202 339
40	100	202 951	100	202 966	100	202 981	100	202 996

Multi-way ball valves with trunnion ball

3-way · stainless steel · threaded connector · DN 4 - DN 32



Handle included in delivery

For handles refer to "Attachments, accessories".

For more porting patterns refer to "Standard- and special porting patterns".

Stainless steel (material no. 1.4571 - or other stainless steels)

Also available with most other connections

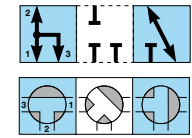
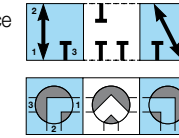
Actuators and custom orders on request

All dimensions subject to change without notice

Dimensions in mm

Weight in kg

Pressure in bar

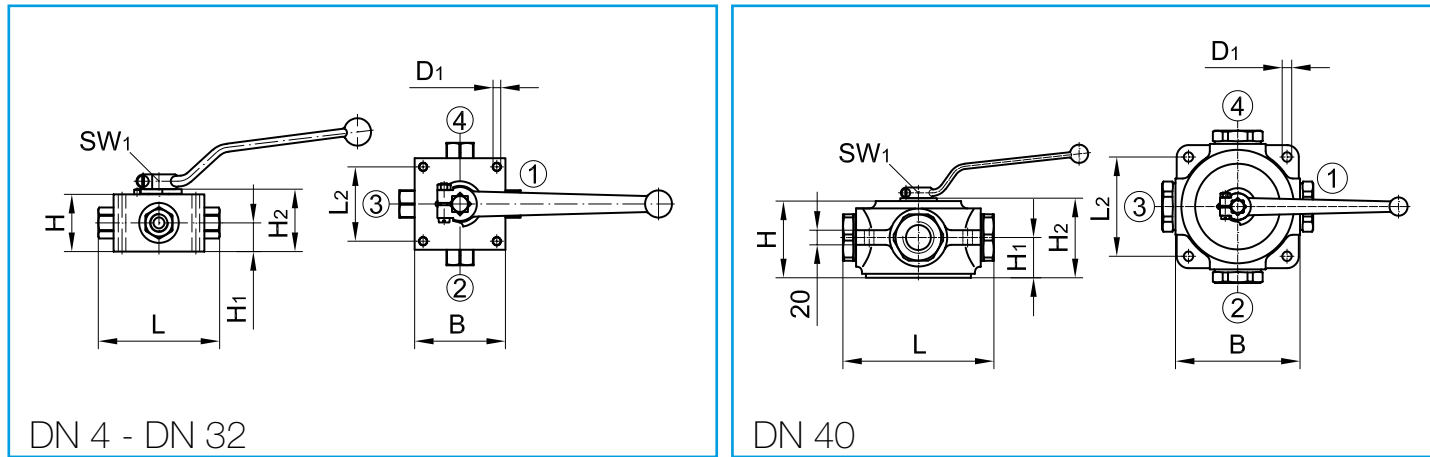


	L	L	T	T
Bore:	L	L	T	T
Cycling:	90°	90°	90°	90°
Body:	stainless steel	stainless steel	stainless steel	stainless steel
Trunnion ball:	stainless steel	stainless steel	stainless steel	stainless steel
Ball seats:	PTFE	PTFE	PTFE	PTFE
Shaft seals:	FKM	FFKM	FKM	FFKM

Connection	DN	Thread D	RA	L	L1	L2	B	H	H1	H2	D1	SW	SW1	Handle Code	Weight	DN	PN	Article-No.	PN	Article-No.	PN	Article-No.	PN	Article-No.
For cut (clamp) ring tube fittings DIN 2353 light series ISO 8434-1	4	M12 x 1,5	6	100	10	55	70	40	20,0	44,5	6,7	19	12	7	1,58	4	100	202 501	100	202 526	100	202 551	100	202 576
	6	M14 x 1,5	8	100	10	55	70	40	20,0	44,5	6,7	19	12	7	1,57	6	100	202 502	100	202 527	100	202 552	100	202 577
	8	M16 x 1,5	10	109	11	65	80	50	25,0	54,5	6,7	24	14	8	2,50	8	100	202 503	100	202 528	100	202 553	100	202 578
	10	M18 x 1,5	12	109	11	65	80	50	25,0	54,5	6,7	24	14	8	2,50	10	100	202 504	100	202 529	100	202 554	100	202 579
	12	M22 x 1,5	15	130	12	80	100	55	27,5	59,5	8,4	30	14	8	4,16	12	100	202 505	100	202 530	100	202 555	100	202 580
	16/12	M26 x 1,5	18	136	12	80	100	55	27,5	59,5	8,4	30	14	8	4,26	16/12	100	202 506	100	202 531	100	202 556	100	202 581
	20	M30 x 2	22	138	14	85	100	75	40,0	79,5	8,4	41	19	10	5,71	20	100	202 751	100	202 776	100	202 801	100	202 826
	25	M36 x 2	28	157	14	105	120	81	43,5	85,5	10,5	50	19	10	8,60	25	100	202 752	100	202 777	100	202 802	100	202 827
	32	M45 x 2	35	210	16	106	Ø180	100	50,0	104,5	10,5	60	19	10	17,10	32	100	202 753	100	202 778	100	202 803	100	202 828
	For cut (clamp) ring tube fittings DIN 2353 heavy series ISO 8434-1	4	M16 x 1,5	8	106	12	55	70	40	20,0	44,5	6,7	19	12	7	1,61	4	100	202 507	100	202 532	100	202 557	100
6		M18 x 1,5	10	106	12	55	70	40	20,0	44,5	6,7	19	12	7	1,61	6	100	202 508	100	202 533	100	202 558	100	202 583
8		M20 x 1,5	12	111	12	65	80	50	25,0	54,5	6,7	24	14	8	2,52	8	100	202 509	100	202 534	100	202 559	100	202 584
10		M22 x 1,5	14	115	14	65	80	50	25,0	54,5	6,7	24	14	8	2,53	10	100	202 510	100	202 535	100	202 560	100	202 585
12		M24 x 1,5	16	134	14	80	100	55	27,5	59,5	8,4	30	14	8	4,15	12	100	202 511	100	202 536	100	202 561	100	202 586
16/12		M30 x 2	20	144	16	80	100	55	27,5	59,5	8,4	36	14	8	4,32	16/12	100	202 512	100	202 537	100	202 562	100	202 587
20		M36 x 2	25	146	18	85	100	75	40,0	79,5	8,4	41	19	10	5,82	20	100	202 755	100	202 780	100	202 805	100	202 830
25		M42 x 2	30	169	20	105	120	81	43,5	85,5	10,5	50	19	10	8,73	25	100	202 756	100	202 781	100	202 806	100	202 831
BSP-female thread DIN EN ISO 228-1	4	G 1/8	-	102	12	55	70	40	20,0	44,5	6,7	19	12	7	1,63	4	100	202 513	100	202 538	100	202 563	100	202 588
	6	G 1/4	-	102	12	55	70	40	20,0	44,5	6,7	19	12	7	1,60	6	100	202 514	100	202 539	100	202 564	100	202 589
	10	G 3/8	-	107	14	65	80	50	25,0	54,5	6,7	24	14	8	2,51	10	100	202 515	100	202 540	100	202 565	100	202 590
	12	G 1/2	-	129	15	80	100	55	27,5	59,5	8,4	30	14	8	4,20	12	100	202 516	100	202 541	100	202 566	100	202 591
	16/12	G 5/8	-	146	18	80	100	55	27,5	59,5	8,4	36	14	8	4,31	16/12	100	202 517	100	202 542	100	202 567	100	202 592
	20	G 3/4	-	132	18	85	100	75	40,0	79,5	8,4	41	19	10	5,82	20	100	202 758	100	202 783	100	202 808	100	202 833
	25	G1	-	162	20	105	120	81	43,5	85,5	10,5	50	19	10	8,95	25	100	202 759	100	202 784	100	202 809	100	202 834
NPT-female thread ANSI/ASME B1.20.1-1983	4	1/8 - 27 NPT	-	102	6,9	55	70	40	20,0	44,5	6,7	19	12	7	1,63	4	100	202 518	100	202 543	100	202 568	100	202 593
	6	1/4 - 18 NPT	-	102	10,0	55	70	40	20,0	44,5	6,7	19	12	7	1,60	6	100	202 519	100	202 544	100	202 569	100	202 594
	10	3/8 - 18 NPT	-	107	10,3	65	80	50	25,0	54,5	6,7	24	14	8	2,51	10	100	202 520	100	202 545	100	202 570	100	202 595
	12	1/2 - 14 NPT	-	129	13,6	80	100	55	27,5	59,5	8,4	30	14	8	4,20	12	100	202 521	100	202 546	100	202 571	100	202 596
	20	3/4 - 14 NPT	-	132	14,1	85	100	75	40,0	79,5	8,4	41	19	10	5,82	20	100	202 762	100	202 787	100	202 812	100	202 837
	25	1 - 11 1/2 NPT	-	162	16,8	105	120	81	43,5	85,5	10,5	50	19	10	8,95	25	100	202 763	100	202 788	100	202 813	100	202 838
32	1 1/4 - 11 1/2 NPT	-	188	17,3	106	Ø180	100	50,0	104,5	10,5	60	19	10	16,61	32	100	202 764	100	202 789	100	202 814	100	202 839	

Multi-way ball valves with trunnion ball

4-way · steel · threaded connector · DN 4 - DN 40



Handle included in delivery

For more porting patterns refer to "Standard- and special porting patterns".

Also available with most other connections

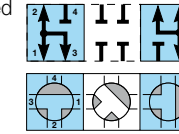
Please check pressure ratings of the pipe fittings!

1) up to 100 bar to be operated manually

2) DN 32: steel, hard chrome plated

DN 40: grey cast iron, hard chrome plated

3) DN 40: grey cast iron



For handles refer to "Attachments, accessories"

Actuators and custom orders on request

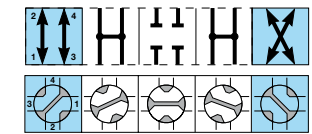
All dimensions subject to change without notice

Dimensions in mm

Weight in kg

Pressure in bar

(reduced bore)



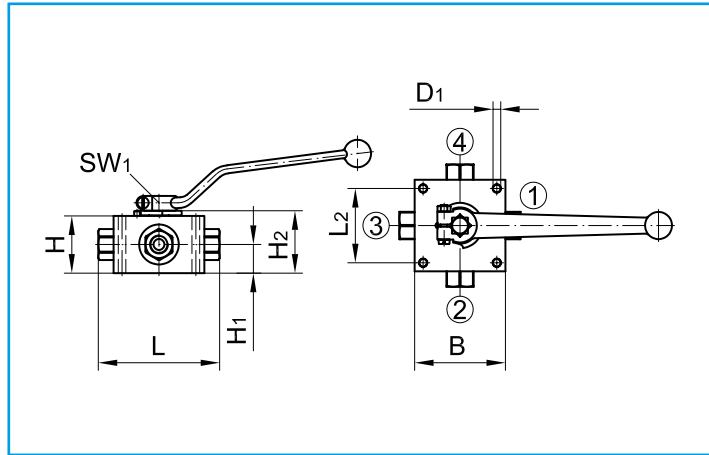
	T	T	Double-L	Double-L
Bore:	T	T	Double-L	Double-L
Cycling:	90°	90°	90°	90°
Body ³⁾ :	steel	steel	steel	steel
Trunnion ball ²⁾ :	brass, hard chrome plated	brass, hard chrome plated	brass, hard chrome plated	brass, hard chrome plated
Ball seats:	POM	PTFE	POM	PTFE
Shaft seals:	NBR	FKM	NBR	FKM

Connection	DN	Thread D	RA	L	L1	L2	B	H	H1	H2	D1	SW	SW1	Handle Code	Weight
For cut (clamp) ring tube fittings DIN 2353 light series ISO 8434-1	4	M12 x 1,5	6	100	10	55	70	40	20,0	44,5	6,7	19	12	7	1,60
	6	M14 x 1,5	8	100	10	55	70	40	20,0	44,5	6,7	19	12	7	1,60
	8	M16 x 1,5	10	109	11	65	80	50	25,0	54,5	6,7	24	14	8	2,50
	10	M18 x 1,5	12	109	11	65	80	50	25,0	54,5	6,7	24	14	8	2,50
	12	M22 x 1,5	15	130	12	80	100	55	27,5	59,5	8,4	30	14	8	4,16
	16/12	M26 x 1,5	18	136	12	80	100	55	27,5	59,5	8,4	30	14	8	4,26
	20	M30 x 2	22	138	14	85	100	75	40,0	79,5	8,4	41	19	10	5,72
	25	M36 x 2	28	157	14	105	120	81	43,5	85,5	10,5	50	19	10	8,60
	32	M45 x 2	35	210	16	106	Ø180	100	50,0	104,5	10,5	60	19	10	17,10
	40	M52 x 2	42	256	16	150	190	116	61,0	120,5	14,5	75	19	10	20,84
For cut (clamp) ring tube fittings DIN 2353 heavy series ISO 8434-1	4	M16 x 1,5	8	106	12	55	70	40	20,0	44,5	6,7	19	12	7	1,61
	6	M18 x 1,5	10	106	12	55	70	40	20,0	44,5	6,7	19	12	7	1,61
	8	M20 x 1,5	12	111	12	65	80	50	25,0	54,5	6,7	24	14	8	2,52
	10	M22 x 1,5	14	115	14	65	80	50	25,0	54,5	6,7	24	14	8	2,53
	12	M24 x 1,5	16	134	14	80	100	55	27,5	59,5	8,4	30	14	8	4,15
	16/12	M30 x 2	20	144	16	80	100	55	27,5	59,5	8,4	36	14	8	4,32
	20	M36 x 2	25	146	18	85	100	75	40,0	79,5	8,4	41	19	10	5,82
	25	M42 x 2	30	169	20	105	120	81	43,5	85,5	10,5	50	19	10	8,73
	32	M52 x 2	38	222	22	106	Ø180	100	50,0	104,5	10,5	60	19	10	17,40
	BSP-female thread DIN EN ISO 228-1	4	G 1/8	-	102	12	55	70	40	20,0	44,5	6,7	19	12	7
6		G 1/4	-	102	12	55	70	40	20,0	44,5	6,7	19	12	7	1,60
10		G 3/8	-	107	14	65	80	50	25,0	54,5	6,7	24	14	8	2,51
12		G 1/2	-	129	15	80	100	55	27,5	59,5	8,4	30	14	8	4,20
16/12		G 5/8	-	146	18	80	100	55	27,5	59,5	8,4	36	14	8	4,31
20		G 3/4	-	132	18	85	100	75	40,0	79,5	8,4	41	19	10	5,82
25		G1	-	162	20	105	120	81	43,5	85,5	10,5	50	19	10	8,95
32		G1 1/4	-	188	20	106	Ø180	100	50,0	104,5	10,5	60	19	10	16,61
40	G1 1/2	-	224	25	150	190	116	61,0	120,5	14,5	75	19	10	20,30	
NPT-female thread ANSI/ASME B1.20.1-1983	4	1/8 - 27 NPT	-	102	6,9	55	70	40	20,0	44,5	6,7	19	12	7	1,63
	6	1/4 - 18 NPT	-	102	10,0	55	70	40	20,0	44,5	6,7	19	12	7	1,60
	10	3/8 - 18 NPT	-	107	10,3	65	80	50	25,0	54,5	6,7	24	14	8	2,51
	12	1/2 - 14 NPT	-	129	13,6	80	100	55	27,5	59,5	8,4	30	14	8	4,20
	20	3/4 - 14 NPT	-	132	14,1	85	100	75	40,0	79,5	8,4	41	19	10	5,85
	25	1 - 11 1/2 NPT	-	162	16,8	105	120	81	43,5	85,5	10,5	50	19	10	8,95
	32	1 1/4 - 11 1/2 NPT	-	188	17,3	106	Ø180	100	50,0	104,5	10,5	60	19	10	16,61
	40	1 1/2 - 11 1/2 NPT	-	224	17,3	150	190	116	61,0	120,5	14,5	75	19	10	20,30

DN	PN	Article-No.	PN	Article-No.	PN	Article-No.	PN	Article-No.
4	500	203 001	100	203 026	500	203 051	100	203 076
6	500	203 002	100	203 027	500	203 052	100	203 077
8	500	203 003	100	203 028	500	203 053	100	203 078
10	500	203 004	100	203 029	500	203 054	100	203 079
12	500	203 005	100	203 030	500	203 055	100	203 080
16/12	500	203 006	100	203 031	500	203 056	100	203 081
20	315	203 911	100	203 912	315	203 913	100	203 914
25	315	203 931	100	203 932	315	203 933	100	203 934
32	315 ¹⁾	203 253	100	203 278	315 ¹⁾	203 303	100	203 328
40	100	204 204	100	204 219	100	204 234	100	204 249
4	500	203 007	100	203 032	500	203 057	100	203 082
6	500	203 008	100	203 033	500	203 058	100	203 083
8	500	203 009	100	203 034	500	203 059	100	203 084
10	500	203 010	100	203 035	500	203 060	100	203 085
12	500	203 011	100	203 036	500	203 061	100	203 086
16/12	500	203 012	100	203 037	500	203 062	100	203 087
20	315	203 915	100	203 916	315	203 917	100	203 918
25	315	203 935	100	203 936	315	203 937	100	203 938
32	315 ¹⁾	203 257	100	203 282	315 ¹⁾	203 307	100	203 332
4	500	203 013	100	203 038	500	203 063	100	203 088
6	500	203 014	100	203 039	500	203 064	100	203 089
10	500	203 015	100	203 040	500	203 065	100	203 090
12	500	203 016	100	203 041	500	203 066	100	203 091
16/12	500	203 017	100	203 042	500	203 067	100	203 092
20	315	203 919	100	203 920	315	203 921	100	203 922
25	315	203 939	100	203 940	315	203 941	100	203 942
32	315 ¹⁾	203 260	100	203 285	315 ¹⁾	203 310	100	203 335
40	100	204 211	100	204 226	100	204 241	100	204 256
4	500	203 018	100	203 043	500	203 068	100	203 093
6	500	203 019	100	203 044	500	203 069	100	203 094
10	500	203 020	100	203 045	500	203 070	100	203 095
12	500	203 021	100	203 046	500	203 071	100	203 096
20	315	203 923	100	203 924	315	203 925	100	203 926
25	315	203 943	100	203 944	315	203 945	100	203 946
32	315 ¹⁾	203 264	100	203 289	315 ¹⁾	203 314	100	203 339
40	100	204 215	100	204 230	100	204 245	100	204 260

Multi-way ball valves with trunnion ball

4-way · stainless steel · threaded connector · DN 4 - DN 32



Handle included in delivery

For handles refer to "Attachments, accessories"

For more porting patterns refer to "Standard- and special porting patterns".

Stainless steel (material no. 1.4571 - or other stainless steels)

Also available with most other connections

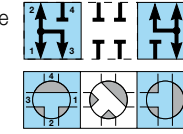
Actuators and custom orders on request

All dimensions subject to change without notice

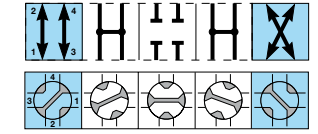
Dimensions in mm

Weight in kg

Pressure in bar



(reduced bore)

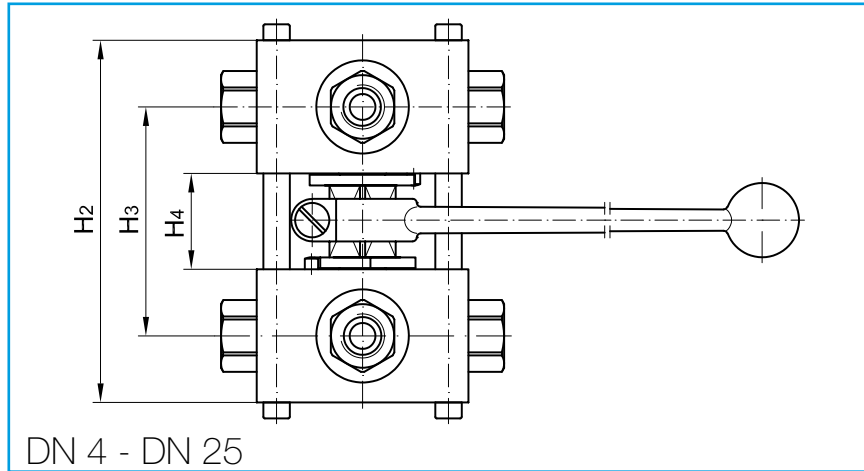


	T	T	Double-L	Double-L
Cycling:	90°	90°	90°	90°
Body:	stainless steel	stainless steel	stainless steel	stainless steel
Trunnion ball:	stainless steel	stainless steel	stainless steel	stainless steel
Ball seats:	PTFE	PTFE	PTFE	PTFE
Shaft seals:	FKM	FFKM	FKM	FFKM

Connection	DN	Thread D	RA	L	L1	L2	B	H	H1	H2	D1	SW	SW1	Handle Code	Weight	DN	PN	Article-No.	PN	Article-No.	PN	Article-No.	PN	Article-No.
For cut (clamp) ring tube fittings DIN 2353 light series ISO 8434-1	4	M12 x 1,5	6	100	10	55	70	40	20,0	44,5	6,7	19	12	7	1,60	4	100	203 501	100	203 526	100	203 551	100	203 576
	6	M14 x 1,5	8	100	10	55	70	40	20,0	44,5	6,7	19	12	7	1,60	6	100	203 502	100	203 527	100	203 552	100	203 577
	8	M16 x 1,5	10	109	11	65	80	50	25,0	54,5	6,7	24	14	8	2,50	8	100	203 503	100	203 528	100	203 553	100	203 578
	10	M18 x 1,5	12	109	11	65	80	50	25,0	54,5	6,7	24	14	8	2,50	10	100	203 504	100	203 529	100	203 554	100	203 579
	12	M22 x 1,5	15	130	12	80	100	55	27,5	59,5	8,4	30	14	8	4,16	12	100	203 505	100	203 530	100	203 555	100	203 580
	16/12	M26 x 1,5	18	136	12	80	100	55	27,5	59,5	8,4	30	14	8	4,26	16/12	100	203 506	100	203 531	100	203 556	100	203 581
	20	M30 x 2	22	138	14	85	100	75	40,0	79,5	8,4	41	19	10	5,72	20	100	203 751	100	203 776	100	203 801	100	203 826
	25	M36 x 2	28	157	14	105	120	81	43,5	85,5	10,5	50	19	10	8,60	25	100	203 752	100	203 777	100	203 802	100	203 827
	32	M45 x 2	35	210	16	106	Ø180	100	50,0	104,5	10,5	60	19	10	17,10	32	100	203 753	100	203 778	100	203 803	100	203 828
	For cut (clamp) ring tube fittings DIN 2353 heavy series ISO 8434-1	4	M16 x 1,5	8	106	12	55	70	40	20,0	44,5	6,7	19	12	7	1,61	4	100	203 507	100	203 532	100	203 557	100
6		M18 x 1,5	10	106	12	55	70	40	20,0	44,5	6,7	19	12	7	1,61	6	100	203 508	100	203 533	100	203 558	100	203 583
8		M20 x 1,5	12	111	12	65	80	50	25,0	54,5	6,7	24	14	8	2,52	8	100	203 509	100	203 534	100	203 559	100	203 584
10		M22 x 1,5	14	115	14	65	80	50	25,0	54,5	6,7	24	14	8	2,53	10	100	203 510	100	203 535	100	203 560	100	203 585
12		M24 x 1,5	16	134	14	80	100	55	27,5	59,5	8,4	30	14	8	4,15	12	100	203 511	100	203 536	100	203 561	100	203 586
16/12		M30 x 2	20	144	16	80	100	55	27,5	59,5	8,4	36	14	8	4,32	16/12	100	203 512	100	203 537	100	203 562	100	203 587
20		M36 x 2	25	146	18	85	100	75	40,0	79,5	8,4	41	19	10	5,82	20	100	203 755	100	203 780	100	203 805	100	203 830
25		M42 x 2	30	169	20	105	120	81	43,5	85,5	10,5	50	19	10	8,73	25	100	203 756	100	203 781	100	203 806	100	203 831
BSP-female thread DIN EN ISO 228-1	4	G 1/8	-	102	12	55	70	40	20,0	44,5	6,7	19	12	7	1,63	4	100	203 513	100	203 538	100	203 563	100	203 588
	6	G 1/4	-	102	12	55	70	40	20,0	44,5	6,7	19	12	7	1,60	6	100	203 514	100	203 539	100	203 564	100	203 589
	10	G 3/8	-	107	14	65	80	50	25,0	54,5	6,7	24	14	8	2,51	10	100	203 515	100	203 540	100	203 565	100	203 590
	12	G 1/2	-	129	15	80	100	55	27,5	59,5	8,4	30	14	8	4,20	12	100	203 516	100	203 541	100	203 566	100	203 591
	16/12	G 5/8	-	146	18	80	100	55	27,5	59,5	8,4	36	14	8	4,31	16/12	100	203 517	100	203 542	100	203 567	100	203 592
	20	G 3/4	-	132	18	85	100	75	40,0	79,5	8,4	41	19	10	5,82	20	100	203 758	100	203 783	100	203 808	100	203 833
	25	G1	-	162	20	105	120	81	43,5	85,5	10,5	50	19	10	8,95	25	100	203 759	100	203 784	100	203 809	100	203 834
NPT-female thread ANSI/ASME B1.20.1-1983	4	1/8 - 27 NPT	-	102	6,9	55	70	40	20,0	44,5	6,7	19	12	7	1,63	4	100	203 518	100	203 543	100	203 568	100	203 593
	6	1/4 - 18 NPT	-	102	10,0	55	70	40	20,0	44,5	6,7	19	12	7	1,60	6	100	203 519	100	203 544	100	203 569	100	203 594
	10	3/8 - 18 NPT	-	107	10,3	65	80	50	25,0	54,5	6,7	24	14	8	2,51	10	100	203 520	100	203 545	100	203 570	100	203 595
	12	1/2 - 14 NPT	-	129	13,6	80	100	55	27,5	59,5	8,4	30	14	8	4,20	12	100	203 521	100	203 546	100	203 571	100	203 596
	20	3/4 - 14 NPT	-	132	14,1	85	100	75	40,0	79,5	8,4	41	19	10	5,85	20	100	203 762	100	203 787	100	203 812	100	203 837
	25	1 - 11 1/2 NPT	-	162	16,8	105	120	81	43,5	85,5	10,5	50	19	10	8,95	25	100	203 763	100	203 788	100	203 813	100	203 838
	32	1 1/4 - 11 1/2 NPT	-	188	17,3	106	Ø180	100	50,0	104,5	10,5	60	19	10	16,61	32	100	203 764	100	203 789	100	203 814	100	203 839

Multi-way ball valves with trunnion ball

Steel or stainless steel • as combination

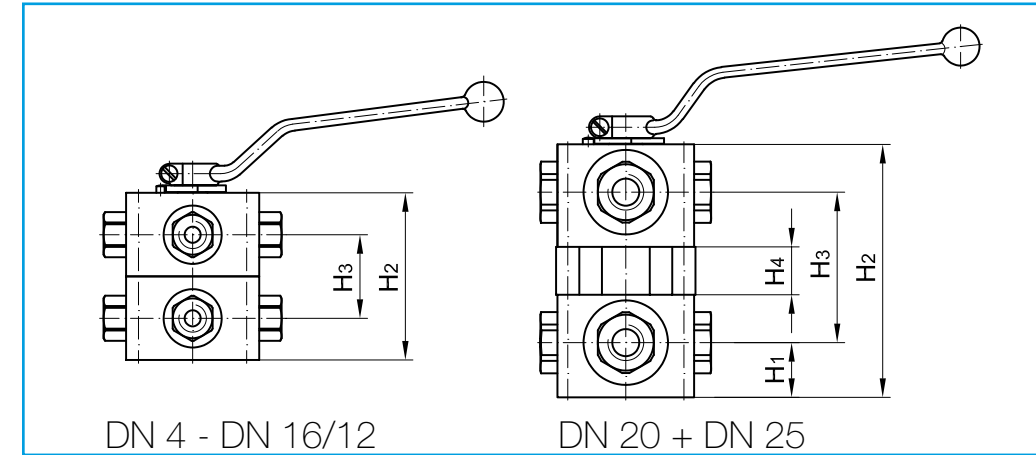


Handle included in delivery
 For dimensions and article-numbers for ball valve bodies refer to the respective chapter.
 Custom orders on request
 All dimensions subject to change without notice
 Dimensions in mm

Also available completely assembled

Connection	DN	H2	H3	H4	Handle Code
ALL	4	114	74	34	44
	6	114	74	34	44
	8	136	86	36	45
	10	136	86	36	45
	12	146	91	36	45
	16/12	146	91	36	45
	20	195	115	45	47
25	207	120	45	47	

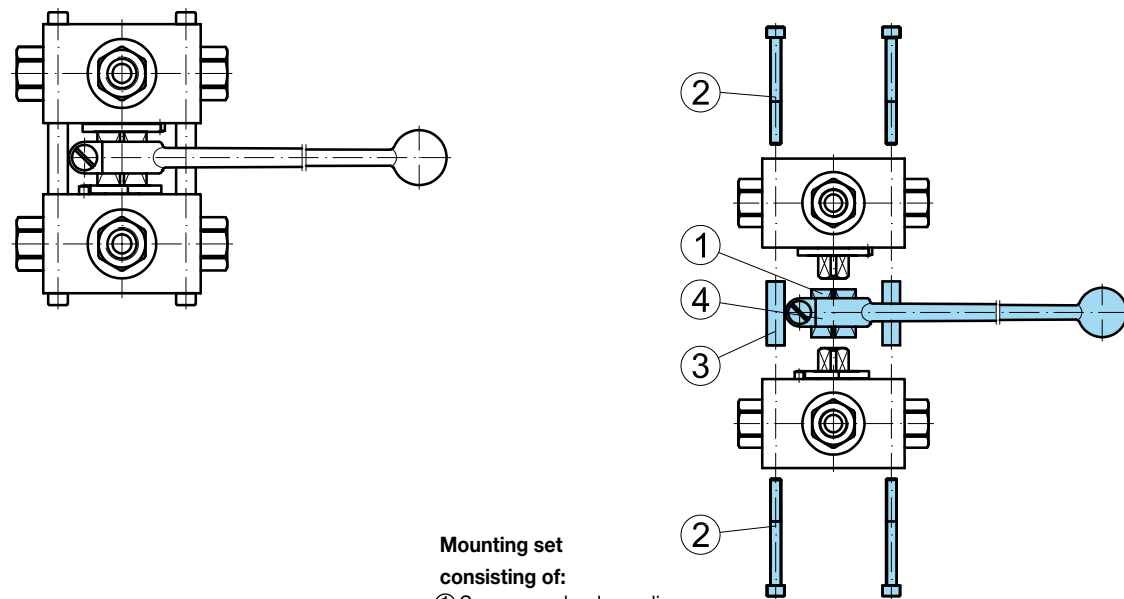
Mounting-sets	
Article-No. (Steel)	Article-No. (Stainless steel)
203 890	203 950
203 890	203 950
203 891	203 951
203 891	203 951
203 892	203 952
203 892	203 952
203 893	203 953
203 894	203 954



Handle included in delivery
 For dimensions and article-numbers for ball valve bodies refer to the respective chapter.
 Custom orders on request
 All dimensions subject to change without notice
 Dimensions in mm

Connection	DN	H1	H2	H3	H4	Handle Code
ALL	4	-	80	40	-	7
	6	-	80	40	-	7
	8	-	100	50	-	8
	10	-	100	50	-	8
	12	-	110	55	-	8
	16/12	-	110	55	-	8
	20	40,0	185	110	35	10
	25	43,5	197	116	35	10

Combination consisting of:
 two multi-way ball valves (without handle) and one mounting set

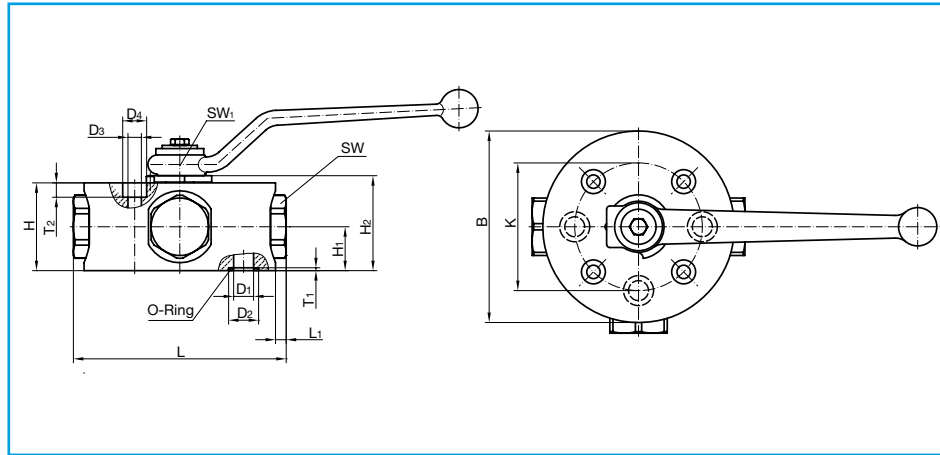


Mounting set consisting of:
 ① Square pre-load coupling
 ② Hex-head bolt (6 pc.)
 ③ Spacer sleeves (3 pc.)
 ④ Handle



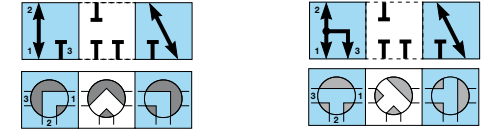
Multi-way ball valves with trunnion ball

3-way · steel · manifold mounting · DN 6 - DN 25



The body of the 3-way-version is identical with that of the 4-way-version.
The unused port is then to be sealed against the hydraulic manifold with an o-ring.

Handle and o-rings included in delivery
For handles refer to "Attachments, accessories"
For more porting patterns refer to "Standard- and special porting patterns".
Actuators and custom orders on request
All dimensions subject to change without notice
Dimensions in mm
Weight in kg
Pressure in bar



Bore:	L	T
Cycling:	90°	90°
Body:	steel	steel
Trunnion ball:	brass, hard chrome plated	brass, hard chrome plated
Body seals:	NBR	NBR
Ball seats:	POM	POM
Shaft seals:	NBR	NBR

Connection	DN	L	L ₁	B	H	H ₁	H ₂	K	D ₁	D ₂	D ₃	D ₄	T ₁	T ₂
Body-Flange with o-ring-seal	6	95	2,5	Ø 90	40,5	20,5	45,0	55	6,0	12,5	6,4	11	1,8	6,8
	10	108	4,0	Ø 100	50,0	25,0	54,5	65	8,0	15,0	6,4	11	1,8	6,8
	12	133	6,5	Ø 120	55,0	27,5	59,5	80	12,5	18,8	8,4	15	1,8	9,0
	20	190	5,0	Ø 180	75,0	40,0	79,5	115	19,0	30,0	17,0	26	3,0	22,0
	25	210	5,0	Ø 200	81,0	43,5	85,5	135	23,5	35,0	21,0	33	3,0	21,5
	32	300	5,0	Ø 290	100,0	50,0	104,5	200	32,0	40,0	25,0	40	3,0	26,5

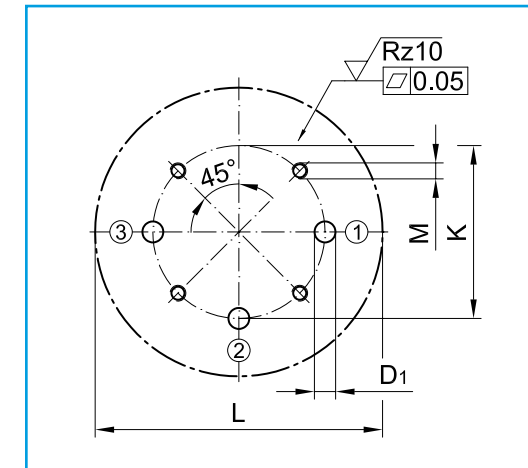
DN	SW	SW ₁	Handle Code	Weight	For Cylinder-head screws DIN EN ISO 4762 (DIN 912)
6	24	12	7	1,73	M 6 - 10.9
10	30	14	8	2,70	M 6 - 12.9
12	36	14	8	4,58	M 8 - 12.9
20	50	19	10	12,96	M16 - 8.8
25	60	19	10	16,60	M20 - 8.8
32	70	19	10	41,50	M24 - 8.8

PN	Article-No.	PN	Article-No.
400	206 501	400	206 561
400	206 502	400	206 562
400	206 503	400	206 563
315	206 504	315	206 564
315	206 505	315	206 565
315	206 506	315	206 566

DN	D ₁	K	L	M	O-Ring
6	6,0	55	95	M 6	8,0 x 2,5
10	8,0	65	108	M 6	10,0 x 2,5
12	12,5	80	133	M 8	14,0 x 2,5
20	19,0	115	190	M16	23,5 x 3,5
25	23,5	135	210	M20	28,1 x 3,5
32	32,0	200	300	M24	33,5 x 3,5

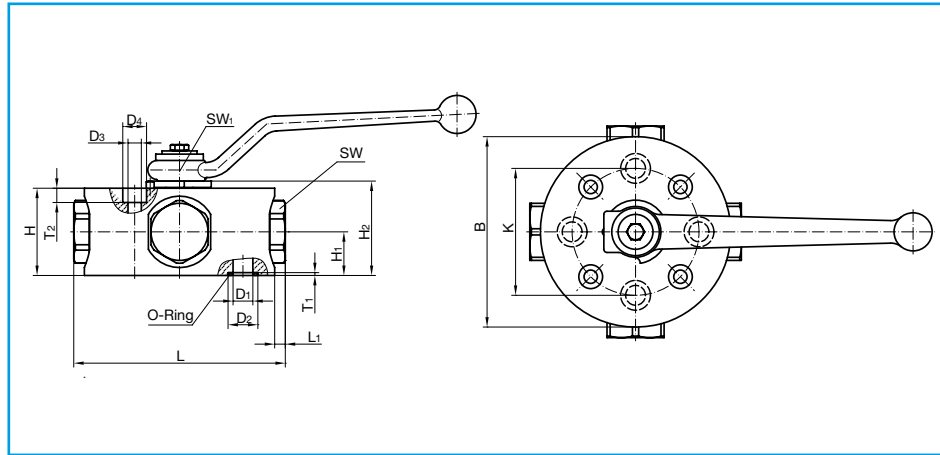
General tolerances
DIN ISO 2768
Surfaces
DIN EN ISO 4287

Drilling pattern DN 6 - DN 32

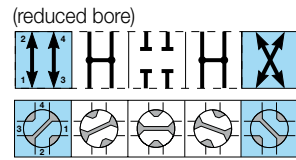
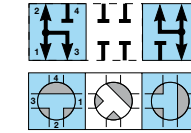


Multi-way ball valves with trunnion ball

4-way · steel · manifold mounting · DN 6 - DN 25



Handle and o-rings included in delivery
 For handles refer to "Attachments, accessories"
 For more porting patterns refer to "Standard- and special porting patterns".
 Actuators and custom orders on request
 All dimensions subject to change without notice
 Dimensions in mm
 Weight in kg
 Pressure in bar



Bore:	T	Double-L
Cycling:	90°	90°
Body:	steel	steel
Trunnion ball:	brass, hard chrome plated	brass, hard chrome plated
Body seals:	NBR	NBR
Ball seats:	POM	POM
Shaft seals:	NBR	NBR

Connection	DN	L	L1	B	H	H1	H2	K	D1	D2	D3	D4	T1	T2	DN	SW	SW1	Handle Code	Weight	For Cylinder-head screws DIN EN ISO 4762 (DIN 912)	PN	Article-No.	PN	Article-No.
Body-Flange with o-ring-seal	6	95	2,5	Ø 90	40,5	20,5	45,0	55	6,0	12,5	6,4	11	1,8	6,8	6	24	12	7	1,73	M 6 - 10.9	400	206 521	400	206 541
	10	108	4,0	Ø 100	50,0	25,0	54,5	65	8,0	15,0	6,4	11	1,8	6,8	10	30	14	8	2,70	M 6 - 12.9	400	206 522	400	206 542
	12	133	6,5	Ø 120	55,0	27,5	59,5	80	12,5	18,8	8,4	15	1,8	9,0	12	36	14	8	4,58	M 8 - 12.9	400	206 523	400	206 543
	20	190	5,0	Ø 180	75,0	40,0	79,5	115	19,0	30,0	17,0	26	3,0	22,0	20	50	19	10	12,96	M16 - 8.8	315	206 524	315	206 544
	25	210	5,0	Ø 200	81,0	43,5	85,5	135	23,5	35,0	21,0	33	3,0	21,5	25	60	19	10	16,60	M20 - 8.8	315	206 525	315	206 545
	32	300	5,0	Ø 290	100,0	50,0	104,5	200	32,0	40,0	25,0	40	3,0	26,5	32	70	19	10	41,50	M24 - 8.8	315	206 526	315	206 546

General tolerances DIN ISO 2768 Surfaces DIN EN ISO 4287	DN	D1	K	L	M	O-Ring
	6	6,0	55	95	M 6	8,0 x 2,5
	10	8,0	65	108	M 6	10,0 x 2,5
	12	12,5	80	133	M 8	14,0 x 2,5
	20	19,0	115	190	M16	23,5 x 3,5
	25	23,5	135	210	M20	28,1 x 3,5
	32	32,0	200	300	M24	33,5 x 3,5

Drilling pattern DN 6 - DN 32

