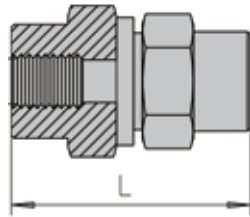
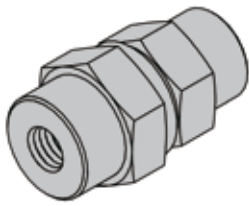
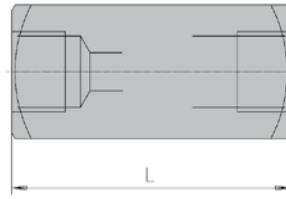


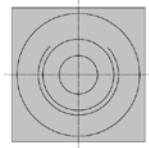
NRSF, RHDl, RV



RHDl



RV



BSP

DN	Carbon steel		Data				Material	Flow
	Part No	ID Code	W.P.	G	L	Weight	Body	
4	RHDl 1/8 R	2201540100	550	1/8" BSP	43		1	NON RETURN
6	RHDl 1/4 R	2201540200	550	1/4" BSP	51		1	NON RETURN
8	RHDl 3/8 R	2201540400	550	3/8" BSP	60		1	NON RETURN
12	RHDl 1/2 R	2201540600	550	1/2" BSP	73		1	NON RETURN
15	RHDl 3/4 R	2201540800	550	3/4" BSP	84		1	NON RETURN
19	RHDl 1 R	2201541000	550	1" BSP	95		1	NON RETURN
24	RHDl 1 1/4 R	2201541200	400	1.1/4" BSP	110		1	NON RETURN
30	RHDl 1 1/2 R	2201541400	360	1.1/2" BSP	114		1	NON RETURN

DN	Stainless steel		Data				Material	Flow
	Part No	ID Code	W.P.	G	L	Weight	Body	
4	RHDl 1/8 R 316	2202540200	400	1/8" BSP	43	0,079	4	NON RETURN
6	RHDl 1/4 R 316	2202540000	400	1/4" BSP	51	0,085	4	NON RETURN
8	RHDl 3/8 R 316	2202540400	400	3/8" BSP	60	0,163	4	NON RETURN
12	RHDl 1/2 R 316	2202540600	315	1/2" BSP	72	0,357	4	NON RETURN
15	RHDl 3/4 R 316	2202540800	250	3/4" BSP	84	0,674	4	NON RETURN
19	RHDl 1 R 316	2202541000	250	1" BSP	95	0,832	4	NON RETURN
24	RHDl 1 1/4 R 316	2202541200	250	1.1/4" BSP	110	1,596	4	NON RETURN
30	RHDl 1 1/2 R 316	2202541400	250	1.1/2" BSP	114	1,919	4	NON RETURN

DN	Carbon steel		Data				Material	Flow
	Part No	ID Code	W.P.	G	L	Weight	Body	
6	RV 1/8 R	2603520000	500	1/8" BSP	45	0,1	1	NON RETURN
8	RV 1/4 R	2603520100	500	1/4" BSP	55	0,2	1	NON RETURN
10	RV 3/8 R	2603520200	500	3/8" BSP	65	0,4	1	NON RETURN
12	RV 1/2 R	2603520300	500	1/2" BSP	73	0,7	1	NON RETURN
16	RV 3/4 R	2603520400	500	3/4" BSP	88	1,2	1	NON RETURN
20	RV 1 R	2603520500	500	1" BSP	127	2	1	NON RETURN
25	RV 1 1/4 R	2603520600	400	1.1/4" BSP	143	3,3	1	NON RETURN
30	RV 1 1/2 R	2603520700	350	1.1/2" BSP	143	4,2	1	NON RETURN
40	RV 2 R	2603520800	350	2" BSP	165	7,2	1	NON RETURN

DN	Stainless steel		Data				Material	Flow
	Part No	ID Code	W.P.	G	L	Weight	Body	
6	RV 1/8 R 316	2601520000	350	1/8" BSP	45	0,1	4	NON RETURN
8	RV 1/4 R 316	2601520100	350	1/4" BSP	55	0,2	4	NON RETURN
10	RV 3/8 R 316	2601520200	350	3/8" BSP	65	0,4	4	NON RETURN
12	RV 1/2 R 316	2601520300	350	1/2" BSP	73	0,7	4	NON RETURN
16	RV 3/4 R 316	2601520400	350	3/4" BSP	88	1,2	4	NON RETURN
20	RV 1 R 316	2601520500	350	1" BSP	127	2	4	NON RETURN
25	RV 1 1/4 R 316	2601520600	350	1.1/4" BSP	143	3,3	4	NON RETURN
30	RV 1 1/2 R 316	2601520700	350	1.1/2" BSP	143	4,2	4	NON RETURN
40	RV 2 R 316	2601520800	350	2" BSP	165	7,2	4	NON RETURN

RV non-return valve also available with NPT and UN(F) threads. Other materials available on request.