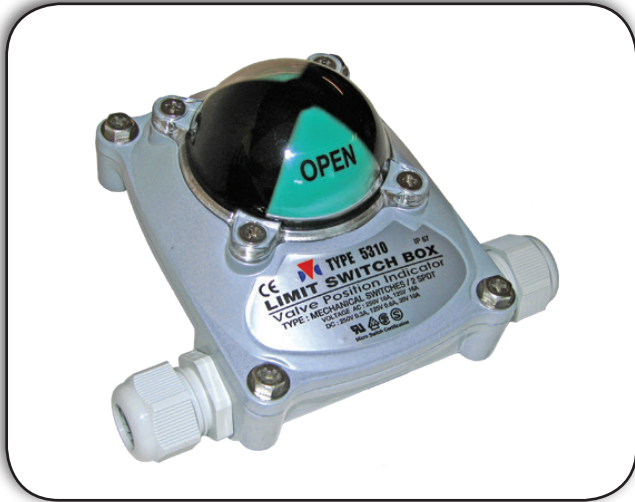
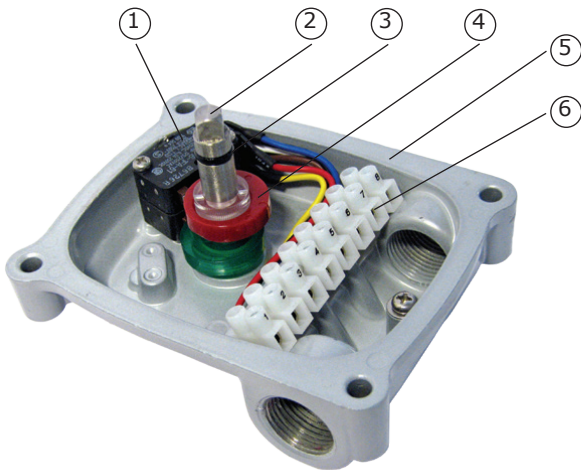


MECHANICAL LIMIT SWITCH

Type 5310



MATERIALS



GENERAL

Contact type:	Mechanical (2 x SPDT)
Voltage:	250V AC/16A 250V DC/ 0.3A 125V AC/16A 125V DC/0,6 A 30V DC/10A
Cable connection:	2 x M20
Temperature:	-20°C. to 80°C.
Indicator:	Polycarbonat
Body:	Die-cast aluminium
Axle height:	17 mm.
Tightness class:	IP 67 / NEMA4 & 4X
Mounting bracket:	VDI / VDE 30 x 80, H=20

OPTIONS

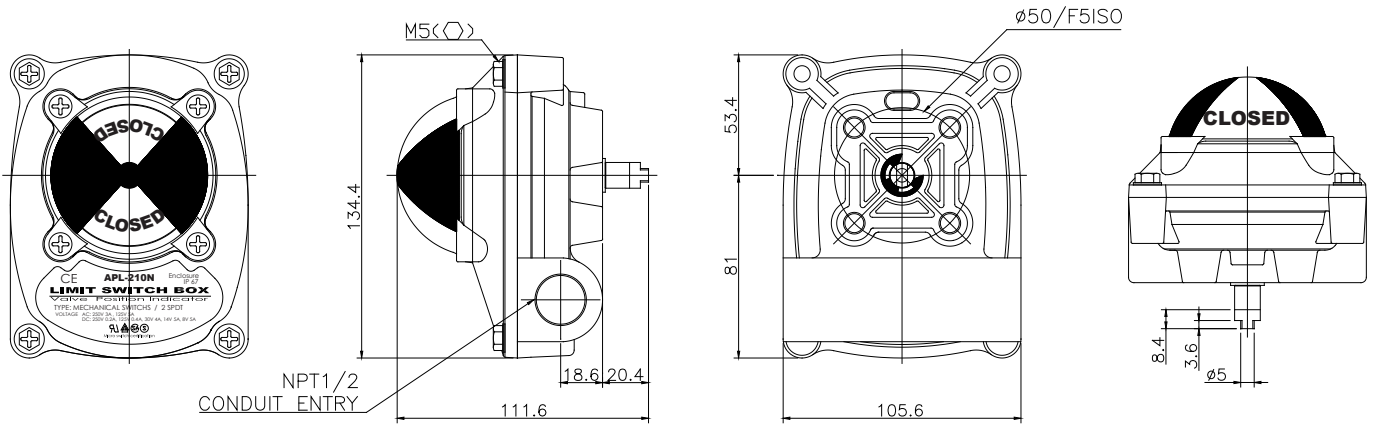
Cable connection:	1/2" NPT, PG13.5, PF 1/2"
Mounting bracket:	VDI / VDE 30 x 80, H=30 mm. VDI / VDE 30 x 130, H=30/50 mm.
Indicator:	3-way
Switch:	Inductive proximity sensor

NO.	DESCRIPTION	MATERIAL
1	SWITCH	2-SPDT
2	AXLE	STAINLESS STEEL
3	O-RING	NBR
4	CAM	POLYCARBONATE
5	BODY	ALUMINIUM DIE-CAST
6	TERMINAL STRIPS	POLYCARBONATE

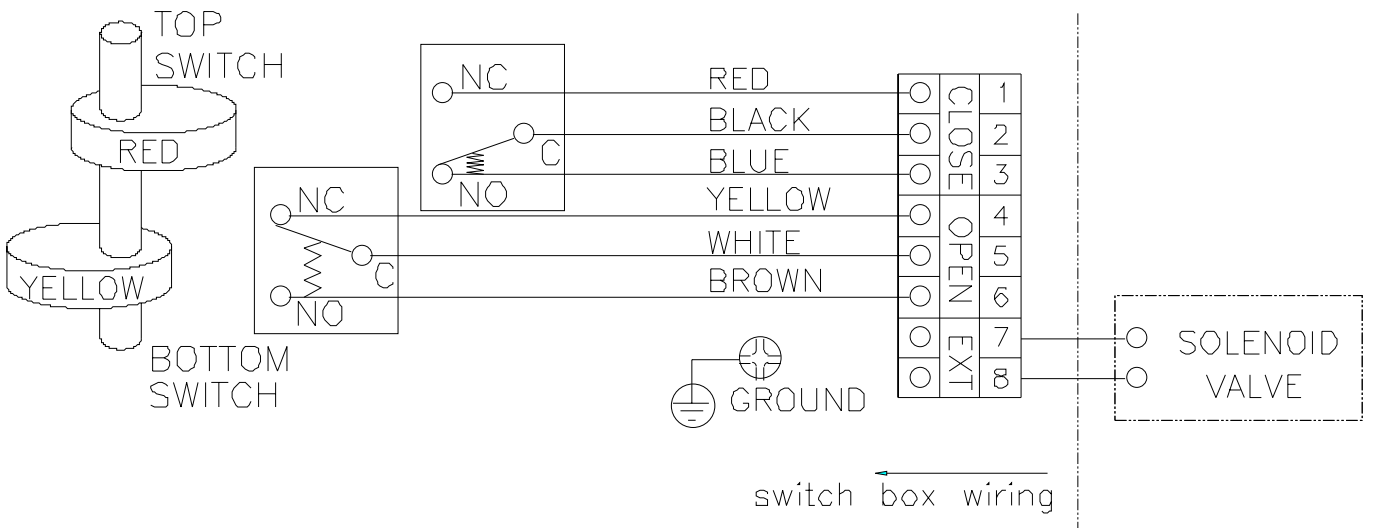
DESCRIPTION

- **Body in corrosion resistant and impact resistant aluminium.** Powder coated.
- **Supplied with standard mounting bracket and cable connection.**
- **Tightness Class IP67** as standard and IP68 as option.
- **Captive Cover Bolts.**
- **Excellent visual indication** of open or closed valve. Can be changed to suite rotation direction.
- **Supplied with mechanical switch set** as standard. Can be supplied with inductive sensors PNP / NPN with various voltages.
- **Quick set spring loaded cam.**

SIZE



ELECTRICAL DIAGRAM



Note: The switch for the closed position is shown in actuated mode - both switches are NC type.