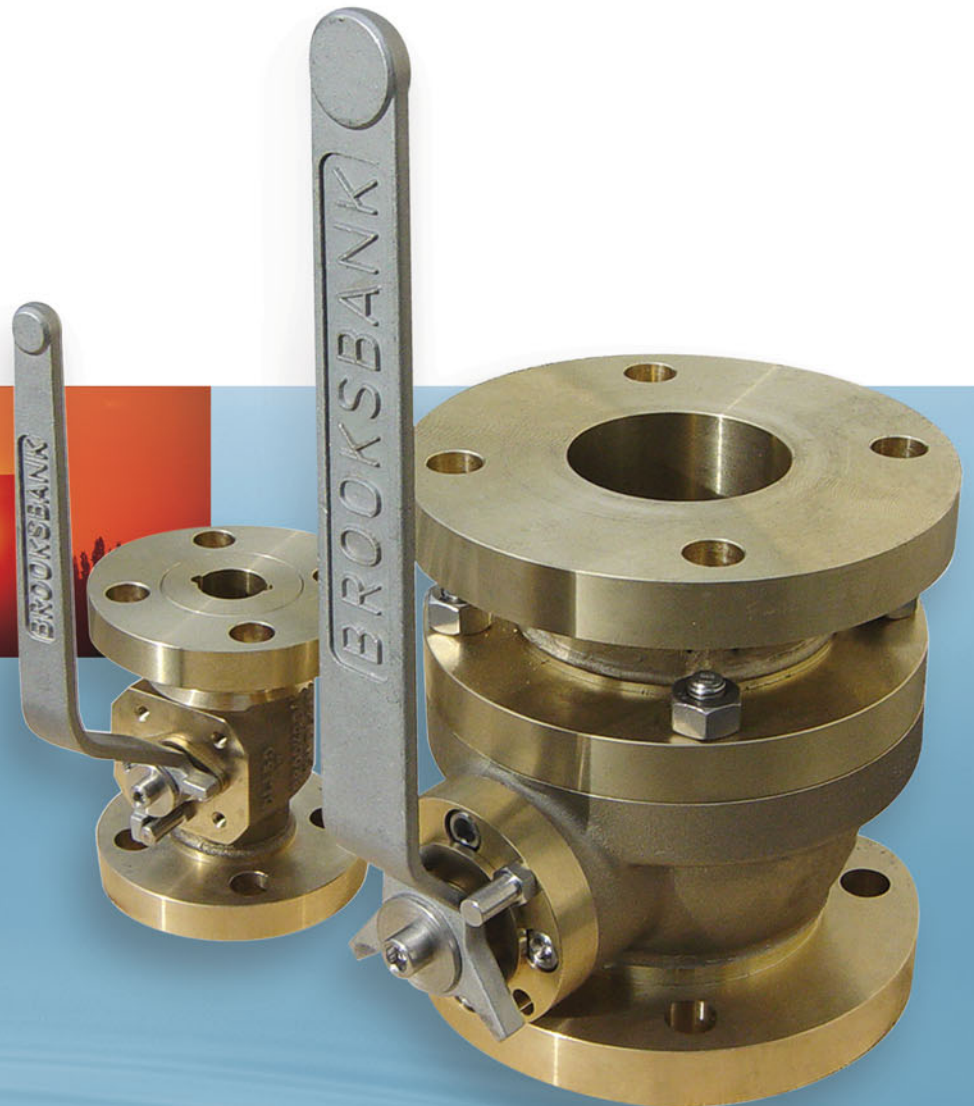




# FULL BORE Ball Valves



**in aluminium bronze and exotic alloys**

## FULL BORE Ball Valves

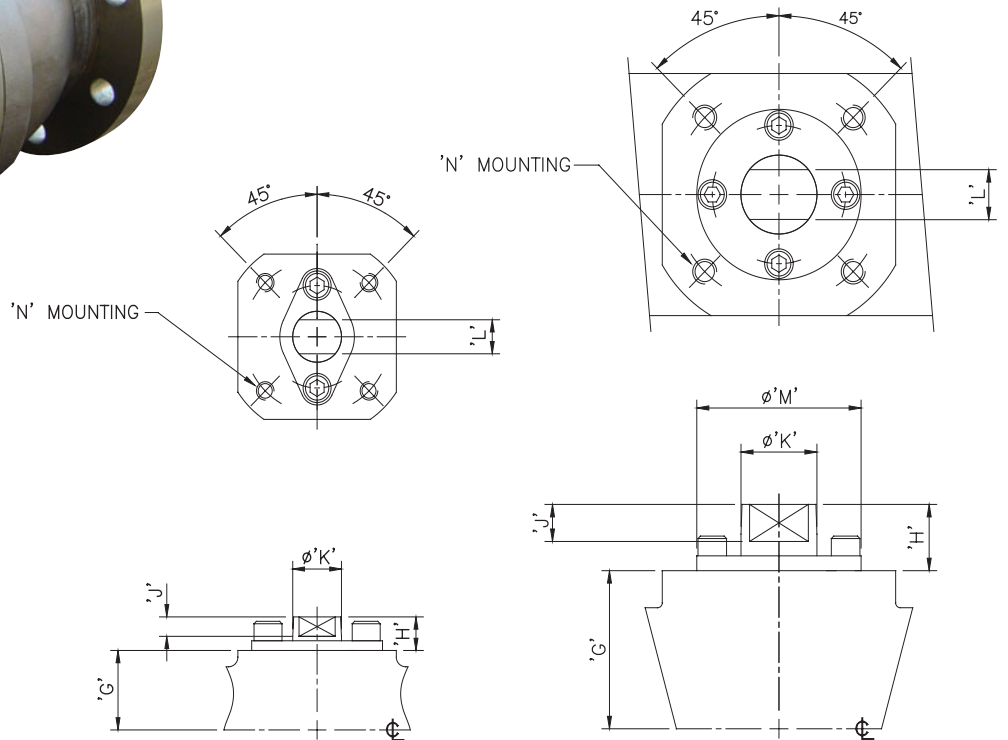
The Brooksbank range of full bore ball valves has been developed specifically to meet the requirements of today's demanding environments.



# FULL BORE Ball Valves



Full bore ball valves offer minimal pressure drop & are the prime choice where pigging of process lines is a major consideration. Brooksbank full bore floating ball valves are available in weight saving single piece end entry design up to 1" & as a split 2 piece body in sizes 1 1/2" & above.



2 BOLT GLAND SHOWING MOUNTING DETAILS

MULTI BOLT GLAND SHOWING MOUNTING DETAILS

## Quality And Performance

Our own exacting quality control system is fully supported by BS EN ISO 9001:2000 accreditation and we are audited at regular intervals by Lloyds Register.

We are rightly proud of our long and successful association with the Defence Industry, built on consistently supplying the right product at the right price and at the right time. Our reputation in these three areas, along with high product quality remains the foundation on which our business is built.



0038



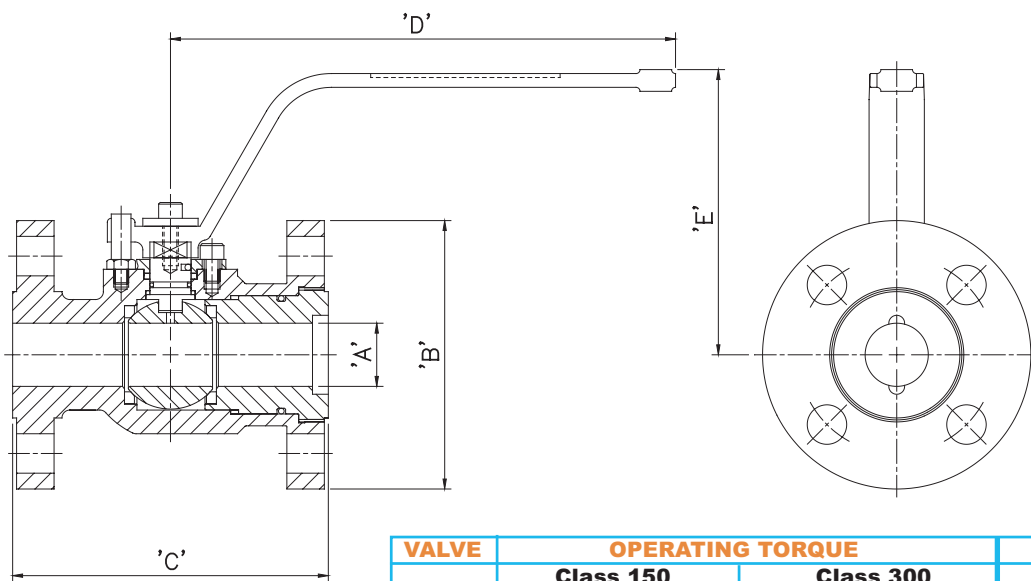
1 0 0 4 2 0 3 7



LRQ 0962445

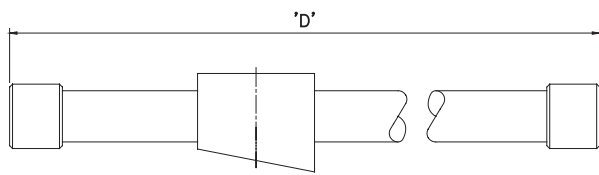
## ACTUATOR MOUNTING: FULL BORE END ENTRY / 2 PIECE

DIMN	GLAND	CLASS	G	H	J	K	L	M	N	No of Holes	Tapping	PCD
1/2"	2 BOLT	150	1 1/32"	7/16"	1/4"	21/32"	7/16"	n/a	F04	4	M6	42mm
1/2"	2 BOLT	300	1 1/32"	7/16"	1/4"	21/32"	7/16"	n/a	F04	4	M6	50mm
3/4"	2 BOLT	150/300	1 1/8"	7/16"	1/4"	21/32"	7/16"	n/a	F04	4	M6	50mm
1"	2 BOLT	150/300	1 3/8"	7/16"	1/4"	21/32"	7/16"	n/a	F05	4	M6	50mm
1 1/2"	MULTI	150/300	2 23/32"	27/32"	15/32"	1"	5/8"	2 5/32"	F07	4	M8	70mm
2"	MULTI	150/300	3 3/4"	13/16"	11/32"	1 3/32"	7/8"	2 5/32"	F07	4	M8	70mm
3"	MULTI	150	4 13/32"	13/16"	11/32"	1 3/32"	7/8"	2 5/32"	F07	4	M8	70mm
3"	MULTI	300	5 1/4"	1 3/16"	1/2"	1 1/2"	1 1/8"	3 1/8"	F10	4	M10	102mm
4"	MULTI	150/300	6"	1 3/16"	1/2"	1 1/2"	1 1/8"	3 1/8"	F10	4	M10	102mm
6"	MULTI	150	8 1/16"	1 9/16"	3/4"	2"	1 1/2"	3 13/16"	F12	4	M12	125mm
6"	MULTI	300	8 3/32"	1 27/32"	1"	2 3/8"	1 7/8"	4 11/32"	F14	4	M16	140mm
8"	MULTI	150/300	9 3/4"	1 27/32"	1"	2 3/8"	1 7/8"	4 11/32"	F14	4	M16	140mm

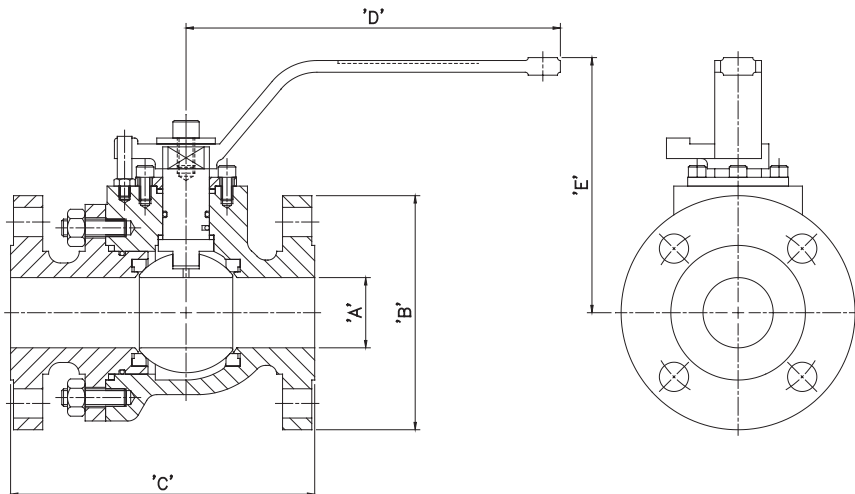


VALVE SIZE	OPERATING TORQUE				STEM YIELD TORQUES			
	Class 150		Class 300		Class 150		Class 300	
	lbf.ft	Nm	lbf.ft	Nm	lbf.ft	Nm	lbf.ft	Nm
1/2"	5	7	8	11	84	113	84	113
3/4"	7	9	10	13	84	113	84	113
1"	8	11	12	16	84	113	84	113
1 1/2"	15	20	19	26	284	383	284	383
2"	30	41	39	53	546	737	546	737
3"	65	88	86	116	546	737	1278	1725
4"	120	162	180	243	1278	1725	1278	1725
6"	350	473	500	675	5152	6255	8655	11684
8"	600	810	900	1215	8655	11684	8655	11684

OVERALL DIMENSIONS	SIZE	CLASS	'A'	'B'	'C'	'D'	'E'
	1/2"	150	1/2"	3 1/2"	4 1/4"	8"	4 3/16"
	1/2"	300	1/2"	3 3/4"	5 1/2"	8"	4 3/16"
	3/4"	150	3/4"	3 7/8"	4 5/8"	8"	4 5/16"
	3/4"	300	3/4"	4 5/8"	6"	8"	4 5/16"
	1"	150	1"	4 1/4"	5"	8"	4 17/32"
	1"	300	1"	4 7/8"	6 11/2"	8"	4 17/32"
	1 1/2"	150	1 1/2"	5"	6 1/2"	8"	5 7/16"
	1 1/2"	300	1 1/2"	6 1/8"	7 1/2"	8"	5 7/16"
	2"	150	2"	6"	7"	12"	5 7/8"
	2"	300	2"	6 1/2"	8 1/2"	12"	5 7/8"
	3"	150	3"	7 1/2"	8"	12"	6 17/32"
	3"	300	3"	8 1/4"	11 1/8"	24"	8 29/32"
	4"	150	4"	9"	9"	24"	9 21/32"
4"	300	4"	10"	12"		GEARBOX	
6"	150	6"	11"	15 1/2"		GEARBOX	
6"	300	6"	12 1/2"	15 7/8"		GEARBOX	
8"	150	8"	13 1/2"	18"		GEARBOX	
8"	300	8"	15"	19 3/4"		GEARBOX	



3" CLASS 300 & 4" CLASS 150



**STEM YIELD TORQUES** based on commercial spec. NI.AL.BR (EN 12163 CW307G R680). These figures are for clean water at full design pressure, with valves fitted with virgin PTFE seats. Operation at least once each day. These figures do not include any safety factors. Please refer to Brooksbank Valves Ltd. for other conditions.

**Manufactured from a full range of materials including:**

- Aluminium Bronze - European & American Specs.
- Gunmetal - European & American Specs.
- Duplex
- Super Duplex
- Titanium
- Hastelloy®
- Monel
- 254 SMO
- Other materials available on request

**Features include:**

- Anti static, anti blowout stem
- Cavity pressure relieving seats
- Pressure equalising ball design
- Solid ball
- Single Piece End Entry in sizes 1" & below
- Bolted body on sizes 1 1/2" & above
- ISO 5211 mounting platform
- Removal of lever for actuation does not compromise seal integrity
- Chevron packing on sizes 2" & above
- Other flange standards on request

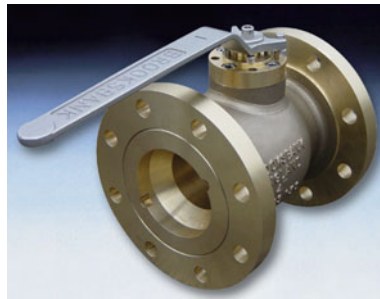
**Manufacturing Standards**

- Designed generally in accordance with API 6D & EN 17292 (Formerly BS5351)
- Wall thickness in accordance with ANSI B16.34
- Face to face dimensions in accordance with ANSI B16.10
- Flange dimensions in accordance with ANSI B16.5
- Bronze material in accordance with ANSI B16.24

other available products



**Three Piece  
Ball Valve**



**Single Piece End Entry  
Ball Valve**



**Series 1500 High Pressure  
Ball Valve**



**Full Bore  
Ball Valve**



**Wafer  
Ball Valve**



**Multiport  
Ball Valve**



**3 Way  
Plug Valve**



**Hydrant  
Ball Valve**



**Non Return  
Stop Valve**



**Hydrant  
Plug Valve**



**Top Entry  
Plug Valve**



**Top Entry  
Ball Valve**

for detailed information on our entire product range please contact us on the numbers below or visit our website:

**[www.brooksbank.co.uk](http://www.brooksbank.co.uk)**

**BROOKS BANK**  
VALVES LTD



0038

**Brooksbank Valves Limited** • Sackville Street

Skipton • North Yorkshire • BD23 2PS • United Kingdom

**Tel:** +44 (0)1756 792346 • **Fax:** +44 (0)1756 792347

**email:** [sales@brooksbank.co.uk](mailto:sales@brooksbank.co.uk) • [www.brooksbank.co.uk](http://www.brooksbank.co.uk)



#### **PRESSURE EQUIPMENT DIRECTIVE**

Brooksbank Valves have been granted an EC certificate of conformity in accordance with the requirements of the Pressure Equipment Directive 97/23/EC.

The Company's quality management system has been assessed against the requirements of Annex III, Module H of the Directive, allowing Brooksbank Valves products to be CE marked where appropriate.