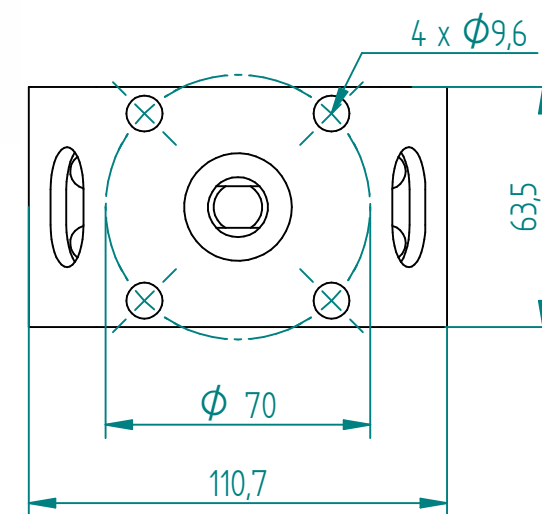
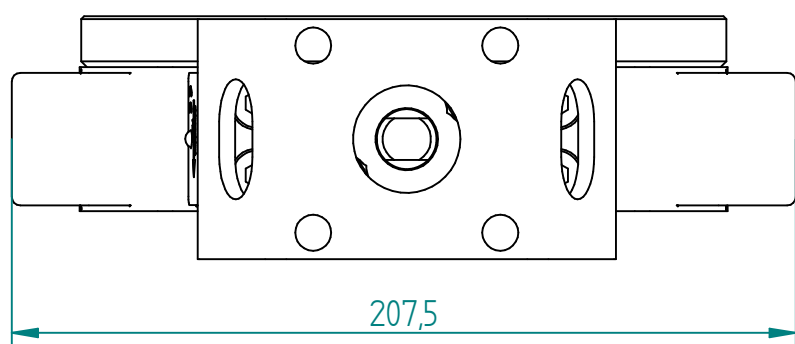


No.	Part Name	Material	Qty.
1	Body	Nickel Aluminum Bronze	1
2	Disc	Nickel Aluminum Bronze	1
3	Stem	Monel, K500	1
4	Seat	RTFE / Inconel	1



1:2 Mounting Plate



DRAWN	NAME	DATE	SIZE	DWG NO	
				MOTO	05.08.2014
CHECKED	TOCO	dd.mm.yyyy	FILE NAME: BRAS41A25100.dft		
ENG APPR	TOCO	dd.mm.yyyy	SCALE: 1:2	REV:	
MGR APPR	TOCO	dd.mm.yyyy	WEIGHT: 10,00 kg	SHEET: 1 OF 1	

UNLESS OTHERWISE SPECIFIED DIMENSIONS ARE IN MILLIMETERS AND TOLERANCES ARE +/-0,5

TITLE BUTTERFLY VALVE BRAY S41/A25 DOUBLE ECCENTRIC LUG 4" ANSI 150

REV	DESCRIPTION	DATE	APPROVED
REVISION HISTORY			