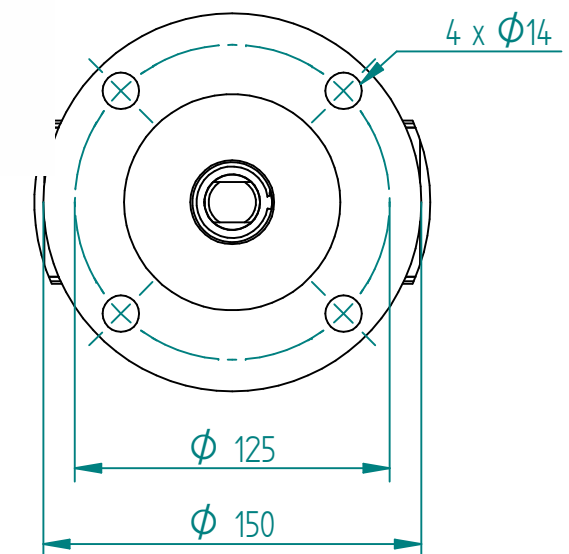
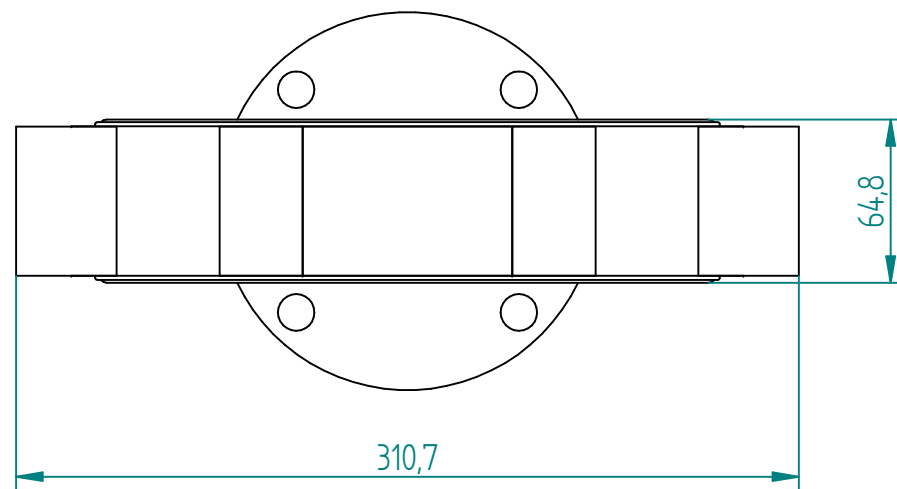
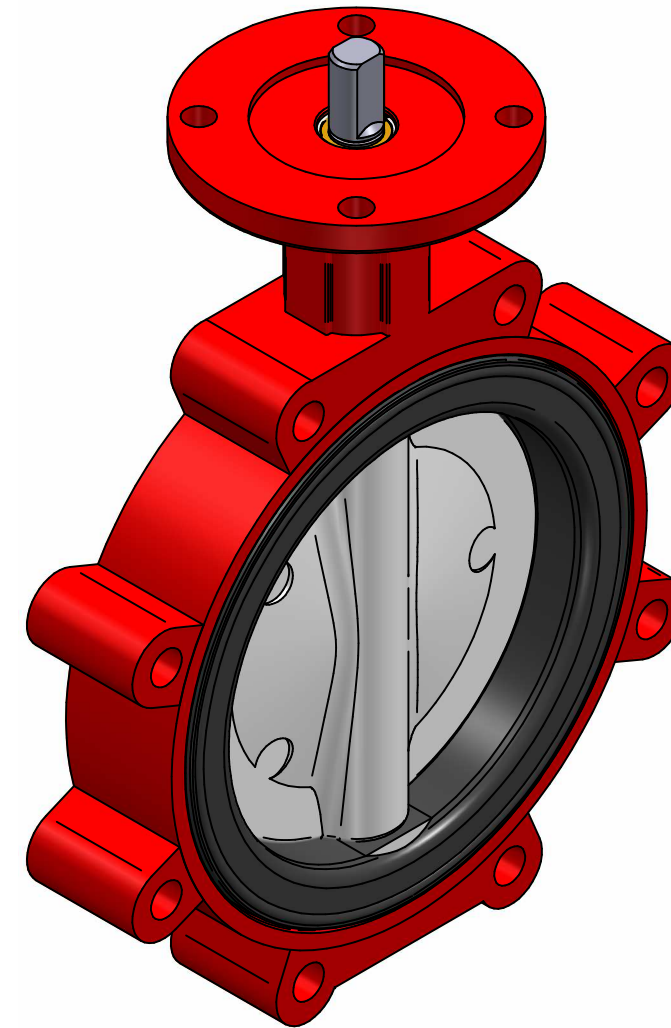
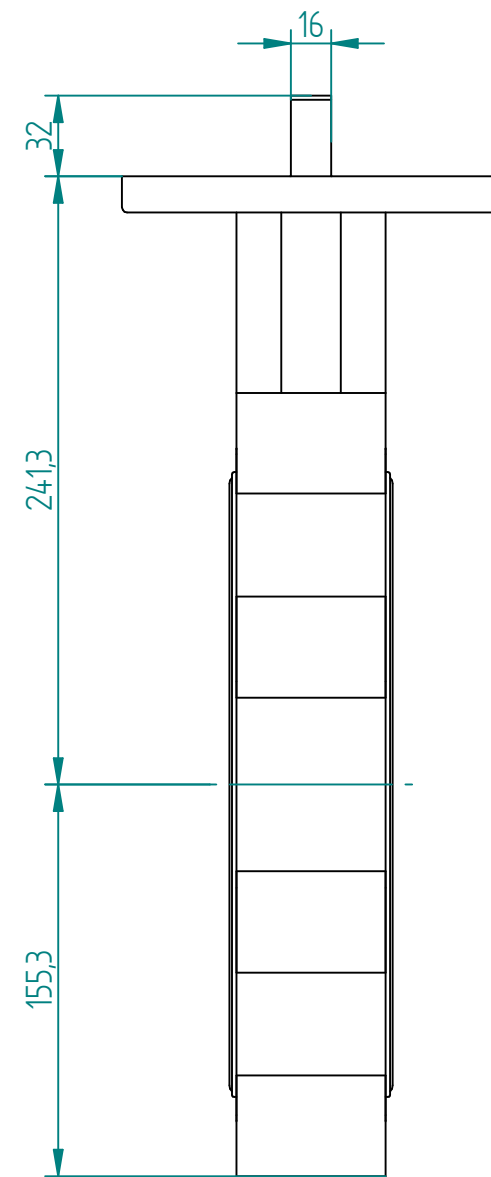
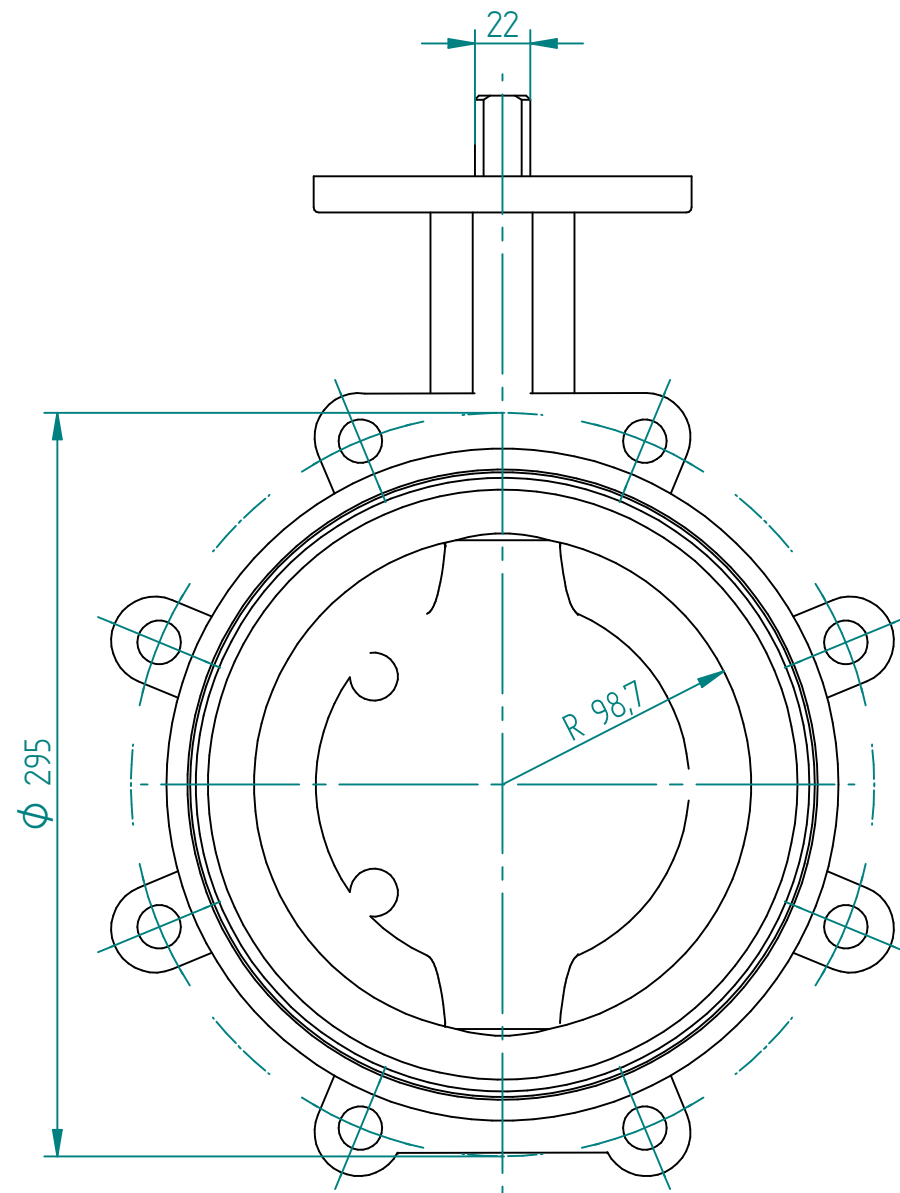


No.	Part Name	Material	Qty.
1	Body	Ductile Iron	1
2	Disc	Nylon 11 Coated Ductile Iron	1
3	Stem	416 Stainless Steel	1
4	Seat	FKM (Viton)	1



		NAME	DATE	SIZE	DWG NO
DRAWN	MOTO	27.03.2018	A3	BRA80819	
CHECKED	TOCO	27.03.2018	FILE NAME: BRA80819.dft		
ENG APPR	TOCO	27.03.2018	SCALE: 1:3	REV:	
MGR APPR	TOCO	27.03.2018	WEIGHT: 19,00 kg	SHEET: 1 OF 1	

UNLESS OTHERWISE SPECIFIED DIMENSIONS ARE IN MILLIMETERS AND TOLERANCES ARE +/-0,5

REV	DESCRIPTION	DATE	APPROVED
REVISION HISTORY			

TITLE BUTTERFLY VALVE BRAY S31/3G9 COCENTRIC LUG 8" PN10