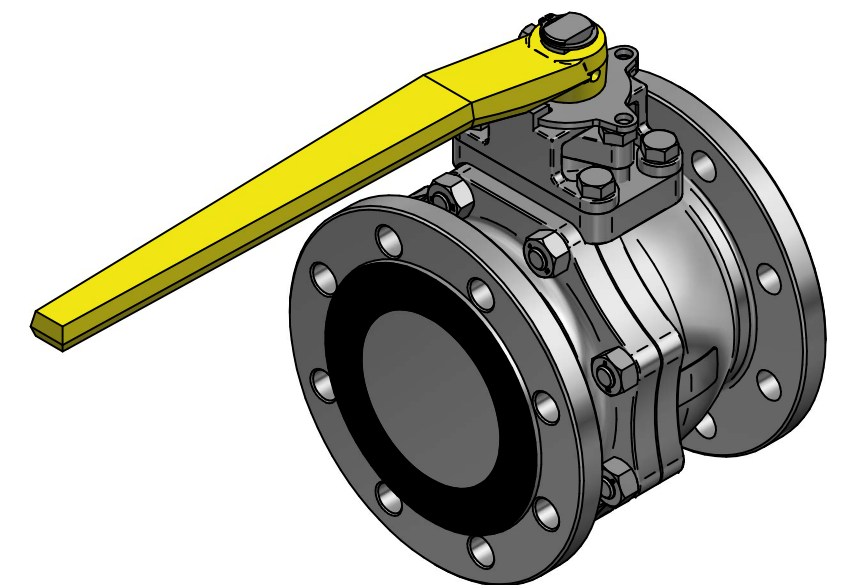


DETAIL A



Part name	Material
Body	EN 1.0619
Seat	TFM 1600
Ball	EN 1.4401
Body Stud	Alloy Steel
Body Nut	Alloy Steel
Stem	EN 1.4401
Thrust Washer Protector	PEEK
Thrust Washer	Tek-Fil
Stem Bearing	15% RPTFE
Stem Packing	Graphite
Packing Protector	PEEK
Packing Gland	EN 1.4301 / SS304
Packing Follower	EN 1.0619
Gland Bolt	Ally Steel
Travel Stop Housing	EN 1.0619
Housing Bolt	Alloy Steel
Travel Stop Plate	Zinc Plated Carbon Steel
Snap Ring	Dacromet Plated Carbon Steel
Handle	Ductile Iron
Handle Bolt	Carbon Steel

Weldable Cast B-grade Steel with Lever DN65-DN300

KV	Torque
1817	170 nm



TITLE BALL VALVE FIG 15 FS FLANGE DN100, PN16 2 PICE
FB FIRESAFE, W/LEVER WCB/TFM 1600

	NAME	DATE	SIZE	DWG NO
DRAWN	EMLA	31.08.2024	A3	BRA00009F
CHECKED	EMLA	31.08.2024	FILE NAME: BRA00009F.dft	
ENG APPR	TOCO	dd.mm.yyyy	SCALE: 1:4	REV: 00
MGR APPR	TOCO	dd.mm.yyyy	WEIGHT: 24 kg	SHEET: 1 OF 1

UNLESS OTHERWISE SPECIFIED DIMENSIONS ARE IN MILLIMETERS AND TOLERANCES ARE +/-0,5

REV	DESCRIPTION	DATE	APPROVED
01	ADDED LEVER	28.08.2024	EMLA
00	ISSUED	12.07.2024	EMLA
REVISION HISTORY			