

**PRESSURE REDUCING VALVE
DIRECT ACTING
PRV25/2SS – Stainless steel (barstock)**

DESCRIPTION

The ADCA PRV25/2SS series direct acting pressure reducing valves are designed for use on steam, compressed air and other gases.

They are suitable for reducing steam pressure at the point of use on laundry machines, dyeing, food industries, sterilizers, etc.

Connections are female screwed or flanged.

MAIN FEATURES

Compact design.

Bellows specially designed for high durability.

Built-in strainer.



OPTIONS: Regulating screw with top cap.

USE: Saturated steam, compressed air and other gases compatible with the construction.

AVAILABLE MODELS:
 PRV25/2SS – metal to metal seating
 PRV25/2SSG – soft valve
 PRW25/2SS – soft valve balanced

RECOMMENDED APPLICATIONS :
 PRV25/2SS – steam and compressed air
 PRV25/2SSG – steam and compressed air where tight off is required
 PRW25/2SS – water, compressed air

SIZES: ½", ¾", 1"; DN15, DN 20 and DN 25.

CONNECTIONS: Female screwed ISO7/1Rp(BS 21) .
 Flanged EN 1092-1 PN40 or ANSI.

INSTALLATION: Horizontal installation.
 An "Y" strainer should be provided upstream the valve.
 See IMI, installation and maintenance instructions.

CE MARKING (PED - European Directive 97/23/EC)	
PN 25	Category
DN 15 to 25	SEP - art. 3, paragraph3

LIMITING CONDITIONS			
	PRV25/2SS	PRV25/2SSG	PRW25/2SS
Body design conditions	PN25	PN25	PN25
Max.upstream pressure	17 bar	17 bar	14 bar
Max.downstream pressure	8,6 bar	8,6 bar	8,6 bar
Min.downstream pressure	0,14 bar	0,14 bar	0,35 bar
Max.design temperature	210°C	180°C	75°C
Max.cold hydraulic test	38 bar	38 bar	38 bar
Max.reducing ratio	10:1	10:1	10:1

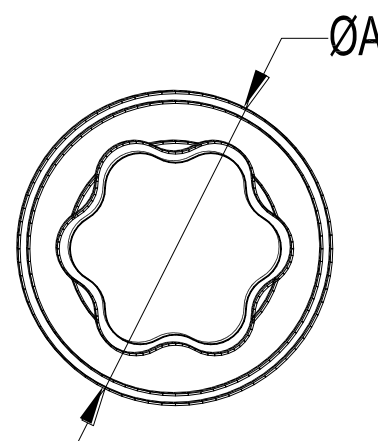
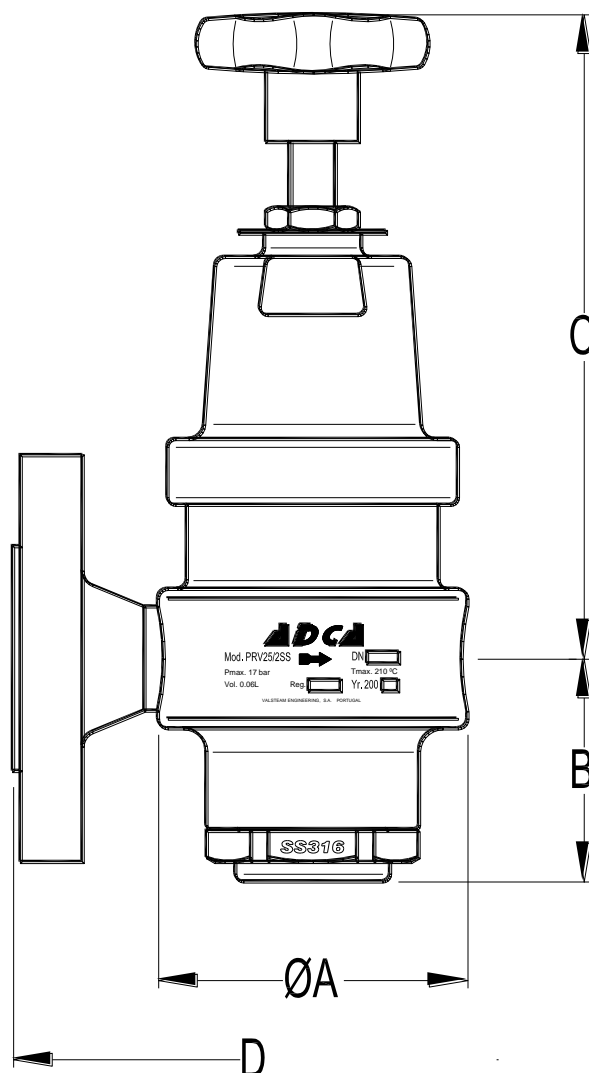
CAPACITIES (See selection table)			
Valve Size	15	20	25
KVs	1,7	2,6	3,1

PRESSURE RANGES				
Spring colour	Blue *	Yellow **	Green	Red
Red.Press. bar	0,35 - 1,7	0,14 - 1,7	1,4 - 4,0	3,5 - 8,6

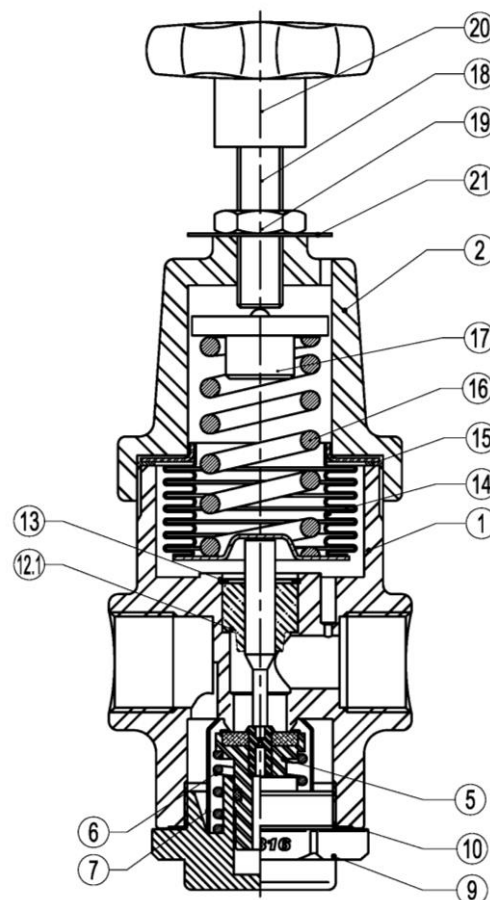
*Applicable only on the PRW ; ** Appl.only on the PRV

Where control spring ranges overlap,always use the lower range to give better control and precision.

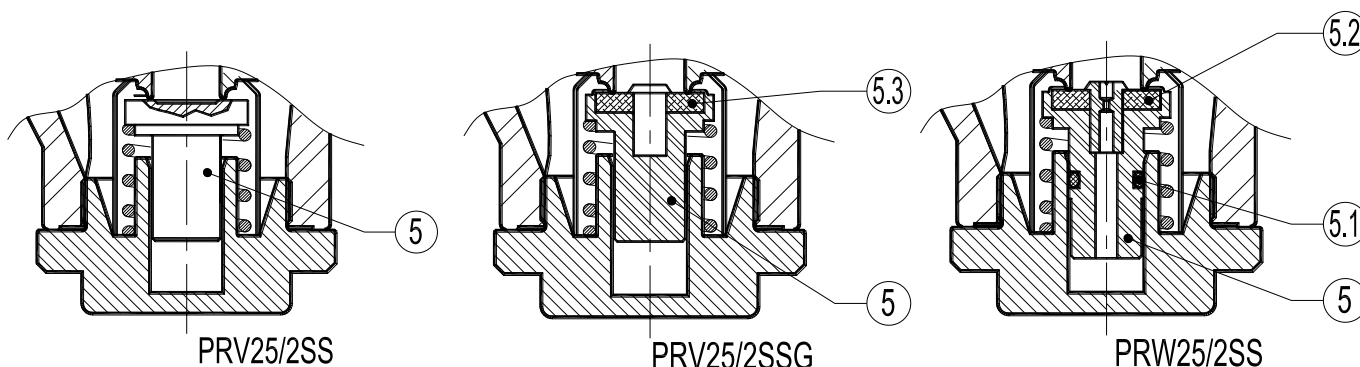
DIMENSIONS (mm)-Screwed				EN1092-1 Flanges			
SIZE DN	A	B	C	WGT. Kgs	D	E	WGT. Kgs
1/2"	80	57	188	3,2	130	47,5	4,6
3/4"	80	57	188	3,2	150	52,5	5,2
1"	90	60	198	3,7	160	57,5	6



MATERIALS		
POS.	DESIGNATION	MATERIAL
1	VALVE BODY	AISI 316 / 1.4401
2	COVER	AISI 316 / 1.4401
3	SEAT	AISI 316 (INTEGRAL)
4	-	-
5	*VALVE	HARDENED ST. STEEL
5.1	*O-RING	NBR
5.2	VALVE HEAD	NBR
5.3	*VALVE HEAD	PTFE/GRAPHITE
6	*VALVE RETURN SPRING	AISI 302 / 1.4300
7	*STRAINER SCREEN	AISI 304 / 1.4301
8	PUSHROD	AISI 316 / 1.4401
9	BOTTOM CAP	CF8M / 1.4408
10	*CAP GASKET	PTFE
11	-	-
12	-	-
12.1	*GUIDE BUSH	AISI 316 / 1.4401
13	*STOP RING	AISI 304 / 1.4301
14	*BELLOWS	AISI 316 TI / 1.4571
15	*BELLOWS GASKET	PTFE
16	*ADJUSTMENT SPRING	STEEL
17	TOP SPRING PLATE	BRASS
18	ADJUSTMENT SCREW	AISI 304 / 1.4301
19	LOCKNUT	AISI 304 / 1.4301
20	HANDWHEEL	PLASTIC
21	SPRING IDENT. PLATE	ALUMINIUM



* Available spare parts.





STEAM CAPACITY TABLE (Kg/h)					COMPRESSED AIR CAPACITY TABLE (Nm3/h-0°C-1,013bar)					WATER CAPACITY TABLE (m3/h)				
INLET bar	OUTLET bar	SAT. STEAM			INLET bar	OUTLET bar	COMPRESSED AIR			D.P. bar	WATER			
		DN15	DN20	DN25			DN15	DN20	DN25		DN15	DN20	DN25	
2	0,2	33	53	64	2	0,2	45	72	86	1,5	2,1	3,18	3,8	
	1,2	57	87	104		1,2	77	117	140					
	1,6	38	59	71		1,6	51	80	96					
3	0,3	45	70	83	3	0,3	61	95	112					2
	1,2	76	116	138		1,2	103	157	186					
	2,2	61	93	111		2,2	82	126	150					
4	2,6	46	70	83	4	2,6	62	95	112	3	2,95	4,5	5,37	
	0,4	56	87	104		4	0,4	76	117					140
	1	66	102	121			1	89	138					163
2,5	95	145	173	2,5	128		196	234						
5	3,5	57	87	104	5	3,5	77	117	140	4	3,4	5,2	6,2	
	0,5	68	105	125		5	0,5	92	142					169
	2	91	139	166			2	123	188					224
3	114	174	208	3	154		235	281						
6	4	85	130	155	6	4	115	176	209	5	3,8	5,8	6,93	
	0,6	79	122	145		6	0,6	107	165					196
	2	106	162	194			2	143	219					262
3	133	203	243	3	180		274	328						
7	4	120	184	219	7	4	162	248	296	6	4,16	6,36	7,6	
	0,7	91	139	167		7	0,7	123	188					225
	2	121	185	222			2	163	250					300
3,5	152	232	277	3,5	205		313	374						
8	5	132	201	240	8	5	178	271	324	7	4,8	7,35	8,75	
	0,8	102	157	187		8	0,8	138	212					252
	2	137	210	250			2	185	284					338
3,5	171	262	312	3,5	231		354	421						
9	5	161	247	294	9	5	217	333	397	8	5,8	9	10,7	
	6	142	217	259		9	6	192	293					350
	0,9	114	174	208			9	0,9	154					235
2,5	133	203	242	2,5	180			274	327					
4	152	233	277	4	205	315		374						
10	5	190	291	347	10	5	257	393	468	10	1,5	2,1	3,18	
	7	152	232	277		10	7	205	313					374
	1	125	192	228			10	1	169					259
3	146	224	266	10	3			197	302					359
4	167	256	305		10	4		225	346	412				
6	209	320	381			10	6	282	432	514				
8	161	247	294	10			8	217	333	397				
11	8,6	182	279		331		11	8,6	246	377	447	11	1,1	1,84
	1,1	136	210		249	11		1,1	184	284	336			
	3	182	280	333	11			3	246	378	450			
6	228	350	416	11			6	308	473	562				
8	198	302	360			11	8	267	408	486				
8,6	182	279	331		11		8,6	246	377	447				
12	1,2	148	227	270			12	1,2	200	306	365	12	1,2	1,48
	3	197	302	360		12		3	266	408	486			
	6	247	378	451	12			6	333	510	609			
8	228	349	416	12			8	308	471	562				
8,6	217	332	396			12	8,6	293	448	535				
13	1,3	159	244		291		13	1,3	215	329	393	13	1,3	1,59
	4	186	284	340	13			4	251	383	459			
	6	212	325	388		13		6	286	439	524			
7	266	407	486	13			7	359	549	656				
8,6	246	378	451		13		8,6	332	510	609				
15	1,5	182	259			321	15	1,5	246	350	433	15	1,5	2,12
	4	212	302	374		15		4	286	408	505			
	6	243	345	427	15			6	328	466	576			
8	304	433	536	15			8	410	585	724				
8,6	298	426	512			15	8,6	402	575	691				
17	1,7	205	279		333		17	1,7	277	377	450	17	1,7	2,05
	4	238	325	386	17			4	321	439	521			
	6	273	372	441		17		6	369	502	595			
8	342	465	555	17			8	462	628	749				
8,6	339	449	541		17		8,6	458	606	730				